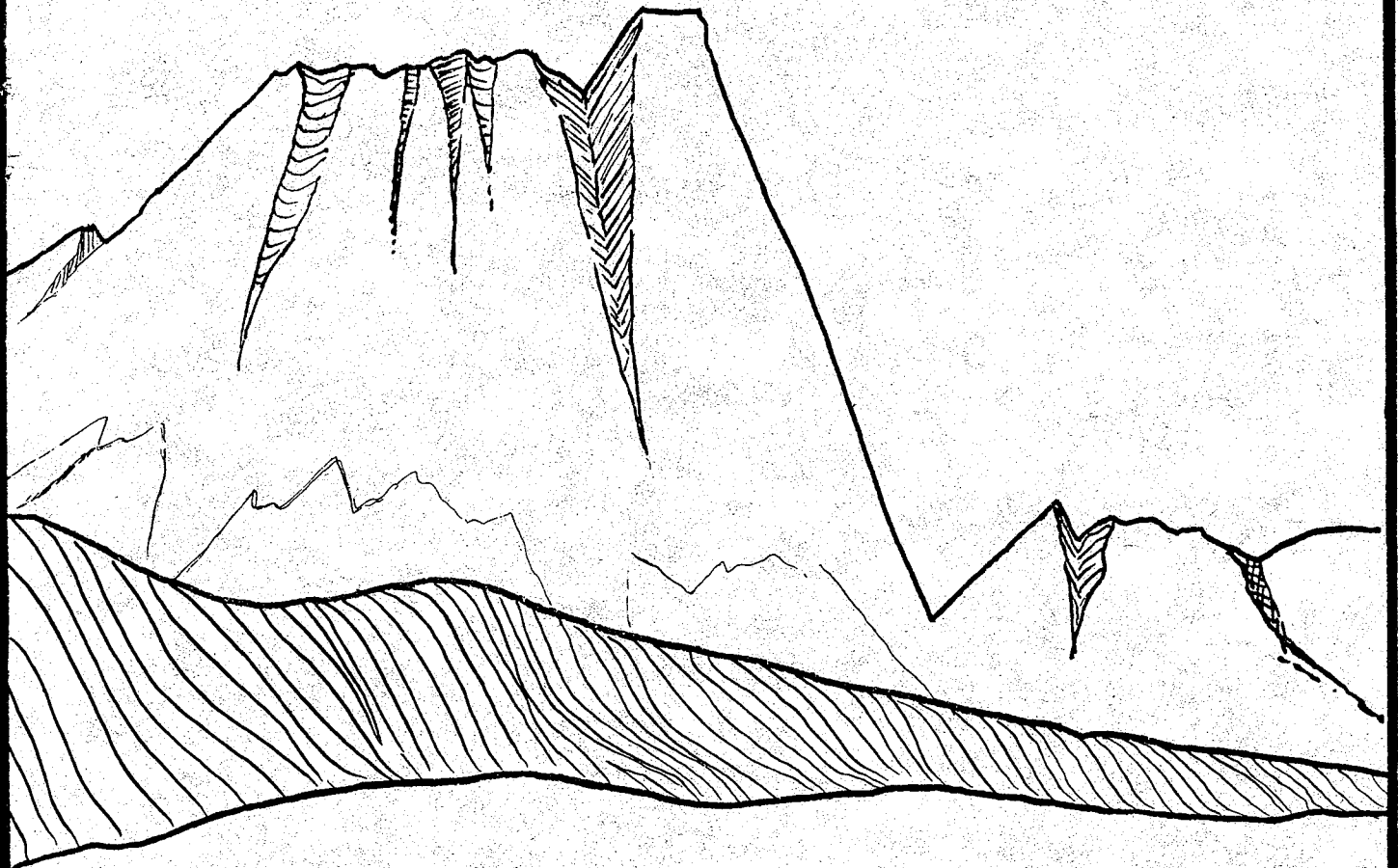


ISSN - 0742 - 5015

# Broken



## Mountains

GENEALOGICAL SOCIETY  
BOX 261, CHESTER, MT

The Tri-County  
Searcher

vol. 1 no. 2

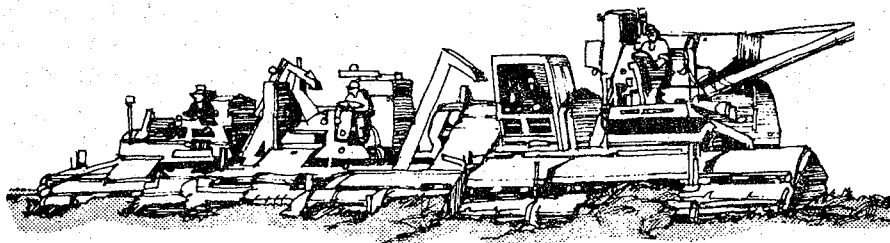
# The Searcher

Published by the Broken Mountains Genealogical Society

SEPTEMBER 1980

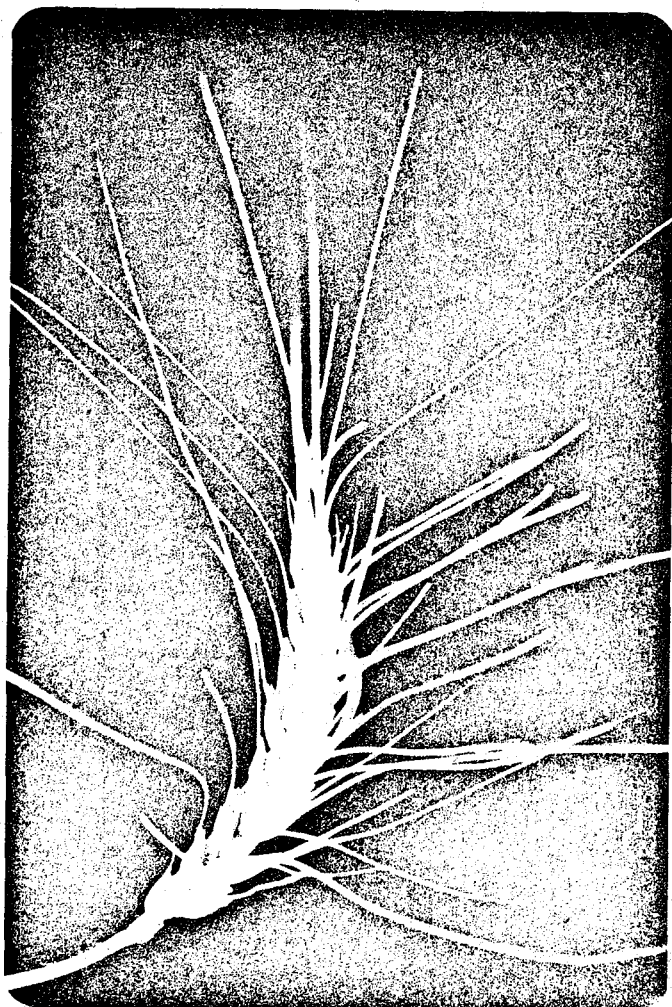
CHESTER, MONTANA

VOLUME 1, NUMBER 2



## TABLE OF CONTENTS

PRESIDENT'S MESSAGE .....	20
CALENDAR OF EVENTS .....	21
BROKEN MOUNTAINS GENEALOGICAL SOCIETY NEWS.....	22
EXCHANGES .....	24
"CHESTER SIGNAL" EXCERPTS .....	25
QUERIES .....	28
JOPLIN CEMETERY RECORDS .....	33
RUDYARD CEMETERY RECORDS .....	41
"ON A GOVERNMENT CLAIM" .....	46



YELLOW GOLD--September in Liberty and Hill Counties means the excitement of harvesting the golden wheat and reaping the rewards of a year's labor. The BMGS hopes to reap some rewards, too, from their quilt raffle at the September Harvest Festival.

PRESIDENT'S MESSAGE

As the new President of the BMGS, I hope to complete some projects that we have started and to initiate some new ones.

The first project that needs completion is compilation of our local cemetery records. The tombstone inscriptions in the Chester Cemetery have been recorded. Now we have to check them to make sure they are right and get them typed so that they can be filed.

Also, we have set aside some money to buy new genealogy books for our library. A committee will be ordering these books and completing this project in the next month.

We plan to have a money making project for September. It will consist of a quilt and gasoline raffle. The winning ticket will be drawn at the Harvest Festival on September 20 in Chester.

The new microfilm reader has arrived this summer. This will make it much easier to read genealogical material. Anyone interested in researching census records should order them from Lilly Eveland at the library in Chester.

I hope to do my best as the new President of the BMGS with the help of every member of our society. I'm confident that we will work together and have a successful and productive year.

I would like to remind everyone of the State Genealogical Seminar and Convention to be held in Great Falls, Montana on October 4. Plan to attend and bring a friend.

I hope this fall and winter will prove to be productive months in the advancement of your genealogical research!

BETTY MARSHALL,

BMGS President

THE SEARCHER is published by the Broken Mountains Genealogical Society, Box 261, Chester, Montana, 59522. The subscription rate is \$2.00 per year. The publication is free to members of the society. Membership is open to anyone interested in genealogy. Annual dues are \$10.00 for singles, \$15.00 per family. Honorary memberships are given to senior citizens.

Queries will be included free of charge to members and those with subscriptions. Others may submit queries at the rate of 5¢ per word. Queries should be addressed to: Linda Fossen, Box 27, Joplin, Montana 59531.

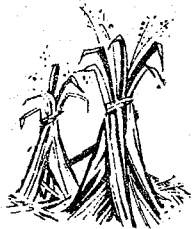


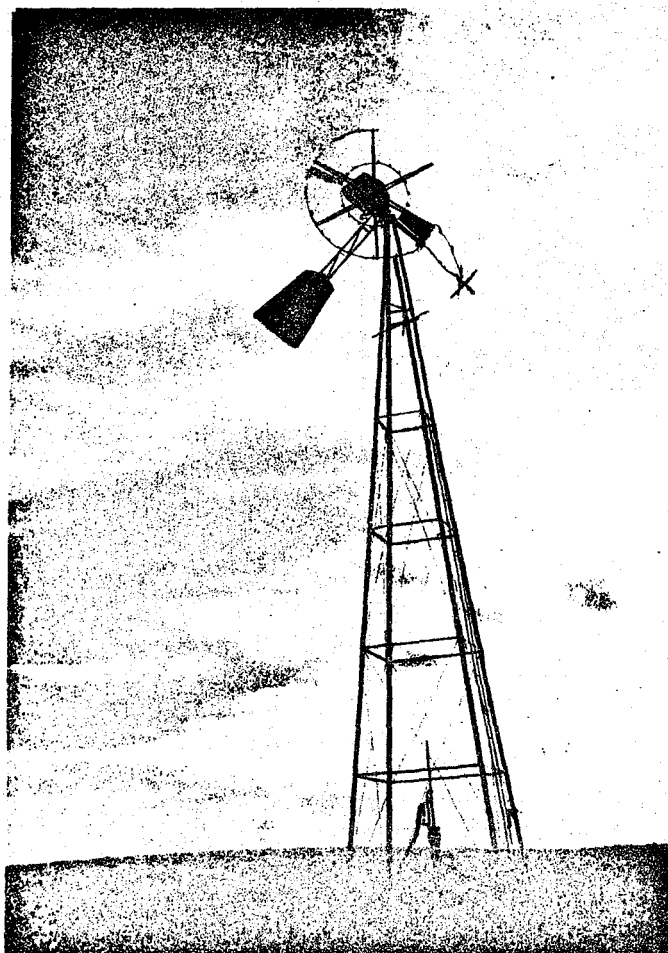
CALENDAR OF EVENTS

<u>DATE</u>	<u>TIME</u>	<u>MEETING</u>
OCTOBER 2	7:30 p.m.	Regular meeting. Program: Mrs. Wells, Shelby, guest speaker. Topic: "Family History and Genealogical Seminar held in Salt Lake City on August 12-15.
NOVEMBER 6	7:30 p.m.	Regular meeting. Program: Frances Hochberger, speaker. Topic: Poland
DECEMBER 4	7:30 p.m.	Regular meeting. Wine and Cheese Tasting Christmas Party.
JANUARY 8	7:30 p.m.	Regular meeting. Program: Helen Ann Aaberg, speaker. Topic: New England
FEBRUARY 5	7:30 p.m.	Regular meeting. Program: Olaf and Madonna Smedsrud, speakers. Topic: Norway

Crown'd with the sickle, and the  
wheaten sheaf,  
While Autumn, nodding o'er the  
yellow plain,  
Comes jovial on.

---JAMES THOMSON





HI-LINE HERITAGE--This windmill, located 26 miles north of Joplin, Montana stands as a reminder of the homestead days in north central Montana. Several speakers have been scheduled to make guest appearances at meetings of the BMGS in the next few months and they will discuss the heritage of several foreign countries.

SPEAKERS SCHEDULED

Don't miss the upcoming meetings of the Broken Mountains Genealogical Society if you are interested in learning more about the geography, history, and people of Poland, Norway, and New England!

At the November 6 meeting Frances Hochberger will present a program on Poland. The January 8 meeting will feature Helen Ann Aaberg discussing her re-

cent trip to New England and on February 5 Olaf and Madonna Smedsrud will speak about their journey to Norway. These meetings should be a great asset to anyone attempting genealogical research in these areas. Mark these dates down on your calendars now and plan to attend.

\*\*\*\*\*

GENEALOGY CONFERENCES COMING UP

Two genealogy conferences have been scheduled this fall to aid Montana searchers in their efforts to find their "roots".

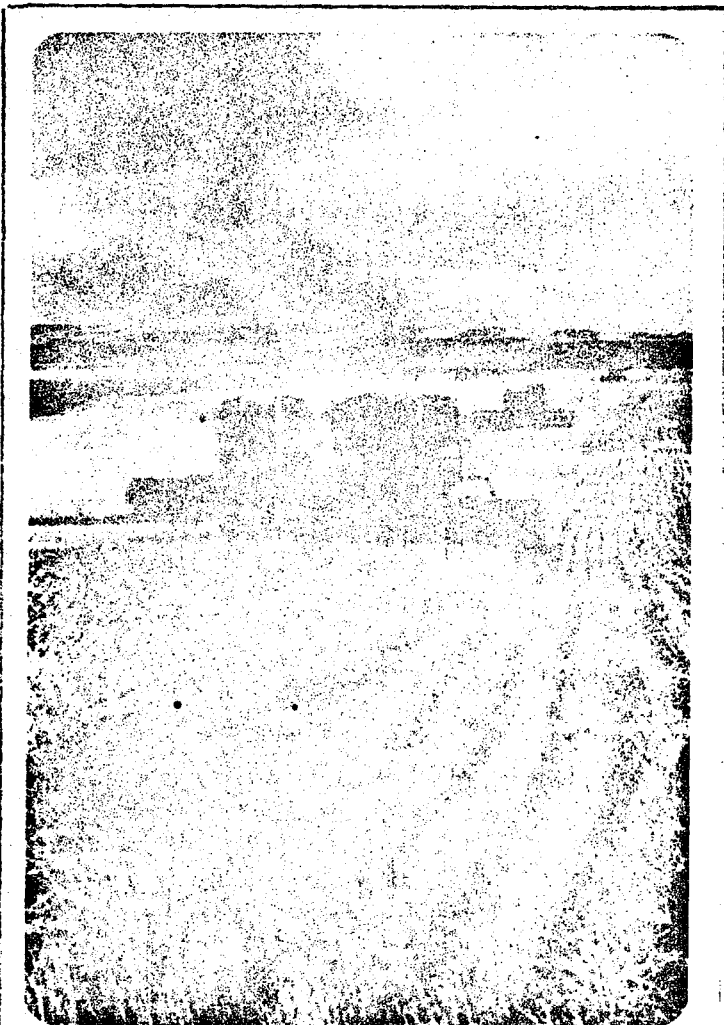
The first conference will be hosted by Lewistown on September 13. Many exciting topics have been planned to aid genealogy bugs in their research endeavors.

The second event of the autumn season is the Montana State Seminar which will be hosted by the Great Falls Genealogy Society on October 4, 1980. It will be held at the Paris Gibson Square, 1400 7st Avenue North, Great Falls. The meeting will convene at 10:00 a.m. and adjourn at 4:00 p.m.

For more details on either of these conferences contact Betty Marshall, BMGS President.

BMGS MEMBERSHIP LIST

- |                 |                    |
|-----------------|--------------------|
| Helen Aaberg    | Chester, Montana   |
| Barbara Cady    | Rudyard, Montana   |
| Gary Cady       | Rudyard, Montana   |
| Marj Dahinden   | Joplin, Montana    |
| Joe Domire      | Rudyard, Montana   |
| Lilly Eveland   | Chester, Montana   |
| Howard Eveland  | Chester, Montana   |
| Linda Fossen    | Joplin, Montana    |
| Lillie Fritz    | Chester, Montana   |
| Anna Mae Hanson | Chester, Montana   |
| Pat Laird       | Chester, Montana   |
| Betty Marshall  | Chester, Montana   |
| Alice Shepherd  | Chester, Montana   |
| Marty Thieltges | Chester, Montana   |
| Una Moog        | Inverness, Montana |



REAPING THE REWARDS--As these combines finish mowing down the winter wheat south of Joplin, their operators are looking forward to the end of another farming year. In celebration of the culmination of this year's harvest, the annual "Harvest Festival" will be held in Chester on September 20.

ORAL HISTORY PROJECT PROGRESSES

Dr. Arthur Dolman, BMGS Oral History Project director, met with the members of the society on August 7 and reported on the progress of the oral history project that the group has been working on since November of 1979. The project, funded by a grant from the Montana Committee For The Humanities, was finished on June 30, 1980. The majority of the tapes made of area residents have been transcribed and copies will be placed in the Liberty County Library, the Northern Montana College Library, the Montana State Historical Library in Helena, and the University of Montana Archives in Missoula. Since some tapes were not transcribed by the deadline, the BMGS members would like to finish these transcriptions and to record more Hi-Line oral histories. Society members plan to apply for a continuation of the grant for the coming 1980-1981 year.

New Officers Elected

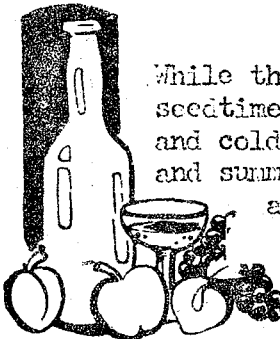
- President: Betty Marshall
- Vice President: Helen Ann Aaberg
- Secretary: Anna Nae Hanson
- Publicity: Una Moog
- Historian: Helen Ann Aaberg
- Publications and Program: Linda Fossen
- Treasurer: Gary Cady

QUILT - GASOLINE RAFFLE

During the month of September the members of the BMGS will be selling tickets for a raffle of 25 gallons of gasoline and for a beautiful quilt designed and constructed by Barbara Cady. The quilt features an original graphic of the Sweetgrass Hills surrounded by grain fields. The winning ticket will be drawn at the "Harvest Festival" in Chester on September 20.

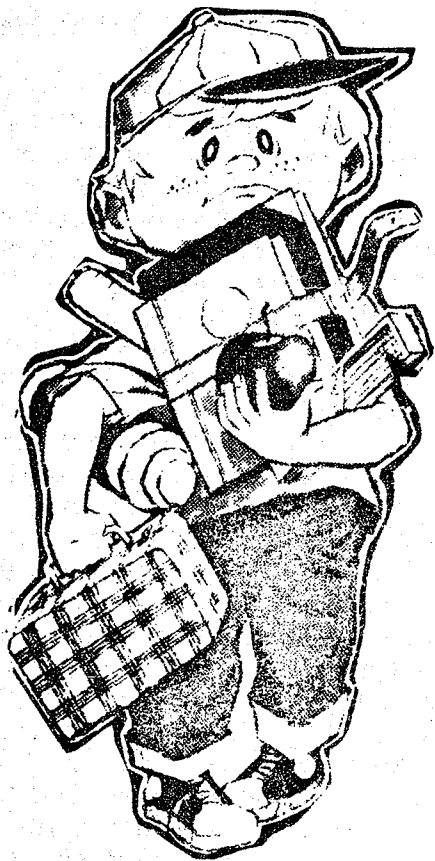
\*\*\*\*\*

HARVEST



While the earth remaineth,  
seedtime and harvest,  
and cold and heat,  
and summer and winter,  
and night and day,

shall not cease.  
GENESIS IV, 22



ANNOUNCING, ANNOUNCING--New exchange publications from many different states are now arriving in the Liberty County Library. They are coming just in time to help all of the local BMGS members with their fall "Back to Basics" research.

EXCHANGES MADE

The BMGS is proud and excited to announce that they are currently exchanging publications with the following genealogical societies. All of these publications will be great assets to the BMGS genealogical library.

"Black Hills Nuggets", published by the Rapid City Society For Genealogical Research, Inc., P.O. Box 1495, Rapid City, South Dakota 57709.

"Bulletin of the Seattle Genealogical Society", published by the Seattle Genealogical Society, P.O. Box 549, Seattle, Washington 98111.

"Central Montana Wagon Trails", published by The Lewistown Genealogical Society, 701 West Main, Lewistown, Montana 59457.

"Gallatin Trails", published by the Gallatin Genealogical Society, P.O. Box 2020, Bozeman, Montana 59715.

"Smoke Signals", published by the Assiniboine Genealogical Society, P.O. Box 321, Havre, Montana 59501.

"The Dakota Homestead Historical Newsletter", published by the Bismarck-Mandan Historical and Genealogical Society, 2708 North 4th Street, Bismarck, North Dakota 58501.

"The Prairieland Register", published by the Prairieland Genealogical Society, 703 North 6th Street, Marshall, Minnesota 56258.

"Treasure State Lines", published by the Great Falls Genealogy Society, Paris Gibson Square, 1400 1st Ave. North, Great Falls, Montana 59401.

## HAZE GOLD

Sun, you may send your haze gold  
 Filling the fall afternoon  
 With a flutter of many gold feathers.  
 Leaves, you may linger in the fall  
 sunset  
 Like late lingering butterflies  
 before frost.  
 Treetops, you may sift the sunset  
 cross-lights  
 Spreading a loose checkerwork of gold  
 and shadow.  
 Winter comes soon--shall we save this,  
 lay it by,  
 Keep all we can of these haze gold  
 yellows?

--CARL SANDBURG

# THE CHESTER SIGNAL

B. B. WELDY, Publisher.

Published Every Thursday

Entered as second-class matter April 1, 1905 at the post office at Chester, Montana, under the Act of Congress of March 3, 1879.

### SUBSCRIPTION RATES:

One Year	-	-	-	-	-	\$1.50
Six Months	-	-	-	-	-	75c
Three Months	-	-	-	-	-	40c

THURSDAY, JANUARY 16, 1913.

Official Newspaper of Hill County, Montana.

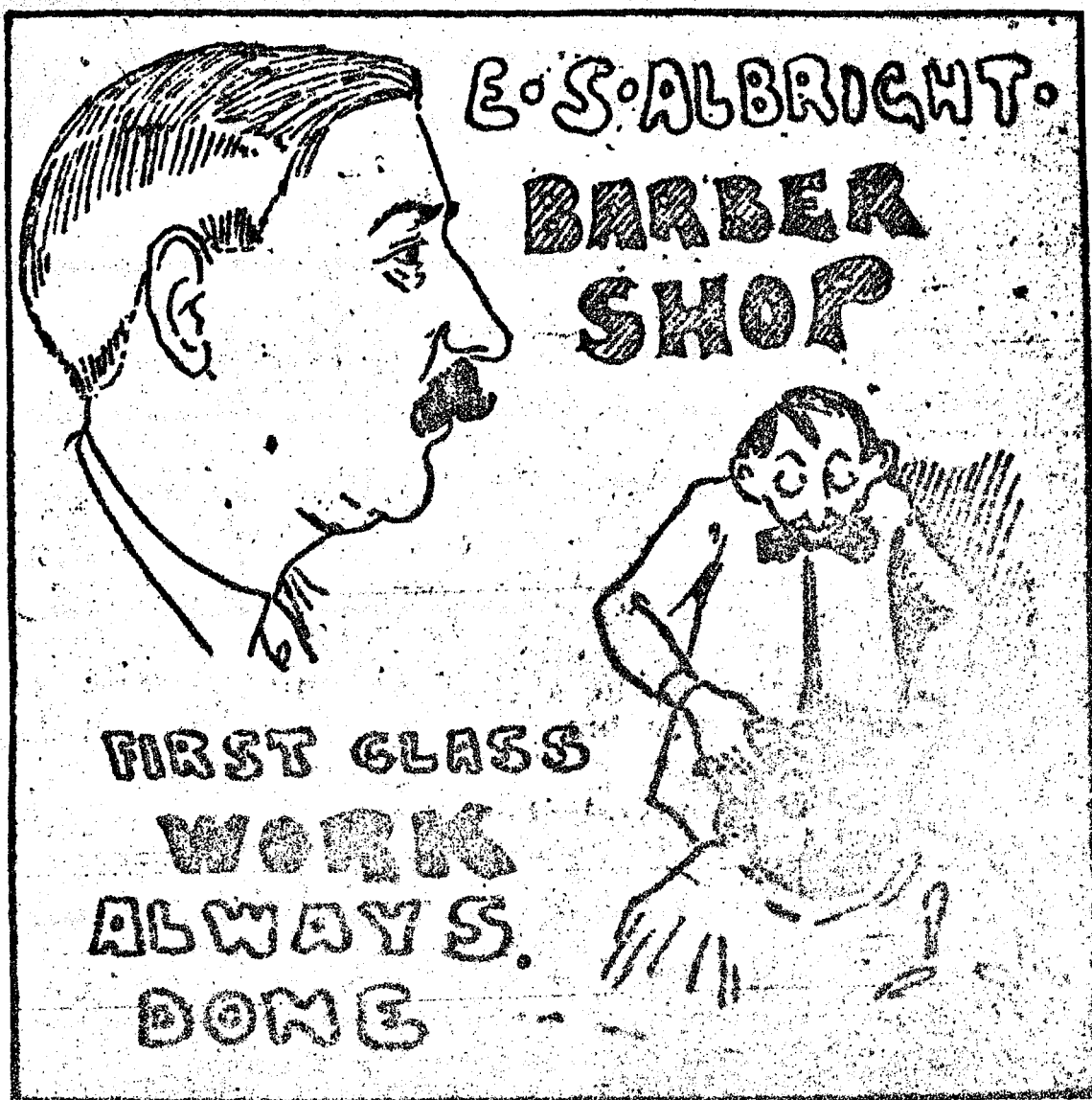


### NEW ADVERTISING RATES

The new advertising rates for the Chester Signal will become effective January 1st, 1913 and will be strictly with the following scale:

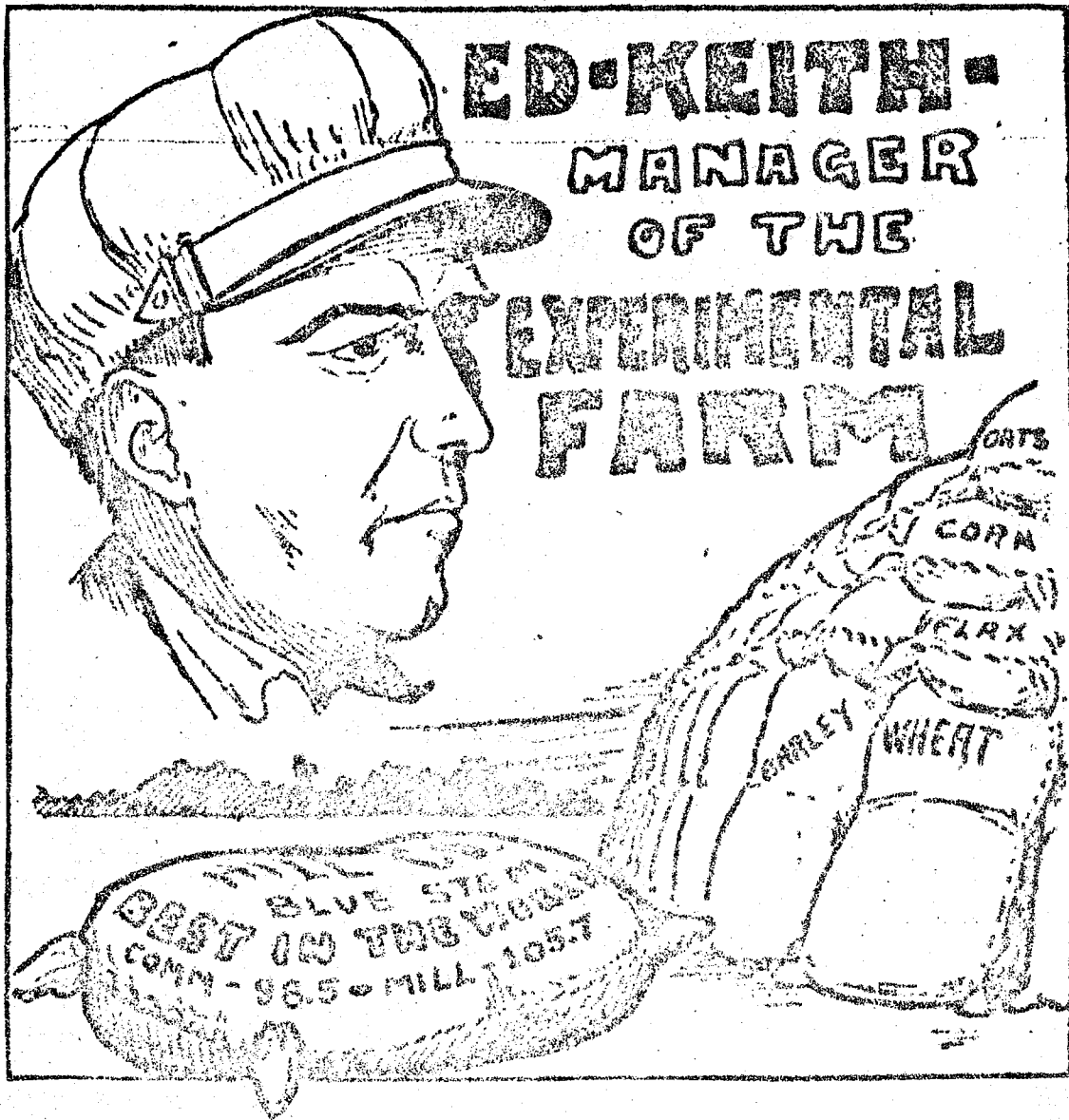
- Display advertising, per column inch, less than five inches per week, transient, 25c
- per col. inch, six or twelve month contracts 50c
- More than five inches and less than a column of 20 inches, transient 30c
- same six months or a year 1.00





### E. S. ALBRIGHT

Mr. Albright came to northern Montana about seven years ago and settled near Alma, where he has a splendid ranch. When things began to loom up big for Chester he moved in and is the owner of the only opera house in town. He operates the barber shop, just around the corner, and is an alderman from the second ward.



E.D. KEITH

Talk about dryland farmers and you talk about the chief of them when you name Ed Keith, who has been superintendent of the local experiment farm ever since its establishment, and while the results have not always been as good as his neighbors, the fact is the farm is for experimental purposes and not expected to produce the best of everything.

Ed is a booster and has helped place the commercial club on a better footing and was a prime mover in organizing the Grange.

From: "CHESTER SIGNAL"

Published at Chester, Montana

Publisher: B. B. Weldy

13 February 1913



QUERIES???

TAPLIN

Looking for information on Esaw TAPLIN b 7 July 1859 in England. He had a son, Charlie TAPLIN. It's possible he lived in Davidson Co., South Dakota.

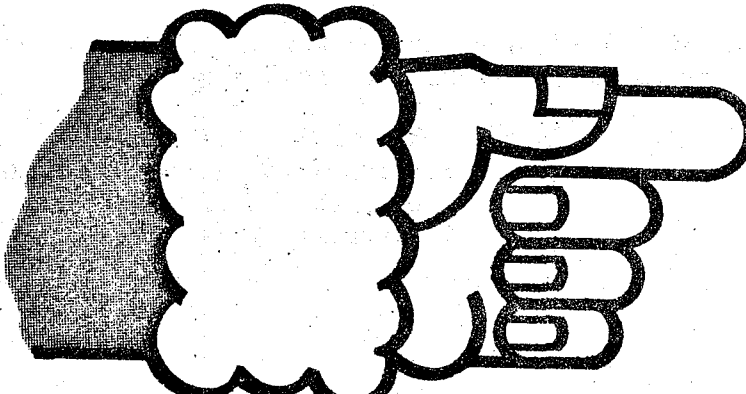
MORWOOD  
MCKELVEY  
TAPLIN

Am also looking for information on Katherine MORWOOD b 10 March 1869 in Ireland. Parents were Samuel MORWOOD and Sarah MCKELVEY. Did Samuel and Sarah come to the U.S.? Katherine married Solomon TAPLIN in Kingsley, Iowa on 31 August 1889 and came to Montana in 1914 approximately.

From: Betty MARSHALL  
Chester, Montana 59522  
\*\*\*\*\*

KUHRY  
FOCH

Am interested in corresponding with anyone with the KUHRY surname. I am unable to find date of immigration of Valentine KUHRY, b 1811 in Alsace, to Ontario, Canada. He married Magdalene FOCH.



DON'T FORGET!  
Get your queries in by February 5, 1981 and they will be included in the next edition of "The Searcher".

QUERIES???

MILLER  
SHUH

Also request information on Abraham MILLER, b 1769 in York County, Pennsylvania. m Barbara SHUH. d Kitchener, Ontario.

From: Helen Ann AABERG  
Box 555  
Chester, Montana 59522

\*\*\*\*\*

BITTNER  
LUDY  
WOLF

Seeking information about Valentine BITTNER b 1823; m Caroline LUDY d 1909. Both came to U.S. Caroline BITTNER b 3 March 1873 in Odessa, Russia, m Henry WOLF b 1845 in Germany, the son of J. WOLF.

ROGERS  
HALE

Also researching ancestry of Howard W. ROGERS b August 1827 in Pennsylvania to Dickenson ROGERS whose parents were b in Maine and Pennsylvania. Howard W. ROGERS m Clarendia A HALE b 1837 in Wisconsin. Both of Clarendia's parents were born in Kentucky.

ROGERS  
GRANGER

Also looking for information on Juluis N. GRANGER b 28 August 1857 in Michigan, the son of Juluis GRANGER, m Minnie Adel ROGERS b 12 November 1861 in Moscow Co. Wisconsin.

From: Gary CADY  
Box 81  
Rudyard, Montana 59540

\*\*\*\*\*

ANDERSON/ANDERSEN  
JENSEN

Olof ANDERSON (ANDERSEN) b 2 March 1851 in Lilli Sund, Sweden; m Mary Christina JENSEN b 16 April 1858 in Mon, Denmark. Came to U.S. in 1881 and Canada in 1906. Peter JENSEN b 2 April 1835 in Denmark, father of Mary. I would like information on any of these ancestors.

LEFLEY  
WATSON

I also wish information on Charles Fredrick LEFLEY b 22 July 1869 in Sheffield, England, son of Robert LEFLEY b Hull, England and Ann WATSON, b Manchester, England.

From: Barbara CADY  
Box 81  
Rudyard, Montana 59540

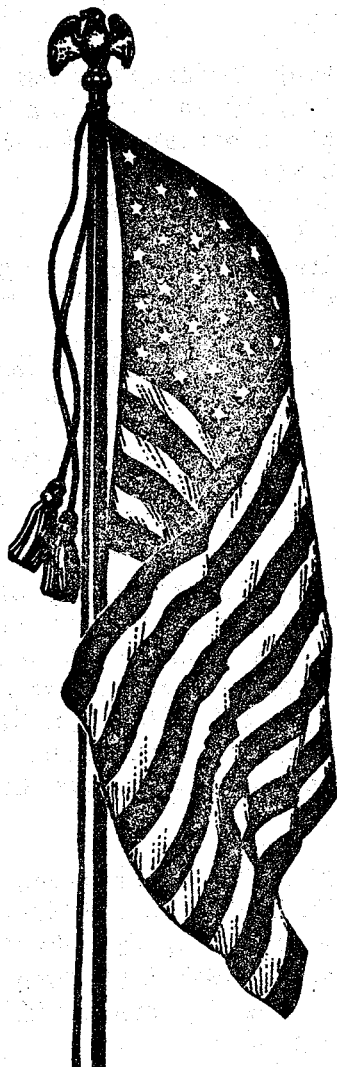
\*\*\*\*\*

QUERIES???

MUSSON  
ROBINSON

WICKS  
DAVEY  
POLLARD

TREEBY  
GRAHAM  
BERG  
ERICSON  
WEDGE



GROVOM/GROVUM

TJOSTELSON/KJOSTELSON  
STEEN

QUERIES???

Also request information on Redrick  
MUSSON b Ontario, Canada and Chris-  
tina ROBINSON b London, England,  
daughter Ann Elizabeth MUSSON b 16  
August 1871 at Islington, Ontario,  
Canada.

Researching the family of William  
Joseph WICKS b 18 April 1818 at Cop-  
perhouse, Cornwall, England; son of  
Jennifer DAVEY and Joseph WICKS.  
William m Elizabeth POLLARD b 8 Feb-  
ruary 1833 at Garnet, Guenear Parish,  
England. Elizabeth was the daughter  
of Joseph POLLARD b 1802 in England  
and Mary b 1806 in England. William  
Joseph WICKS family came to U.S. in  
1840. The POLLARD family came in  
1840-1845.

Also researching William TREEBY b  
13 April 1835 in Denvonshire, England;  
He was with Sherman's march to the  
sea; m Elizabeth GRAHAM b 6 August  
1839 in Cincinnati, Ohio, the daughter  
of John GRAHAM of Trivoli, Iowa, and  
the widow of Andrew BERG. William  
later married Stena ERICSON. William  
was the son of Christerfur TREEBY and  
Elizabeth (WEDGE) of Devonshire,  
England.

From: Barbara CADY  
Box 81  
Rudyard, Montana 59540

\*\*\*\*\*

Wanted information on descendants of  
Neils OLSON GROVOM (or GROVUM) that  
lived in Wisconsin and Iowa. Sons of  
Neils were: Halvor, Andrew, Nels  
that settled in North Dakota and Mont-  
ana, and son Ole GROVOM that settled  
in Minnesota.

Also I am looking for descendants of  
Johan TJOSTELSON (or KJOSTELSON); he  
was in Dane County, Wisconsin in the  
1800's and Iowa in 1873. He changed  
his name to John STEEN sometime. He  
lived in North Dakota and Minnesota  
in the late 1800's and the early  
1900's. In 1913 he moved to Montana.

From: Anna Mae HANSON  
Box 204  
Chester, Montana 59522

QUERIES???

QUERIES???

ALLEY

I am seeking information on brother and sister descendants of James (N.M.N.) ALLEY b 16 March 1848. Some of his children were born in Farmers, Kentucky. I am interested in learning his ancestor's line. I will be willing and able to provide exchange data.

KEITH  
DODDS

Also I am interested in exchanging data on Edmond Dodds KEITH b 21 May 1830 in Dundee, Scotland. m 24 June 1851 to Margurite DODDS. Margurite was b 24 August 1833.

MOOG

Seeking information on families of siblings of John Sylvester MOOG b 31 December 1856. His father and uncles came from Germany during the first half of the 1800's. John's father and uncles immigrated together but were separated upon landing in the United States. They went to different areas of the country. I will exchange information.

From: Una ALLEY MOOG  
Box 744  
Inverness, Montana 59530

\*\*\*\*\*

CONNEL  
OMANS  
FRYE

I am interested in learning more information about a missing parent! Willard Martin CONNEL probably b in or near Clinton, Missouri. However, his birthplace and date are uncertain. Born in early 20's. Served as Petty Officer USN during WWII. m 1944 to Betty Jean OMANS, b 1 May 1930 at Springfield, Missouri. Divorced. m Kenneth FRYE. Children: Infant girl; Charles Tobias b 15 October 1945 at Clinton, Missouri; and Robert Wayne b 24 June 1947 at Clinton, Missouri.

From: Lilly F. EVELAND  
Box 456  
Chester, Montana 59522  
or  
Charles T. CONNEL  
Box 625  
Chester, Montana 59522

\*\*\*\*\*

QUERIES???

QUERIES???

ERICKSON  
HOLUM  
TORSDATTER  
OTTERNES

Seeking information about ancestors and descendants of Amond ERICKSON (may have later changed his name to HOLUM), b 1813 at Vikesland, Norway, and his wife, Anna TORSDATTER, b 1815 at Holum, Norway. Anna d 6 February 1907 at Flom, Norman County, Minnesota. Amond and Anna arrived in the U.S. in 1857 and settled near Spring Grove and Blackhammer, Minnesota. Later they moved to Norman County, Minnesota. Erick HOLUM, their son, was b 17 August 1844 in Norway. Erick m Randi OTTERNES on 22 February 1871. Erick d 12 February 1935 at Havre, Hill Co., Montana. Randi d 7 December 1930 at Flaxville, Daniels County, Montana.

LIEN  
BRENDEN  
BRAGET

I am also interested in corresponding with the decendants of Ole LIEN b 30 November 1837 in Norway, and his wife, Embjor BRENDEN, b 31 May 1842 in Norway to Jacob BRENDEN and Guri BRAGET. Ole d 5 February 1923 at Wild Rice, Norman County, Minnesota. Embjor d 26 May 1912 at Flom, Norman County, Minnesota. Children of Ole and Embjor were: Henry, Johon, Emma, Lena, Oscar, Bergitte, Gust, Marit, and Peter. Ole and Embjor (BRENDEN) LIEN farmed near Twin Valley, Norman County, Minnesota.

FRANKE  
HARTWICK  
REAGACH

Am also interested in researching August FRANKE, b in Germany. He arrived in U.S. in 1893. His second wife was Veronika HARTWICK, b 2 September 1850 to Martin HARTWICK and Elizabeth REAGACH at Kleinitz, Germany. Veronika d 1 June 1927 at Joplin, Montana. August and Veronika lived most of their lives in the Kenmare, North Dakota area. Two of their children were Agnes and Ann FRANKE. I will exchange information.

From: Linda PIMLEY FOSSEN  
Box 27  
Joplin, Montana 59531

\*\*\*\*\*



REST IN PEACE--Otto and Edith (HOLM)  
 FOSSEN pose for their 1913 wedding  
 picture. They are among the many early  
 Joplin area homesteaders who are buried  
 in the Joplin Cemetery.

JOPLIN CEMETERY INSCRIPTIONS

The following tombstone inscriptions were recorded by Linda (PIMLEY) FOSSEN during July of 1978. This data was taken from the grave markers in the Joplin Cemetery located approximately one fourth mile east of Joplin, Liberty County, Montana.

Larry D. AABERG  
 1947

Carrie AMUNDSON  
 1868-1956  
 mother

Otto M. AMUNDSON  
 1860-1923  
 father

Arthur R. ANDERSON  
 September 23, 1906  
 December 30, 1926

Ida A. ANDERSON  
 1882-1978

James E. ANDERSON  
 Died October 18, 1949  
 Age: 7 weeks

Nels George ANDERSON  
 1899-1913

Simon C. ANDERSON  
 1887-1934

BAKKE  
 Clarence P.                      Sylvia W.  
 Montana                      1898-1950  
 P.F.C. II  
 Marines  
 World War I  
 1894-1949

BAKKE  
 Mads P.                      Magna R.  
 1855-1935                      1872-1939

Roy Malando BAKKE  
 Montana  
 Bugler, 76 Inf.  
 May 14, 1919

Alfon L. BERGSTROM  
 1905+1927

Mother  
 Anna D. BERGSTROM  
 1876 + 1951

Arthur B. BERGSTROM  
 1901 + 1933

Father  
 Per John BERGSTROM  
 1869                      1915

James BERRY  
 1876-1944



BJORNSTAD

Carl  
1882-1938

Ida  
1884-1972

Mother

Julia T. BILDEN  
1883-1934

Father

Lewis BILDEN  
1882-1954

Walter D. BILDEN  
1951-1969

Annette BOWMAN

Clarence GRAFF

Minnesota

Pvt. 30 Inf. 3 Div.

March 13, 1936

"Death with a stern,  
relentless hand,  
Looked in and thinned  
our little band."

Ben K. BRANDVOLD  
1886-1971

Benny L. BRANDVOLD

Montana

T Sgt. 362 infantry

W. W. II Korea

BSM - 2ph

June 14, 1920

September 8, 1950

Donald B. BRANDVOLD  
1917-1961

Julia BRANDVOLD  
1892-1935

Ida SEM BUCKLER  
1912-1937

Charles BURTON  
1877-1936

Mother

Mamie Susan BURTON  
July 27, 1888  
August 13, 1976

Julius Henry BUSKERUD  
1881-1961

CADY

James Elliot CADY  
1868-1945

Agnes W. CADY  
1880-1952

Hedvig CALIN

October 22, 1871

December 20, 1924

Sigrid CALIN

1894-1920

CARLSON

Father

Algot CARLSON  
1868-1946

Mother

Anna M. CARLSON  
1889-1976

John M. CARLSON  
1863-1927

Harold F. ERICKSON

July 5, 1914 January 3, 1929

FOSSEN

Otto S.

1890-1957

Edith

1889-1965

Donald FRASER

1883-1973

Clarence J. FREELAND

1861-1931

C. M. FREELAND

1914 1976

FREELAND

Stina R.

1884-1949

Leon G.

1886-1930

Nora D. FROST  
1867-1942  
✕

Hazel FUNK

Vanora R. FUNK

Waldo N. FUNK  
Age 74  
1887-1961

Harold A. FUSK  
Montana  
PFC 400 Base HQE  
AB SQ AAF  
December 20, 1921  
September 5, 1966

Olianna FUSK  
1891 + 1967

Peter FUSK  
1887 + 1959

In memory of daughter  
Mabel M. GENSMER  
1898-1915

In Memory of Son  
Oliver H. GENSMER  
1896-1915

Father  
Wilhelm GESCHE  
1831-1912

Samuel H. GILBERT  
1878-1915  
Gone but not forgotten

Marie H. GREEN

GRIMSTAD  
Anna                      Ole  
1883-1932                1874-1962

Hilman I. GROVEN  
February 19, 1902  
December 1, 1922  
At Rest

GROVEN  
Nels K.                      Betsy  
1872-1940                1877-1950

Lars HAALAND  
1884-1918

HADFORD

Anna Marie HADFORD  
~~born~~: March 20, 1957  
~~die~~: April 1, 1923  
At Rest

Carl Alfred HADFORD  
August 15, 1886-June 3, 1975

Clara HADFORD  
1889-1955

William HADFORD  
1891-1955

Hans W. HENDRICKSON  
1869-1946

Effie HEYDON  
1891-1972

Frank E. HEYDON  
1884-1955

HEYDON  
Franklin J.  
1916-1963

Lloyd L. HEYDON  
MOMM 3 U.S. Navy  
World War II  
1923-1976

Alfred V. HODGES  
January 2, 1900  
August 20, 1922

Harry Lee HODGES  
1898-1943

Because I could not stop for  
Death  
He kindly stopped for me;  
The carriage held but just  
ourselves  
And Immortality.  
EMILY DICKINSON  
(1830-1886)

Mary Kay HODGES  
1945-1946

Nellie May HODGES  
1895-1943

Thomas HODGES  
1878-1972

Wesley R. HODGES  
1928-1964

William N. HODGES  
1912-1971

Olai E. HOLUM  
1879-1966

Agnes I. HUNT  
1904-1957

Martha Jane HYLE  
1871-1944  
At rest

Thomas H. HYLE  
1864-1928  
At rest

Peter JENSEN  
1870-1945  
Father

Sophia JENSEN  
1869-1925  
Mother

JOHNSON

Mother                      Father  
Anna E.                      Anius  
1879-1944                      1859-1933

Berger JOHNSON Sr.  
1884-1963

Mother  
Bertina JOHNSON  
1895-1926

Clyde H. JOHNSON  
1905-1946

JOHNSON twins

Olof P. KINDBERG  
1874-1945

Elmer KLEMM  
Pfc U.S. Army  
World War II  
1909-1976

Elmer LA BORTA  
1901 + 1966

LAKE

Charley LARSON  
1863-1945

Earl Gray LA VALLEY  
1924-1928

Laura S. LA VALLEY  
January 30, 1891  
January 11, 1919  
At Rest

Mother & Baby Ruth (LA VALLEY?)

Paul H. LA VALLEY  
1932-1961

Prosper H. LA VALLEY  
1864-1932

Raymond H. LA VALLEY  
1924-1944

Father declared he was going to buy a new plot in the cemetery, a plot all for himself. "And I'll buy one on a corner," he added triumphantly, "where I can get out!" Mother looked at him, startled but admiring, and whispered to me, "I almost believe he could do it."

From: "Life With Father"  
By: Clarence Day  
(1874-1935)

Sopia M. LA VALLEY  
1858-1939

Jean F. LYLE  
October 1921

John LYLE  
Montana  
1st Sgt. 543 Engineers  
World War I  
September 16, 1894-May 8, 1950

Leopold MARTELL  
Born 1854  
Died 1933

Julia Mabel MARTINSON  
Daughter of  
Olaf A. and Julia MARTINSON  
Born March 2, 1910  
Died November 4, 1916

Clarence Eugene MC CANN  
June 29, 1942

Clarence L. MC CANN  
1909 -1969

Dad  
Edward S. MC CLELLAN  
1869-1936

Mother  
Margaret MC CLELLAN  
1874-1947

Mrs. Ole MEDTHAUG

Mother  
Josephine M. MELDRUM  
1891-1918

Russel MILES  
March 6, 1890  
January 6, 1942  
"father"

Helen MILLER  
1920

MILLER  
Louisa A.            James B.  
1867-1947            1856-1929

Doris MLINAR  
August 26, 1919  
December 13, 1920

Joseph MLINAR  
1887-1961

Lorraine MLINAR  
August 3, 1921  
November 5, 1936

Mathew O. MOLDEN  
1880-1969

~~Edmond~~  
~~Edmond~~ MOOTZ  
May 17, 1893  
October 24, 1912

Emil NELSON  
1888-1975

Lucie V. NELSON  
1865-1924

Nels J. NELSON  
1884-1974

Baby NORLANDER  
11-8-56

Edwin O. OBIE  
1888-1975

Norman L. OBIE  
1920-1944

OHMAN  
Fred  
1890-1942

Agnes  
1886-1929

Carl  
1853-1916

Christina  
1863-1937

Bertha M. OLSON  
1871-1925  
At Rest

Chloe E. OLSEN  
1886-1933

Colonel OLSON  
1890-1972

Evelina OLSON  
1869-1940

PETERSON

Christina J.  
1870-1937  
Mother

Peter H.  
1858-1919  
Father

H. Clarence PETERSON  
1888-1950

John PETROSKI

Martha M. PHELPS  
1878-1956

Jesse PIMLEY  
1929-1977

Percy F. PIMLEY  
1894-1976

Bertha B. POETZL  
1885-1968

Franklin K. POETZL  
1911-1972

Joseph C. POETZL  
1877-1966

Benjamin A. POPPLER  
1886-1964

Mother

Ruth POPPLER  
1885-1974

Im memory of  
Sarah E. POPPLER  
1911-1928

Violet M. ROBO  
1938-1960

ROLPH

Margaret A.  
1871-1945

Eugene A.  
1861-1929

ROVREIT

Son

Inar  
1908-1937

Lora Lee  
"Daughter of  
Inar and Bessie  
1934-1936

Mother

Lottie  
1880-1949

Father  
Oluf  
1879-1952

Our baby

Cynthia Ann RUDOLPH  
1955

Hazel V. RUDOLPH  
1891-1961

Marilyn Joy RUDOLPH  
January 16, 1936  
January 20, 1936  
"Our darling"

Luverne LaValley SARGENT  
1915

SAUER

Verne P.  
1889-1977

Valois D.  
1928-1950

Carl O. SEM  
1878-1947

Clifford P. SEM  
1918-1970

Mother

Petra SEM  
1879-1961

Ellen M. SIDENFADEN  
1865-1951

John SIDENFADEN  
1860-1928

Jackie Steve SIEMENS  
October 4, 1936  
February 7, 1937

Either death is a state of nothingness and utter unconsciousness, or, as men say, there is a change and migration of the soul from this world to another...Now, if death be of such a nature, I say that to die is to gain; for eternity is then only a single night. SOCRATES (470-399 B.C.)

Jens SKJERVEN  
November 23, 1886  
May 2, 1915

Gary D. SKONORD  
1939 + 1955  
son

Gary P. SKONORD  
1936-1937

Gustava SKONORD  
1874 + 1956

Lars P. SKONORD  
1872 + 1949

Trygve SKONORD  
Montana  
Pvt ORD DET  
May 31, 1934

Helge SPABERG  
1871-1925

Martin Roger SNIPPEN  
October 15, 1920  
January 12, 1921

SPONHEIM  
Father  
Peter  
1897-1970  
"Forever with the Lord"

"Our Rosebud"  
Karina Dee Ann SVENSON  
August 11, 1976  
November 13, 1976

Archie TERNSTROM  
1902 + 1966

August W. TERNSTROM  
1869-1943

Mary TERNSTROM  
1879 + 1950

George F. THIELMAN  
1911-1972

"Our Eternal Son"  
Casey Lane THORSEN  
September 10, 1977

Gilbert M. THORSON  
"Evening time it shall be light"  
1879-1934

Mabel S. THORSON  
"Evening time it shall be light"  
1886-1971

In Memory of Brother  
Gustave A. Tracht  
1871-1928

Albert WATERMAN

Gust R. WERNBORG  
1887-1963  
"May he rest in peace"

Ida WESTERLUND  
Wife of P. WESTERLUND  
Born July 27, 1878  
Died August 6, 1916  
Rest in Peace

Peter WESTERLUND  
1866 \* 1950

WHELCHEL

Ardella Jane (WHELCHEL?)  
1863 \* 1025

John Thomas (WHELCHEL?)  
1854-1912

WHELCHEL

Ora Otto WHELCHEL  
Montana  
Pvt. Co F 309 AMMOTN  
W.W.I  
March 16, 1890  
May 12, 1957

Henrietta O.  
1897-1935

William W. WHITFORD  
1872-1960

Mother  
Grace M. WILMES  
1915-1973

Roger J. WILMES  
December 1940  
October 1955

Donald R. WILSON  
1928-1939  
Together forever

WILSON  
Inezora Charles H.  
1865-1947 1869-1951

WOLERY  
Emma B. William A.  
1871-1932 1861-1934

Francis G. WOLERY  
October 21, 1897  
January 20, 1933

Jolene Alicia WOLERY  
April 18-April 19, 1976

Henry B. WOLF  
1891-1970

Irene WOLF  
1893-1973

Hawley WYMOND  
Indiana  
Pvt. 39 Inf.  
April 14, 1935

Hawley Paul WYMOND  
1925-1928

Keyes YINGENT

Issac YOUNG  
1877-1949

\*\*\*\*\*

For the common man, the best memorial is some beneficent thing or function that shall bear his name.  
CHARLES TOWNSEND COPELAND  
(1860-1952)



NORWEGIAN HOMESTEADER--Like many of the early settlers in the Joplin area, Gustava SKONORD immigrated to the United States from Norway. She was laid to rest in the Joplin Cemetery in 1956.

THE NOBLEST OF ALL SEPULCHRES

"The sacrifice which they collectively made was individually repaid to them; for they received again each one for himself a praise which grows not old, and the noblest of all sepulchres--I speak not of that in which their remains are laid, but of that in which their glory survives, and is proclaimed always on every fitting occasion both in word and deed. For the whole earth is the sepulchre of famous men; not only are they commemorated by columns and inscriptions in their own country, but in foreign lands there dwells also an unwritten memorial of them, graven not on stone but in the hearts of men.

From: Peloponnesian War. Book II  
"Funeral Speech of Pericles"  
By: THUCYDIDES (471-401B.C.)

\*\*\*\*\*



SILENT SENTINALS--These dry, solitary weeds, located near the Rudyard Cemetery, stand as mute reminders of the approach of fall and winter in north central Montana.

RUDYARD CEMETERY RECORDS

The following inscriptions were transcribed from the Rudyard Cemetery grave markers by Barbara and Gary CADY during July of 1978. The Rudyard Cemetery is located one half mile north and one mile east of Rudyard, Hill County, Montana.

Baby ASPEVIG  
February 7, 1925

Donald G. ASPEVIG  
Montana  
Sgt 1583 Engineer SVC Co  
January 28, 1927 - November 8, 1963

Henry L. AEVERMANN  
1878-1966

Herbert E. ASPEVIG  
1892-1948

LeRoy D. ASPEVIG  
Montana  
2nd Lt. Army Air Force  
World War II  
October 25, 1920 - May 21, 1973

Lois L. ASPEVIG  
1920-1969

Albert BERGE  
1897-1966

Clara G. BERGE  
April 3, 1890

Eivind S. BERGE  
February 2, 1889  
April 5, 1977

Herbert L. BOEHM  
1912-1973

Ernest C. BRANDT  
1889-1953

Loren E. BRANDT  
1914-1948

mother  
Leora E. BUDEAU  
1915-1965

George J. CASE  
1874-1918

John Franklin CONNOR  
1853-1926  
father

Louise E. CONNOR  
1890-1963

Mary Frances CONNOR  
1864-1931  
mother

Robert L. CONNOR  
1890-1960

mother  
Julia DEDIC  
1868-1917



Fred H. ELLING  
1901-1963

father  
Fred ELLING Sr.  
1864-1938

Dale S. ERGENBRIGHT  
1933-1967

I have fought the good fight  
I have finished my course  
I have kept the faith II Tim. 47

Orval S. ERGENBRIGHT  
1905-1967

Daniel E. EWALD  
1906-1972

Gary FLINT  
November 27, 1915-November 20, 1972

Arnold C. GOLDBERG  
1916-1975

Charles P. GOLDBERG  
1877-1965

Katherine GOLDBERG  
1879-1968

Oswald L. GORDER  
1899-1967

Rory Shane GORDER  
1974

Baby GRAM

Phyllis GRAY  
1927-1936  
Gone to be an angel

Glenn Dale GREENO  
1959-1966

Marie GREENO  
1940

Walter M. GREENO  
1906-1976

C. Albin GUSTAFSON  
1896-1974

Frithiof A. GUSTAFSON  
1900-1970

Mathilda GUSTAFSON  
1881-1968

Nicholas GUSTAFSON  
1859-1927

Herman HABECK  
1889-1975

Tammy Jean HANSARD  
July 14, 1961  
July 31, 1977

(White stone with blue letters, hearts  
and flowers around name.)

"I can honestly say I will never forget  
this year, the happenings, or the  
people that made it that way. My  
friends, classmates, and relations were  
full with understanding and love like  
never before. If I had a chance to do  
it over again, not very much would  
change. Remembering is worthwhile!  
Just me, Love, Tammy Hansard"

"Friendship is reckoned as a master-  
piece of nature" ... Tammy

Shirley Edna HAYMAKER  
1931-1932

Elmer R. JACKSON  
1918-1924  
son

"Howdy"  
Howard G. JACKSON  
August 6, 1945  
April 22, 1966

mother  
Ida Mae JACKSON  
April 29, 1885  
September 19, 1967

Linzie G. JACKSON  
March 6, 1903  
May 20, 1931  
son

Raymond H. JACKSON  
August 10, 1915  
October 16, 1934  
son

Thomas W. JACKSON  
January 11, 1869  
July 20, 1936  
father

Walter H. JACKSON  
January 20, 1931  
October 27, 1946

Alfred JOHNSON  
1911-1963

Chris E. KLEMETSON  
1883-1975

Martin KLEMETSON  
1889-1927

Bessie D. KLINE  
1902-1958

Ralph KLINE  
1894-1965

Baby KNUTSON  
1918-1918

Silas Michel KNUTSON  
May 16, 1916  
February 16, 1917

mother  
Emilie KRUEGER  
1868-1942

father  
Gustav KRUEGER  
1864-1943

1916-1943  
Florine M. KULBECK  
son  
(in Rugtvedt plot)

Arthur Paul LAMBOTT  
Montana  
Pvt US Army  
World War I  
September 14, 1895-September 3, 1967

Ellen L. LAMBOTT  
1869-1946

Fred Jesse LAMBOTT  
1905-1942

Gary L. LAMBOTT  
Montana  
SP6 AVN DET 97 Signal BN  
August 3, 1940-May 13, 1968

George A. LAMBOTT  
1911-1963

Arnold C. LANGE  
1899-1974

Donald L. LANGE  
September 30, 1929-May 1, 1931

Ellen LANGE  
1873-1944

Henry Joseph LANGE  
US Army  
World War I  
1892-1977

Joseph H. LANGE  
1866-1955

Clara Marie LEDIN  
1910-1932

mother  
Frida M. LEDIN  
1877-1955

Oscar E. LEDIN  
Montana  
PFC Co. A 504 MIL Police BN  
World War II  
August 4, 1906-December 23, 1961

father  
Walter J. LEDIN  
1871-1938

John LUSTGRAFF  
1901-1955

Pearl LUSTGRAFF  
1918-1940

Ruth H. MALMBERG  
1919-1964

Anna L. NESS  
1886-1971

Sveinung T. NESS  
1892-1963

Kenneth Warren O'NEIL  
1959-1977

Louis ORTEN  
1884-1964

Cecil A. PATRICK  
July 5, 1967  
July 6, 1967

Emory O. PATTON  
1895-1971

Gladys I. PATTON  
1898-1970

Joseph A PESTER  
CPL Army Air Force  
World War II  
December 23, 1920-September 20, 1975

Annie M. PETERSON  
1880-1965

Dolph PETERSON  
June 19, 1900-June 15, 1935

Theodore PETERSON  
1874-1960

Aal Ray PHILLIPS  
1926-1926  
son

Curtis M. PHILLIPS  
1889-1973

Marjorine PHILLIPS  
1918

1882-1943  
August H. RUGTVEDT  
father

Isaac A. RUGTVEDT  
1910-1967

1946-1947  
Judy Diane RUGTVEDT

1881-1927  
Maren RUGTVEDT  
mother

Edwin S. SANDA  
August 22, 1888  
February 16, 1978

Ernest N. SHIPMAN  
1887-1976

Esther A. SMITH  
1913-1973

Albina L. SPINLER  
1906-1975

Mother  
Minnie Elling STRISSEL  
1903-1938

Victor B. STRISSEL  
1894-1964

William H. STRISSEL  
1891-1969

Bertha L. STRUCK  
1895-1975  
mother

Dorthea Ada STRUCK  
1928  
baby

father  
Frank A. STRUCK  
1889-1976

Ellsworth T. TOFTE Jr.  
1834-1936

Peter J. ULMEN  
June 11, 1884  
November 21, 1918

mother  
Katherine Sinema VAN WECHEL  
1868-1948

father  
William Sabine VAN WECHEL  
1864-1937

Baby WANKE  
July 10, 1929

mother  
Christina A. WANKE  
1906-1929

father  
Rudolph WANKE  
1898-1968

Louisa WEHR  
1887-1968

Mathew WEHR  
1887-1966

Leonard W. WENDLAND  
1899-1976

Baby WICK  
1916-1916

Burle O. WILSON  
Montana  
CPL CO H 306 Infantry  
World War I  
October 2, 1895 - September 25, 1968

Agnes Savvik WOOD  
1911-1976

Baby unknown  
(Two Holland and Bonine metal markers)

When I Go To Rest

I fancy when I go to rest some one  
will bring to light  
Some kindly word or goodly act  
long buried out of sight;  
But, if it's all the same to you,  
just give to me, instead,  
The bouquets while I'm living and  
the knocking when I'm dead.  
LOUIS EDWIN THAYER

"On the 22nd  
of June  
Jonathan Fiddle  
went out  
of tune."

JONATHAN FIDDLE

1872-1910

TOMBSTONE INSCRIPTIONS

Some old tombstones have more to impart than other markers. There are tombstones that have more inscribed on them than names and dates. Here are some examples that appeared in a recent issue of Seventeen Magazine:

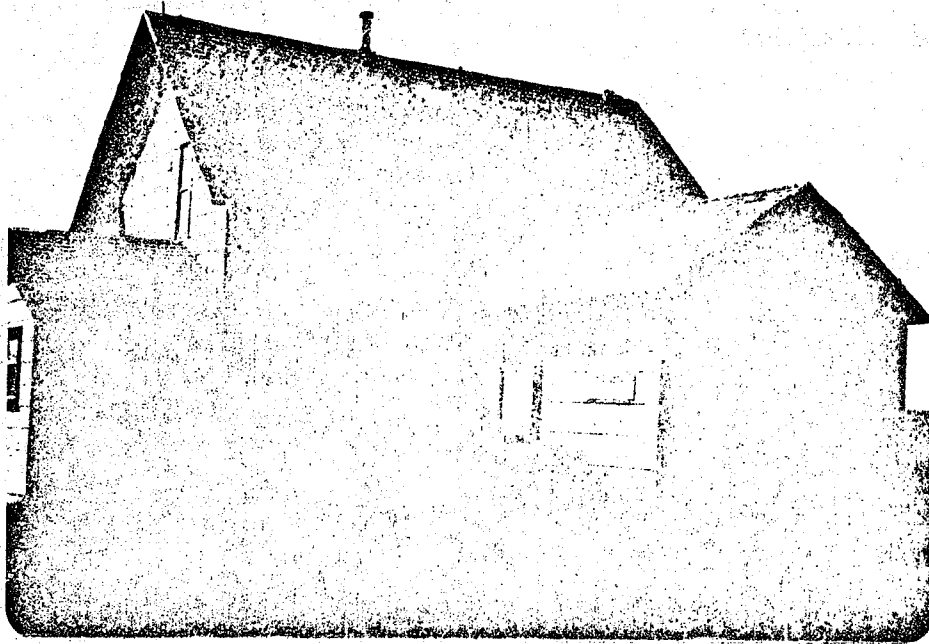
"Here lies the body of Jonathan Blake  
Stepped on the gas, instead of the brake"  
(Uniontown, Pa.)

"Here lies Lester Moore  
Four slugs, from a forty-four  
No Les No More."  
(Tombstone, Arizona)

"Here lies Butch, we planted him raw,  
He was quick on the trigger  
But slow on the draw."  
(Silver City, Nevada)

"On the 22nd of June  
Jonathan Fiddle went out of tune."  
(Hartscombe, England)

"Stranger, tread this ground with  
gravity  
Dentist Brown is filling his last  
cavity."  
(Edinburgh, Scotland)



ON A GOVERNMENT CLAIM

I'll read a few lines if only I can,  
And tell you about my excellent plan.  
You'll find me out here on the Montana plains,  
Starving to death on a government claim.  
Hurrah for this country, the land of the free!  
Home of the grasshopper, coyote and me.  
Oh, I tell of its joys and sing of its fame  
While starving to death on my government claim.

Our mansions are not painted or oiled,  
The walls not erected according to Hoyle.  
The roofs have no pitch, but are level and plain,  
And we'll surely get wet on the government claim.  
Oh, I have a good time, I live at my ease,  
On canned goods, crackers, old bacon and cheese.  
Then come to this country, there's a home for you all  
Where the winds never cease and the rains never fall,  
Where the sun never sets, but sweetly remains,  
Till it burns up the crops on our government claims.

Oh, how happy I feel on my government claim,  
There is nothing will make a man hard and profane.  
I've nothing to eat, and nothing to wear,  
The mosquitoes possess both our water and air.  
It's here I am settled, and here I must stay.  
My money's all gone, and I can't get away.  
There's nothing to lose and there's nothing to gain,  
While starving to death on a government claim.  
Hurrah for this country, the land of the free!  
Where the rains never fall and the winds never cease.  
Come join in the chorus and sing of the fame,  
Of the "honeyoch" who's stuck on a government claim.

From: "Tumbleweeds and Tar Paper Shacks" author unknown