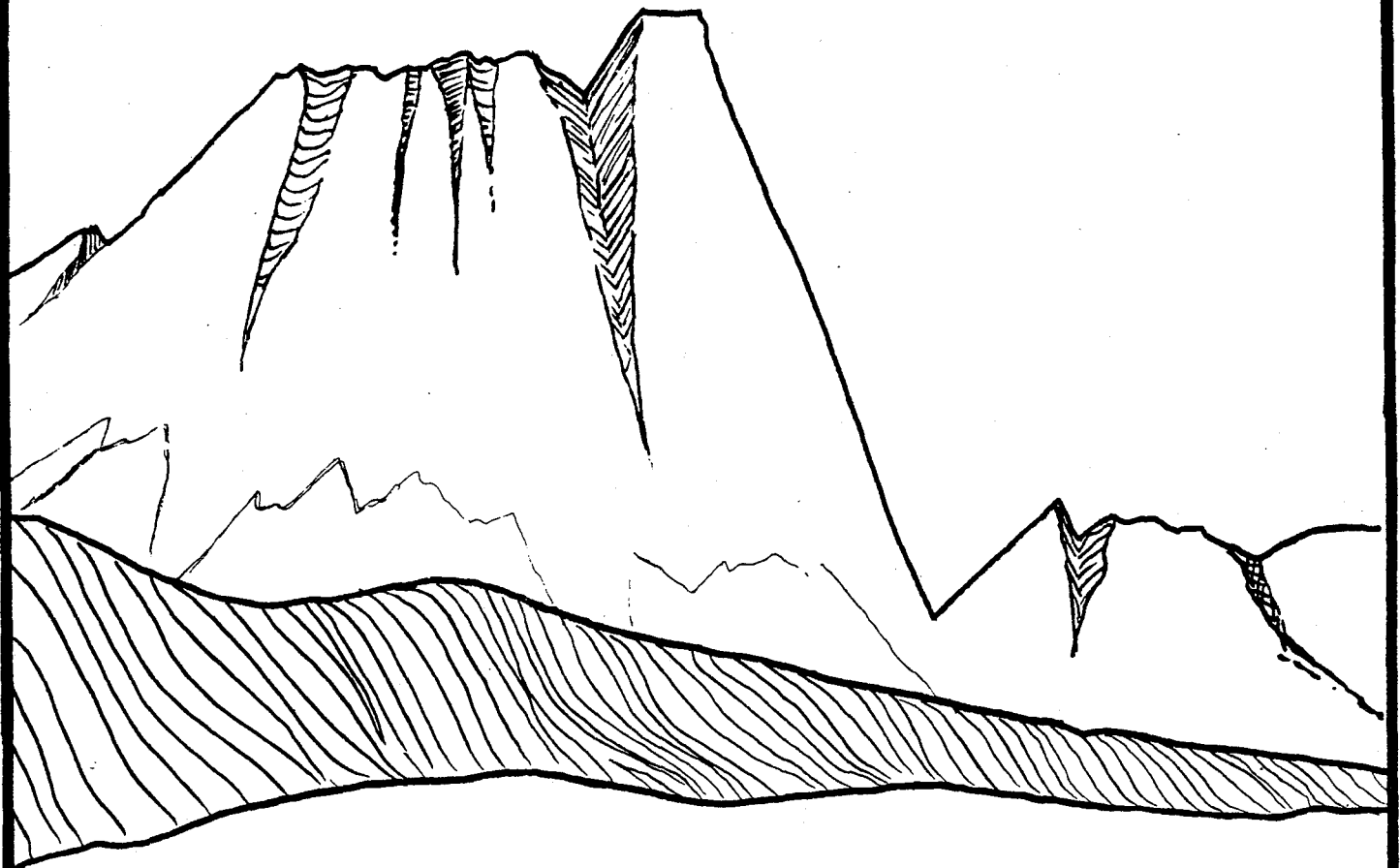


ISSN - 0742 - 5015

Broken



Mountains

GENEALOGICAL SOCIETY
BOX 261, CHESTER, MT

The Tri-County
Searcher

vol. 16 no. 1

THE TRI-COUNTY

SEARCHER

PUBLISHED BY THE BROKEN MOUNTAINS GENEALOGICAL SOCIETY

ISSN 0742-5015

MARCH 1995

CHESTER, MONTANA

VOLUME 16, NUMBER 1

GOLDEN ANNIVERSARY



CENTENNIAL

TABLE OF CONTENTS

OFFICERS _____	1
LIBERTY COUNTY DIVISION _____	2
THE COURT HOUSE _____	8
CITY & COUNTY GOVERNMENT _____	22
MARRIAGE RECORDS, CHOUTEAU CO. FORT BENTON, MT.	28
THANK YOU TO RUBY LANGEL AND UNA MOOG _____	35

**BROKEN MOUNTAINS
GENEALOGICAL SOCIETY
OFFICERS FOR THE YEAR MARCH 1995- 1996**

**PRESIDENT ----- ALINE CHRISTENOT
VICE-PRESIDENT ----- BARBARA CADY
SECRETARY----- LYLA PUGSLEY
TREASURER----- FRANCES HOCHBERGER
CALLER ----- BOBBI SWANK
CORRESPONDING SECRETARY -- ALICE SHEPHERD & ANNA MAE HANSON
EDITOR----- BETTY MARSHALL**

*** * * * ***

HAND WRITING ANALYSIS

Have you ever wondered where some of your traits came from? Have Your handwriting and that of your ancestor analyzed by computer. You can have your signature and a text of 50 words or more done. Send a sample of your writing and signature on an unlined sheet of paper to:

Broken Mountains Genealogical Society- Box # 261- Chester, Mt. 59522

**COMPLETE ANAYSIS
TEXT AND SIGNATURE
\$10.00**

*** * * * ***

MEMBERSHIP: Annual Dues (Payable March) \$10.00 for Individual Membership, \$15.00 Family membership. Honorary Membersshp are given to Senior Citizens. Members are entitled to free Query Privileges and a one year subscriptions to the "Tri-County Searcher" Published March and September. Subscriptions to publications are \$8.00 per year and \$4.00 for back issues. Those wishing to submit queries can at the rate of 5 cents per word. Send Queries to: Broken Mountain Genealogical Society-Box #261-Chester, Mt. 59522.

MEETINGS: Meetings are held the first Thursday of every month except July and August, at the Liberty County Library, Chester, Mt. At 7:30 p. m.

4 Nov. 1910 HAVRE PROMOTER - The Chamber of Commerce is in receipt of an invitation to send one or more delegates to a convention to be held at Chester next Saturday to talk county division. The call states the west enders do not recognize the lines drawn at Havre and delegates from all parts of the county are asked to come and discuss the question of a Marias County with Chester as the county seat. The call is signed by a committee composed of A.C. Strode, H.E. Loranger, and B.B. Weldy.

18 Nov. 1910 "Hingham Headlight" in HAVRE PROMOTER
CHESTER PAPERS ARE MISREPRESENTING ATTITUDE TAKEN BY PEOPLE OF WEST END on the 4-COUNTY DIVISION.

Settlers around Hingham and citizens of the towns near here are still talking about the force that Chester had for a meeting on county division a week ago. The papers printed at Chester are trying to make people believe that it was a harmonious and coherent affair and that the proposition of Chester for a fourth county has the support of every town along the line. We do not deny that it is being treated, by all the papers issued west of Hingham, with some consideration. But the facts are that the papers for Inverness, Galata, Joplin and all of the other new towns are being printed on the press at Chester and must be treated as Chester papers. We have seen and talked with a good many people farther up the line and in nearly every case these people were opposed to four county division. So far from being a fact that everyone at the Chester

meeting was enthusiastic for four county division or none, anyone who was there knows differently.

Settlers are coming in rapidly all along the line but taxable property does not increase very fast. Most of the property of which Chester boasts as being taxable consists of cattle and other live stock that in the nature of event must be shipped out of the country very soon, and in view of this it seems to us that Chester is determined to saddle the country with debt to build an expensive building at Chester. If Chester does not succeed in her attempt to stampeed things for four county division with Chester as county seat, she will have a hard time to ever get to be a county seat. There are too many good towns in the proposed third county that would make better county seats than Chester and more desirable ones from every standpoint.

25 Nov. 1910 "Concord Star" in HAVRE PROMOTER - COUNTY DIVISION AS WE SEE IT FROM EXTREME WEST END OF COUNTY. County Division to we dry farmers looks like a ten cent piece with a hole in it, at any rate so far it has proven to be a peanut. Now in the first place where are we going to get the money to erect 4 sets of county buildings and pay our county officers, as about the only taxable property we farmers will have is a milch cow and a two by four shack.

Why not wait until we have got deeds to our land, then we will have taxable property, even now our county is in debt, and what will these separate counties be like if we have county division and are not able to commute. The quickest way to have county division is to first have the commutation law into effect.

25 Nov. 1910 "Hingham Locals" in HAVRE PROMOTER - HINGHAM HAS MANY MEN THAT ARE ABLE TO COPE WITH THE MISUNDERSTANDINGS OF THE CHESTER SIGNAL SCRIBE!

9 Dec. 1910 "Hingham Headlight" in HAVRE PROMOTER - NEW MARIAS COUNTY RUN CHEAPER? WILL YOU RUN IT FOR 17 MILLS ON THE DOLLAR, THE AMOUNT WE NOW PAY?
HINGHAM HAS THE RIGHT TO KNOW!

DISAPPOINTED POLITITIONS WANT PLUM - Nothing Doing!

We stand for the Greatest Good to the Greatest Number. The trouble is four county division cannot be proved to be a good thing for anyone but Chester.

12 Jan. 1911 CHESTER SIGNAL - Schwartz introduced the bill to create Hill Co. in the house today. It is proposed to name the new county east of Havre, Blaine.

2 Feb. 1911 - The bill to create Marias County was introduced in the Senate last Thursday by Senator Leary of Lincoln County; and our people hereby extend the gentleman a vote of thanks.

16 Jan. 1912 Hill, Mont.

B.B. Weldy Esq., Chester, Mont. Dear Sir:-

We note from the Havre Plaindealer that a county court house site has been offered free to Hill county, provided the city of Havre is chosen as the county seat of the proposed new county. Should Chester prove victorious in this contest for the county seat, as it logically should, we will donate to Hill county as a court house site the north half of block 13, Hamilton addition to Chester. This half block directly fronts the block of ground already donated by us to the city of Chester for a city park, and should prove a most desirable and ample location.

We place no conditions on this offer whatever, other than that Chester be chosen as the county seat. Wishing to offer as good inducements to Chester as have been made to Havre, and even better, we too will not only donate the ground, but will erect a building thereon, according to the specifications and plans of the county commissioners, or a committee appointed by them for that purpose, and lease same to the county upon terms and time hereafter to be agreed upon, with an option to purchase. Yours truly, Bourne & Hamilton

15 Feb. 1912 - County division election to be held on February 20th.

22 Feb. 1912 - VICTORY for County Division.
NO to Chester as County Seat.

29 Feb. 1912 - Telegram headline proclaiming Chester is now a part of the new HILL COUNTY. Hail! A Child is Born Helena, Mont. Feb. 28, 1912
B.B. Weldy, Chester. The child is born; Hill County is its name. Papers filed with the Secretary of State and Governor OK's them too. "Tolley" And we wish the youngster a most brilliant future.

14 March 1912 - J.F. Kavanagh was the first person to file a deed in the new county. The first Hill County wedding was Otto Waldo of Culbertson and Annie Henig of Havre.

26 Nov. 1914 CHESTER SIGNAL - It appears that a few persons in the proposed county of which we will have a part, have taken it upon themselves to select a new name. We are strongly against the renaming - let it be Marias!

Jan. 1915 - An article arguing for the creation of the new county with Chester as the county seat. The proposed new county, to be named PRAY COUNTY, not Marias, would have its western boundary at the eastern boundary of Toole County, would invade Hill county to the range line between ranges Eight and Nine, and would take another slice of poor old Chouteau.

29 January 1915 RUDYARD DISPATCH - PRAY COUNTY LAID TO REST!

28 April 1919 CHESTER DEMOCRAT - HILL COUNTY TO BE DIVIDED

The opening gun was fired last Monday night when at a meeting held in the Gem Theatre, the audience showed its willingness to go ahead and cut off from Hill County. Attorney McCabe opened the meeting with a talk outlining several of the many different reasons why a new county should be created out of the western por-

tion of Hill. Among them he mentioned the incontrovertable fact that it took considerable of a man's money every time he was to travel to the county seat 63 miles away, thereby paying indirect tax that in the aggregate amounts to many thousand of dollars each year. Also the time required has been a serious drawback. He outlined in a concise way the method that must be used under the new county division law, 58 per cent of the registered voters that voted at the last general election being required as signers to the petitions to be presented to the board of county commissioners.

The town of Lothair was well represented by J.R. Stille, banker, C.B. Bentson, merchant, R.M. Wilsie and I.N. Hovde. All spoke heartily in favor of division, and Messrs. Bentson, Stille, and Hovde used the taxation argument in favoring of the same. It is a well known fact that taxes are not alike in all counties, but why they should be so much higher in one than in the neighboring county is hard to understand. Farms lying on the boundary line of Toole and Hill counties can have the same value, yet show a difference in tax of many dollars. H.J. Thurman, a farmer living south of Lothair was called to the stage, and he let it be thoroughly understood that he was in favor of the proposed county. It is reasonable to expect that where communities lie so far from the seat of administration; little or no attention will be given them. We know that they have good roads down toward Havre, and we also know what roads and bridges we have here.

Toole county is a comparatively new county, but taxes have always been lower there than here by a great per cent. It does not necessarily cost more to administer a small county than a large one, and the money spent will benefit all.

At a former meeting a committee was appointed to look into the legal phase of the proposed division and report back at this meeting. The report shows that the valuation of the proposed county will run from \$4,500,000 to \$5,500,00; and will have an area of approximately 1800 square miles. Petitions have been drawn up and will be circulated immediately as no time should be wasted in bringing it before the county commissioners.

The lines of the proposed county are substantially as follows and may have been since changed. The eastern border of Toole county, the international boundary west to the range line between 7 and 8 east; south to the Chouteau County line, into Chouteau county 6 miles, west 24 miles, taking 4 townships from northern Chouteau county, then north 6 miles; and east 6 miles to Hill-Toole boundary line. It will contain 40 townships.

The name of the new county will be Liberty County, a name suggestive of what the tax payers actually want. And there is no valid reason why they should not have it. By getting together on this thing it can and must be put across, and everyone knows it will be a lasting benefit to all. Believe in self-determination so far as conditions will permit.

5 June 1919 HINGHAM AMERICAN - A public meeting was held at Hingham Tuesday last when representatives from different parts of the county met and formed a central committee to carry on the work. The new County was named "Victory" by an unanimous vote of those present at the suggestion of D.A. Crites of Gildford.

26 June 1919 HINGHAM AMERICAN - LIBERTY COUNTY HAVE FILED THEIR PETITIONS:
VICTORY COUNTY WILL BE NEXT!

Why Hingham and Chester are singled out as county seat aspirants, I quote the father of the move, McKay, -"I shall deliver Hill County of a pair of healthy twins and you can place one cradle in Hingham and the other in Chester".

July 1919 HILL COUNTY LEADER (Joplin) - Most of the Chester business contingent spent Sunday with the Inverness business folk securing withdrawals from petitions for county division in Range 8. This will leave the east line of Liberty county on range line between 7 and 8 and assures Chester of the county seat.

20 June 1919 NOTICE

In the Matter of the Creation of Liberty County, Montana:
Notice is hereby given that a petition has been presented to the Board of County Commissioners - said petition will be heard July 10, 1919.

24 July 1919 HINGHAM AMERICAN - COUNTY DIVISION RESULT OF COMMISSIONERS FINAL HEARING. After a hard keen fight the east boundary of Liberty County has been fixed between ranges 7 & 8. The county as originally proposed, included Range 8 but the inhabitants of that range petitioned the County Commissioners to have their territory excluded. To make matters more interesting Range 9 presented a petition to be included in the proposed county and until the day of the hearing these two ranges were petitioned backwards and forwards until it was reported that one man had signed nine times.

The Commissioners were unable to decide whether ranges 8 & 9 should be included or excluded from Liberty County and so they referred the matter to States Attorney Ford, who promptly and rightly, we think, decided that the Range 8 petition should be acted on first thus making the petition from Range 9 null and void.

17 Oct. 1919 - VOTE FOR LIBERTY COUNTY ON NOVEMBER 4TH!

6 Nov. 1919 CHESTER DEMOCRAT - Full Set Officers Elected by Voters of Liberty County. Will Be Ready to Take Office When Governor Proclaims New County is Created. Liberty County, the 51st division of Montana to be created, will come into actual existence as soon as a proclamation can be issued by Governor Stewart, subsequent to the canvassing by the commissioners of Hill County of the vote at Tuesday's special election and the certification of the returns to the governor.

The election which will serve to divide Hill county and to take therefrom its western half, decided the question of creating the new county by an almost two to one vote. A similar majority was obtained by Chester in the designation of the County seat. The town of Joplin voted strongly against the proposition and was about the only precinct which went against it. Officers who will serve until the next general election, were selected as follows:

Commissioners - W.K. Earl, W.J. Wallace and W.R. Watters, the latter a present commissioner of Hill county.
Clerk of the District Court - George Gau of Joplin.
Clerk and Recorder - Colonel Squires of Lothair.
Treasurer - Perry Oakley of Chester.
Sheriff - John Morgan of Whitlash.
Assessor - Carl Jepperson of Hill.
Surveyor - Logan McDonald of Lothair.
Attorney - B.R. McCabe of Lothair.
Supt. of Schools - Miss Nellie G. Poland of Lothair.
State Senator - J.R. Beebe of Lothair.
State Representative - F.J. Erickson of George.

7 Nov. 1919 COUNTY OF LIBERTY IS CREATED, CHESTER THE COUNTY SEAT.

13 Nov. 1919 CHESTER DEMOCRAT - LIBERTY COUNTY

The voters residing in the new county of Liberty on Tuesday showed their determination to have the seat of government closer home by polling a vote of about 75 per cent majority for division and for Chester for county seat. Every precinct in the county but Joplin and Alma, were heartily in favor of the move. There were 902 votes for and 329 against and Chester received 890 for county seat and Joplin received 342. The said County of Liberty contains within the limits thereof, Township 28, of Ranges 3, 4, 5, 6 and the $W\frac{1}{2}$ of Township 28 of Range 7, (formerly a part of Chouteau County, Montana), and Townships 29, 30, 31, 32, 33, 34, 35, 36 and 37, of Ranges 4, 5, 6 and 7 (formerly a part of Hill County, Montana), and which was formerly a portion of Chouteau County, Montana until its organization February 29, 1912.

This ends the third campaign for division on the part of the residents of the new county. But the time was ripe for division. The committees on division had the best co-operation from everyone, and the willingness on the part of all to work together put it across in fine form. Dan McKay, of county division fame, was here again during the last week of the campaign and held meetings wherever possible. His thorough knowledge of county matters was a big factor in the operation.

The County of Liberty will come into being ninety days after the Secretary of State has received a copy of the certificate of election. The county commissioners, Wm Watters, Tiber; Wm Wallace, Whitlash; and Wm G. Earl, Marias with the Clerk and Recorder, Colonel Squires will meet within five days after the Hill county commissioners have canvassed the vote and forwarded the certificate of election which will be from the 12th to the 15th of this month. The commissioners will then convene, organize and proceed to start the business of the new county.

5 Dec. 1919 - NOTICE

Notice is hereby given, that the County Commissioners of Liberty County, Montana will receive bids for the transcribing of the records of Chouteau County and Hill County, Montana up to the 12th day of December 1919 at 10 o'clock a.m., at which time said bids shall be opened. Bids must be for the entire transcribing of such parts of the records of Chouteau and Hill County as relate to or effect property or the title thereof situated in Liberty County and shall be sealed in an envelope and addressed to the County Clerk of Liberty County, Chester, Montana. All bids to be endorsed "BIDS FOR TRANSCRIBING RECORDS". The right to reject any and all bids is hereby reserved.

ATTEST: Colonel Squires, County Clerk

W.F. Watters, Chairman
Board of County Commissioners

19 Feb. 1948 - LIBERTY COUNTY and LIBERTY COUNTY ABSTRACT COMPANY both became 28 years old February 11. Liberty County was formed on that day in 1920, and the Abstract Office began keeping records the same day. Of the officers who were in the county in 1920, only County Assessor, Karl Jeppesen and Clerk of Court, George Gau are still holding office.

The original owner of the Liberty County Abstract Company was Harry Maynard, who later sold the business to George Chambers, the present owner. At this time, Robert Good is the manager of the office.

THE COURT HOUSE

5 Dec. 1919 CHESTER DEMOCRAT - Arrangements have been nearly completed for the lease of the brick building, part of which was occupied by the Lee R. Crowell Co., the other half by Henry Schneider's grocery and meat market for the county court house purposes. The building is a good one, is ideally situated and will house all the officers in splendid shape. Furniture and steel have already been ordered and will commence to arrive within a few weeks. It is understood that the old school house will be remodeled and used for the court room.

26 Dec. 1919 - LIBERTY COUNTY STARTS OUT OF DEBT

A.C. Strode returned from Havre and Fort Benton last week, having served on a committee with Judge H.H. Ewing of Great Falls and O.G. Skylsted of Havre to determine the indebtedness of Hill and Chouteau counties, and to name the amount which Liberty county will bear as its proportion. The commission found that Liberty County shall assume \$12,933.00 of bonded indebtedness from Hill, \$1,200 on steel bridges, \$1.00 for city jail at Chester, \$5,086.77 for road machinery, \$138.48 election expense, making a total due Hill County of \$19,359.85. To Chouteau county this county must pay \$8,362.42, Chouteau's bonded indebtedness being \$754,000. To offset this sum which will be paid by this county, it will receive all tax monies paid from this county after November 9, which will total about \$36,000. It will also take over the delinquent tax list for this year and also for former years. It can readily be seen that the new county starts off with a credit balance of about \$8,000. The commission was in session about a week. It was necessary to hold sessions in each county seat interested in the settlement in order to have the available essential records.

9 Jan. 1920 - Soon as Liberty County becomes an official organization on Feb. 11, 1920, the Board will call a special seed grain election to be held about March 1st.

The Board of county commissioners have begun work on the court house and vaults. The interior of the building is receiving a couple of coats of paint and kalso-mine, and brick has arrived for the vaults. The vault room will be about 20x30, divided into three vaults, which will give ample space for the present. Laborers are at work this morning digging a trench for the walls and soon the brick will be laid. J.B. Hay is in charge of the work.

But only one side of the building will be remodeled at the time, the part vacated by Henry Schneider. The north half is yet in litigation, and no one can be found who has absolute authority to give a lease on it. The officers will no doubt be crowded for the present, but it is hoped that the other matter soon will be straightened out.

16 Jan. 1920 - On Wednesday of this week the contract for transcribing the records for Liberty County was let to Earl Bronson of Havre. Mr. Bronson is a very capable man for the work and intends to begin at once. It is thought that the work will require about 90 days time.

6 Feb. 1920 - Next Wednesday, February 11, Liberty County becomes an officially organized county and all the officers will take their respective places. The court house building is rapidly being put in shape and all will be ready with the exception of the vaults. The work on the vaults is being steadily pushed but owing to freezing weather on some days, the brick laying cannot be done.

13 Feb. 1920 CHESTER DEMOCRAT - LIBERTY COUNTY IS NOW OFFICIAL

On Wednesday, February 11th, 1920 Liberty County became officially recognized. The officers for the various offices were here on that day and took their oath of office. The court house is not yet ready for the occupants because of the lack of furniture, desks, filing cases, etc., but it is hoped that these will be here in a short time. In the meantime the officers are getting acquainted with their books and with each other. The following persons are now the official members of the Liberty County family:

Commissioners - W.F. Watters, Chairman; W.H. Earl, W.J. Wallace
Clerk & Recorder - Colonel Squires, R.J. Baumbach, Deputy
State Senator - J.R. Beebe
State Representative - Fred N. Erickson
Sheriff - John H. Morgan, Thos. Smith, Under sheriff
Clerk of Court - George H. Gau, Shebel Rehal, Deputy
Treasurer - Perry Oakley, George Shepherd, Deputy
Attorney - B.R. McCabe
Superintendent of Schools - Nellie G. Poland
Surveyor - Logan H. McDonald
Public Administrator - Thomas M. Brandt
Coroner - G.H. Layton

13 Feb. 1920 - BUSINESS MEN HOLD BANQUET

The business men of Chester thought it fitting that the opening official day of Liberty County be celebrated in some form, and to also meet with the official family, so on Wednesday evening at the Chester Cafe a banquet was held for that purpose. Fifty men and two ladies were seated at the tables which had been arranged and decorated for the occasion by some of the ladies of the town, and after a splendid dinner, one which we hope to have duplicated at some future time, Toastmaster, Senator J.R. Beebe, presented the different speakers in a very fitting manner. A program had been arranged and was closely followed out, but after the program most everyone there was called upon for something. Mr. A.C. Strobe, one of Chester's old-time business men made a short address of welcome, followed by a song by a quartette. We are not going to try to enumerate those who spoke, as that would include almost everyone present, but we do wish to mention that Judge Carlton, the newly appointed District Judge for this district of which this county is a unit, was present and gave a very interesting talk on the spirit of co-operation and he made it plain that without co-operation we would progress backwards. After the regular program, a vocal solo was especially well rendered by Mrs. J.H. Durand. The party broke up about midnight, and there is no doubt that all present felt that the get-to-gether spirit was really the only thing which will make Liberty County one of THE Counties of Montana.

20 Feb. 1920 - COMMISSIONERS' PROCEEDINGS

The first meeting of the Board of County Commissioners of Liberty County was held in the office of County Attorney Elect, B.R. McCabe at the First State Bank building, Chester, Montana, the county seat of said Liberty County on Saturday, November 15th, 1919.

Commissioners present were W.H. Earl, W.F. Watters and Wm J. Wallace, together with County Attorney Elect B.R. McCabe and Colonel Squires, Clerk.

The Board immediately proceeded to take the oath of office and tentatively organize. Upon motion of Wm J. Wallace, seconded by W.H. Earl that W.F. Watters be nominated chairman. Clerk called for the vote, Wallace voting "aye", Earl voting "yea". Watters not voting, where-upon the clerk declared W.F. Watters duly elected chairman. Bids for furniture, fixtures and vault doors was acted upon.

20 Feb. 1920 CHESTER DEMOCRAT - The first child to be born and registered in Liberty County was a son to Mr. and Mrs. Jacob Schafer, on February 11, 1920 at 2:24 a.m. and the proud parents have christened him, Leon Liberty Schafer. Long may he live and enjoy the meaning of his given name.

ELECTION PROCLAMATION and Notice of Special Election by the Board of County Commissioners of Liberty County, Montana - Wm F. Watters, Wm H. Earl, Wm J. Wallace Do Hereby Proclaim that on Saturday, the 28th day of February, 1920 incurring indebtedness not exceeding \$150,000 for the purpose of purchasing seed grain, feed, provisions and other necessary supplies to be furnished and supplied by the county to its inhabitants who are financially unable to procure the same and who have been reduced to such condition by reason of drouth, hail or other unfavorable climatic conditions. Polls will be open from 8 a.m. to 6 p.m.

Precinct	Name	Location of Polling Place
#1	Lytle	School House, Sec. 25, Twp 28, Rge 3
#2	Thorsen	School House, Sec. 24, Twp 28, Rge 4
#3	Earl	Selma School House, Sec. 13, Twp 28, Rge 6
#9	Joplin	Joplin School House
#15	Alma	Tingdahl School, Sec. 28, Twp. 36, Rge 7
#14	Laird	Osler School House
#10	Prescott	Bunk House, Prescott's Ranch
#8	Chester	Old School House
#5	Pugsley	Erickson School
#6	Beatrice	Timber Coulee School House
#7	Lothair	Ballou's Hall
#11	Trommer	Trommer School House
#13	Whitlash	Hall at Whitlash
#4	Prairie	Polish School House, Sec. 33, Twp 30, Rge 7
#12	Hill	Hill Post Office

Miss Lillian Houske has taken a position in Assessor Jeppesen's office. Al A. Cameron will be Deputy Assessor here - had formerly been at Havre.

27 Feb. 1920 - Commissioner Proceedings-
Architect for arranging office rooms in Schneiter building - M.G. Ellinger, Havre
Insurance - J.O. Berglin
Relief and Seed Grain applications reviewed.

12 March 1920 - After being in special session the past ten days the Board of Commissioners adjourned Tuesday having passed over 400 applications for relief. Miss Lizzie Muir is now employed as one of the clerks in the Clerk and Recorder's office.

County Commissioner appointments -

Glen Shepherd, Deputy treasurer
R.J. Baumbach, Deputy clerk & recorder
Shebal Rehal, Deputy clerk of court
Thos. Smith, Under sheriff
Lillian Hauske, clerk in assessor's office \$100
Doris Squires, stenographer in recorder's office \$110

9 April 1920 - The Board of Commissioners at Tuesday's meeting made arrangements to lease the A.C. Strode store building for a term of three years, and will convert the same into a court house. The present quarters are by far too small for the offices in that building, with no court room, jail or other necessary rooms. The Strode building is 60x72 and divided into three compartments. The

south compartment which is 16x72, will make room for the Sheriff's office, jailer's bed room, and a number of cells. The north side will be used by the county attorney, two rooms, jury room, witness room, and Judge's chamber. The center portion, 28x72, will be the court room. The building will be put into shape at the expense of Mr. Strode and will be ready for occupancy by September 1st.

We believe that the county is very fortunate in securing this building, as it solves the office problem in a very satisfactory way. The rent \$150 per month, will offset the cost of a jail, should a jail have to be built in a separate unit. It gives the county a court room, and its needed prerequisites, and offices for the county attorney which are now maintained in a separate building.

16 April 1920 - Civil suits always identify the Court house as the Schneiter building.

18 June 1920 - Miss Mary Watson has completed her work at the court house where she has been indexing chattels and liens from Hill and Chouteau counties to the Liberty County records. She returned to her home at Havre Thursday.

9 July 1920 CHESTER REPORTER - The big 3½ ton Federal truck and wagon purchased by the county some time ago arrived here Tuesday. The truck is in fine shape and will be a big factor in reducing transportation costs of material and implements in the county.

16 July 1920 - J.B. Hay and Theodore Clausen placed a skylight in the Court House this week.

7 Jan. 1921 - Nearly 8 pages of delinquent taxes.

7 October 1921 CHESTER DEMOCRAT - At the last regular meeting, the Board of County Commissioners leased the north half of the Schneiter building and after putting it in shape will move several of the officers' quarters into that part. It is not yet decided as to the offices that will be moved but tentative plans are that the clerk and recorder, and treasurer will remain in the part now used. Ever since going into the south half of the building the offices have been so crowded that work from one office had to be done in another. The added space will surely relieve the congestion.

14 Oct. 1921 - J.M. Burkhart and E.S. Albright are busy repainting and kalso-mining the interior of the north half of the Schneiter building which will soon be occupied by county officials.

21 Oct. 1921 - E.S. Albright, J.M. Burkhart assisted by Janitor Fuller have completed painting the interior of the north half of the Court House and the carpenters will soon have full sway.

18 Nov. 1921 CHESTER REPORTER - At the last meeting of the Board of Liberty County commissioners the board granted the Ladies Athletic Club free use of the Court room for any community doings that may come up. Janitor Fuller will have charge of the room when it is being used. Use can be nullified at any time by the Board.

28 Nov. 1921 - Miss Mildred Woare was not able to attend to her duties at the Court House Wed. and Thurs. because of an attack of rheumatism. She is at work again today.

Jan. 1922 - Dear Sir: I have your letter of the 4th and I want to compliment you in selecting by petition Mr. T.P. Strode as your County Commissioner to succeed Mr. Watters, resigned, because as you and I both know, nothing can be said of Mr. Strode that cannot more than do him justice relative to his honesty and ability. I intend to see Judge Rose personally and recommend the appointment. I am very truly yours,
George B. Bourne, Vice-Pres. Havre (bank)

13 March 1924 - Court House Notes-Chester

A marriage license was issued by Clerk of the Court George H. Gau on Wednesday to Coleman Emery Williams from Spokane and Sarah Alice Brumbaugh from Gildford. Justice of the Peace, A.A. Pond performed the wedding ceremony in the presence of Witnesses Sigurd Amundson, deputy treasurer and Clarence Langley, deputy county clerk.

Judge Chas. A. Rose and Court Reporter, P.M. Moody attended to their regular duties in court here today this being Law and Motion day.

18 April 1924 - COMMISSIONER PROCEEDINGS

It was ordered that the following General Fund warrants be issued:

Matt Morgan, posting primary election notices	\$ 8.00
Perry Oakley, refund of personal tax	2.44
Mary Watson, final proof cards	6.90
E.G. Osler, posting notices of election	2.00
Wm Brouillard, posting notices of election	2.00
State Hail Insurance Board, refund interest	201.21
Leslie Oakley, posting notices of election	2.00
Fred N. Erickson, posting notices of election	2.40
M.E. Wood, posting notices of election	2.00
N.C. Thoreson, posting notices of election	4.00
Ina R. Keith, posting notices of election	2.00
Thomas Kinread, posting notices of election	3.00
A.H. Layton, posting notices of election	2.00
Underwood Typewriter Co., repaid on typewriter	15.00
Jacob Schafer, March salary janitor	100.00
Queen Insurance Co., premium on mill (flour)	120.00
Aileen Stronach, steno. clerk of court's office	16.00
B.R. McCabe, expense official business	27.84
Ida Rehal, printing election supplies	14.00
Ida Rehal, clerk in Supt's office	12.00
Ida Rehal, steno. clerk and recorder's office	25.60
Ida Rehal, printing commissioners proceedings	28.40
Ida Rehal, clerk in treasurer's office	4.00
P.A. Greiner, posting notices of election	2.00
S.A. Amundson, clerk in treasurer's office	115.00
Aileen Stronach, steno. clerk and recorder's office	8.00
George Ainley, telephone rent	40.00
P.J. Moody, mileage	5.70
Chester Trading Company, supplies	2.25
E.J. Blanchard, drayage	5.25
Ethel M. Greiner, clerk in assessor's office	26.53
Karl H. Jeppeson, traveling expenses assessor	48.63
W.H. Melvin, health officer for March	50.00
Chester Cash and Carry, supplies	20.25
Bender-Moss Co., part payment on books	15.00
A.C. Strode, court room rent for April	100.00
P.M. Kuhry, clerk in assessor's office	44.23
Bender-Moss Co., books	12.50
A.A. Pond, clerk in assessor's office	8.86
Clerk and Recorder, refund to petty cash	124.04
Queen Insurance Co., repayment of county check	202.14

Poor Fund -	J.M. Burkhart, refund of bachelor tax	\$ 9.00
	E.G. Albright, work for poor	17.00
	Helen Schwab, mother's pension for March	20.00
	Mary C. Heimbigner, mother's pension for March	25.00
	Emma Roboweitra, mother's pension	25.00
	Bronslawa Kurtz, mother's pension	30.00
	Margaret E. Wood, mother's pension	40.00
	Chester Trading Co., supplies for poor	24.55
	Mrs. E.C. Lund, care of poor	77.00
	Mary D. Osler, old age pension	25.00
	W.H. Melvin, county physician for March	150.00
	J.K. Clausen, supplies for poor	12.50
	Ben Strickler, old age pension	25.00
Road Fund -	E.R. Furlong, blacksmith work	5.25
	Chas. Swank, road work	32.00
	C.C. Cartlich, per diem & mileage county surveyor	217.50
Gopher Fund -	John M. Shettel, gopher bait oats	24.00
	Chester Trading Co., poison for gopher bait	75.00
	John K. Clausen, gopher poison	73.50
	Chester Cash and Carry, gopher poison supplies	2.25
	John K. Clausen, insect pest supplies	30.00
	Clerk and recorder, C.O.D. arsenic	59.60
	Clerk and recorder, refund to petty cash	31.24
Officers salaries for March, 1924 -		
	Shebel Rehal	150.00
	Clarence Langley	137.50
	Perry Oakley	150.00
	Karl Jeppesen	125.00
	George Gau	150.00
	B.R. McCabe	62.50
	John Morgan	166.67
	Matt Morgan	150.00
	Alpha E. Fitzpatrick	125.00
	Paul J. Moody	31.50
ATTEST:	Shebel Rehal, Clerk	W.H. Earl, Chairman

7 July 1924 - LIBERTY COUNTY COURT HOUSE WILL BE ENLARGED TO SAVE RENT
Many of the matters of great interest to the taxpayers were taken care of by the Board of County Commissioners at their regular session beginning on July 7th and continuing until the 9th. But none were of more importance than the decision arrived at to remodel the present county court house and add another story to the same. This will do away with the necessity of renting the old A.C. Strode store building and effect a great saving of money within a very few years. County Clerk, Shebel Rehal has figured out that it has cost Liverty County in rent alone, just \$7,066.68 for the use of this building since the county was organized in 1920. The improvements can be made for less than \$10,000 and at this rate it should pay for itself in a few years.

Members present were: W.H. Earl, Chairman; T.P. Strode, A.A. Klingel, Comm.; and the clerk, Shebel Rehal. Mr. F.F. Bussuot, an architect from Havre, Montana was summoned before the board, and the matter of constructing a second story to the court house and the building of a jail was discussed with him and after due consideration it was ordered that Mr. Bussuot prepare plans and specifications and submit same to the board July 15, 1924 for their approval.

15 July 1924 LIBERTY COUNTY FARMER - Frank Bossout, architect from Havre, had the blueprints with him for the second story of the court house building. He was in session with the commissioners on Tuesday.

22 Aug. 1924 - ROAST FOR COUNTY COMMISSIONERS

The editor of the Chester Reporter vents considerable spleen upon the Board of County Commissioners for letting the contract for the addition of another story to the present court house building and the erection of a jail building, trying to make it appear that there is no demand for this money-saving improvement.

Reading his article in last week's paper, we are led to believe that the commissioners neglected to ask Mr. Woare's advice on the matter. Just to become informed about the taxpayers of Liberty County and as to just where Mr. Woare stands in this regard, we had a search of the records of the county made, and ascertained that the only real property standing in his name in this county are five lots which were transferred to him that he might qualify to run for the office of mayor of Chester the time that Dan Buhring, the drayman, beat him.

Disagreeing with The Reporter editor, we believe that the taxpayers of this county will endorse the action of the board of county commissioners in their recent action. They have proven themselves men of keen business acumen; so keen in fact, that when they stopped his overcharging for doing the county printing, they aroused his animosity to such an extent that he condemns every act of the board - but his knock is a boost. The record of the administration of the present Board of County Commissioners, as well as of the other officials of the county, is one that will, we think, commend itself to every fair-minded, serious thinking taxpayer in the county, and they are now before the voters of the county upon this record.

31 Oct. 1924 LIBERTY COUNTY FARMER - ADDITION TO COURT HOUSE TURNED OVER

The new county court house is completed and will be turned over to the county by Contractor Lou Ekstrand next Saturday, November 1st. Some of the county officials have already moved into their new quarters and things are becoming normal again. When one remembers that Liberty County has paid out for rent in the last four years a total sum of \$7,066.68 in rent for the use of the old A.C. Strode store building, it would appeal to the most obtuse that the new building was a real stroke of economy, and a fitting climax to two years of really efficient and honest administration.

January 1926 - NOTICE OF TAX SALE - 1925

NOTICE is hereby given that the 1925 Delinquent Tax Sale will be held on Jan. 23rd, 1926, at 10:00 a.m. at the front door of the Court House at Chester, Montana on all the delinquent property in Liberty County upon which delinquent taxes are a lien will be sold at public auction, unless prior to said time said delinquent taxes, together with all interest, penalties and costs due thereon are paid: THAT a complete list of all persons and property in the county, now owing taxes is on file in the office of the county treasurer and is subject to public inspection and examination. Perry Oakley, County Treasurer in and for Liberty County, Montana.

16 Oct. 1925 *Out of Sequence - George Shepherd appointed Justice of the Peace for Chester Township.

26 Jan. 1926 - DIRECTIONS AND FORMULA FOR POISONING OF JACK RABBITS FURNISHED BY SHEBEL REHAL, COUNTY CLERK & RECORDER, CHESTER, MONTANA.

3 Feb. 1926 - It was ordered that a ventilating system be installed and connected with the north side furnace of the court house building.

16 July 1926 - Lucille Kossel has completed her work in the assessor's office. Merle Schoonover is employed by the Clerk & Recorder this week.

Miss Elizabeth Ness is working in the County Superintendent's office. She is making out the state reports.

Election candidates - Sheriff - Wm Silberman
Dodds Keith
John Morgan
Tommy Smith

State Representative - Leonard Plank
County Treasurer - Sigurd Amundson
County Superintendent of Schools - Mrs. Jay Ross

27 Aug. 1926 - George Gau, our popular Clerk of the district court, has purchased a new Ford sedan.

1 Oct. 1926 - According to Mr. Rehal's certificate there are a total of 1040 voters registered and eligible to vote at the coming general election in Liberty County.

7 Jan. 1927 - Liberty County began business on Monday, January 3rd, with the new county organization right on schedule.

Verne P. Sauer of Joplin, who had been in the Dakotas on business connected with the leases for oil in townships 33 and 34, returned home on New Year's Day and on Monday was sworn in as county commissioner for a six year term succeeding A.A. Klingel of Alma. The commissioners organized with the selection of Mr. W.A. Earl, former chairman, as chairman of the present board - a fitting tribute to Mr. Earl, who has served long and well in that capacity.

Dodds Keith took over the duties of sheriff of the county succeeding John H. Morgan, who has held the office since the formation of Liberty County, and who retires with a record of efficient and thoroughness of which all his friends are proud. Al Coon of Chester has been appointed by Sheriff Keith to act as under sheriff.

Attorney J.H. McAler assumed the duties as county attorney, succeeding Hawley Wymond who has filled the office for the past two years. Mr. Wymond has returned to Joplin and will reopen his office.

Shebel Rehal succeeds himself in the office as county clerk and recorder, as provided for by the statutes in the case of a tie vote for an office, the incumbent retains the office until his successor is duly elected and qualified.

Miss Evelyn Jensen of Joplin, is superintendent of schools. Miss Jensen has held the office since last September under appointment to fill the unexpired term of Mr. Fitzpatrick who resigned to accept a teaching position at Lothair.

Karl H. Jeppesen succeeds himself as county assessor again. Karl is a most competent official and everyone in the county knows it.

There were no other changes in any of the offices. County Treasurer Perry Oakley's term does not expire until March 1st, when he will be succeeded by True Ray elected at the recent election.

George H. Gau's term has still two years to run as Clerk of the Court.

29 June 1928 - A total of 956 people in Liberty County are entitled to vote at the coming primary and special election on the Marias bridge proposal.

3 Aug. 1928 - Lightning struck the southwest corner of the Liberty County court house about 6:00 a.m. last Sunday. Brick and mortar was thrown over the sidewalk, but no serious damage was done to the building. Mightly close call for our old print shop, as it only lacked about three feet of the electric bolt.

28 Sept. 1928 - 114 additional voters for Liberty County.

18 Jan. 1929 - Commissioner Proceedings:

Floor in certain parts of the court house is in bad condition - repairs to be made.

Recording typewriter in clerk's office is worn out, ordered to purchase a new one.

A.R. Coon appointed deputy sheriff.

24 Jan. 1930 - B.A. Price appointed as Liberty County health officer - approved.

22 May 1930 - Helen Laird is working in the county clerk and recorder's office.

20 Nov. 1930 - Mrs. Harry Greiner has put in an application for county treasurer for the months of January and February 1931.

A marriage license was issued by Clerk of the Court George H. Gau on Sat. afternoon, November 8th, 1930, to Victor B. Strissel of Rudyard, Montana and Gayetta B. Freid, of Inverness. The marriage ceremony was performed by Mayor George E. Chambers at Chester. The witnesses were Misses Catherine Minckler and Aileen Stronach.

11 Dec. 1930 - Dr. Hough received the contract for taking care of the county poor and sick. The bids were opened Tuesday instead of Wednesday, the 3rd and the third day, the time set for hearing and Dr. Price asked for the return of his original bid and wanted to put in a new bid. Dr. Hough's original bid was \$1500.00 while Dr. Price's original bid was \$2400.00 and his last bid was under the original submitted by Dr. Hough.

A.E. Babcock received the contract for the county printing, no other bid being presented.

Mrs. Harry Greiner was appointed as county treasurer, to fill out the unexpired term of True Ray for January and February, 1931. She has not made known whom she will have to help her during the two months.

18 Dec. 1930 - Selmer Kolstad is working in the office of County Treasurer, True Ray at the present time, to help take care of the extra amount of work on hand.

19 Feb. 1931 - INTERNAL REVENUE OFFICER AT CHESTER MARCH 5TH

An Internal Revenue officer will be at the Court House at Chester, Montana on Thursday, March 5, 1931 for the purpose of assisting taxpayers in preparing their income tax returns. This service is furnished gratis and no doubt will be appreciated by the taxpayers of Liberty County.

5 Feb. 1931 - OUR CLERK OF COURT AND RECORDS OF HIS OFFICE

George H. Gau, Clerk of the District Court received fees totaling the sum of \$500 for the month of January 1931. This is the largest amount of fees received during any month since the creation of Liberty County. Seven civil actions and four probate actions were filed during the month along with two marriage licenses having been issued.

15 April 1927 LIBERTY COUNTY FARMER - LIBERTY COUNTY'S WARM WINDS MAKE
MARRIAGE PLEASANT

A special dispatch to The Great Falls Tribune from the county seat says:
"According to figures compiled by George H. Gau, clerk of the district court in Liberty County, only five divorces have been granted in this court in the seven years of the county's existence. Local parties recommend residence in Liberty County to disgruntled spouses rather than in Nevada. Mr. Gau believes that the warm winds which move across the undulating prairies in the county are conducive to marital peace and contentment.

27 April 1927 - Commissioner Proceedings - Misc. items

Mr. George Hess appeared before the board and requested the renting of what is known as the Hess building which is now county property, and his request was granted and it was ordered that \$6.00 per month be charged as rental for said building.

The bid of Walden Bros. to install an inside privy for the jury room for \$510 complete was accepted.

Mr. Ed Furlong, Marshal of the Town of Chester appeared before the board presenting a resolution that the building on Lot 16 Block 6 of the Original Townsite be condemned and ordered torn down.

Mr. Arnold Olson requested the renting of the building now occupied by the Chester Reporter which was acquired by the county by Tax Deed and it was allowed to be rented for \$15.00 per month.

Robert Thompson, 8th grade exams	\$.39
Simon Warrington, removing dead horse	8.27
B.A. Price, health officer for March	41.00
Art Norris, cleaning out culverts	4.00
John Roke, opening culverts	4.90
Peter Greiner, fixing culverts	3.00
John Staudacher, road work	6.00
John Keldrauk, road work	18.00

18 Feb. 1927 - Lucille Kossel has finished her work in the county treasurer's office.

15 April 1927 - MISSOULA-Harvey McLearn, city attorney of Chester and county attorney of Liberty county was recently initiated into Sigma Alpha Epsilon, State University of Montana social men's fraternity.

22 July 1927 - COUNTY CLERK'S OFFICE BUSY The office of the County Clerk & Recorder, Shebel Rehal, is one busy place these days. The office is working a night shift in order to keep up with the rush incidental to the work connected with taking of tax titles by the County for past due taxes. Since this work was started a few months ago, a total of \$7,000.00 has been collected. All efforts are directed against lands held by mortgages and not a resident farmer has been disturbed.

29 July 1927 - The Board of County Commissioners met in regular session on the 6th day of July at 10:00 o'clock a.m., members W.H. Earl, Chairman; T.P. Strode and Verne P. Sauer, commissioners and the clerk, Shebel Rehal.

Persuant to the provisions of Chapter 121, Session Laws of 1927 it was ordered that the following meat inspectors be appointed:

The Sheriff - Chester and vicinity
Thos. M. Brandt - Joplin and vicinity
Peter A. Greiner - Lothair and vicinity

Since the creation of Liberty County, 1430 cases have been filed; 166 probate cases and 98 marriage licenses have been issued. Thirty four criminal cases have also been filed. Twelve mother pensions have been issued.

George H. Gau has been Clerk of Court since the creation of Liberty County, Montana and took over the office February 11th, 1920. Mr. Gau was a resident of Joplin before going to Chester. He came to Joplin in the year 1913 and homesteaded north of Bison. He worked with Joe Einerson, our present merchant, for three years with the Joplin Drug Company store and spent one year in the Army. He once owned and operated the Club Cafe, which place is now operated by Mrs. C. Freeland. Mr. Gau married Golda Marshall in June, 1918 and they have four children.
(LIBERTY COUNTY FARMER)

7 May 1931 - Ben Ish, second trick operator at the depot, was circulating a petition asking that the county commissioners do not cut the salary of Jake Schafer, janitor at the Court House. Previously a delegation of taxpayers called at the office of the county commissioners and as a result the janitor job was put up to a bid. So far, four have been sent in for the position - Harry Heimbigner, Merle Oakley, Wm Marshall and Jake Sekora. All that is needed in this county is to start something and then the petitions are all in circulation for and against.

31 July 1931 - RESOLUTION OF THE TAX PAYERS ASSOCIATION TO THE BOARD OF COUNTY COMMISSIONERS. We, the Liberty County Tax Payers' Association in regular meeting assembled to take this opportunity to assure your board that it is our aim and purpose to co-operate with you in any matter for the best interests of this county.

WHEREAS, the janitor job in the county court house is a public and common labor job, we believe it should be open to married and single men alike, giving the preference to married men when other things are equal. You have the same right to let this job out for bids, as the United States government or postoffice department has in letting the stage route to the lowest bidder. The time has not yet come when we have the right to discriminate against single men. If you are going to keep the single men out of the public jobs then we say, also, take all single men out of office from the vice president of the United States on down.

If Jacob Schafer is entitled to a bonus of twenty-five dollars per month just because he is a married man with a family, what about other married men with families, who cannot get a job that pays a bonus of \$25 and have to pay taxes to help pay these high wages.

SECOND - That we ask the Board of County Commissioners to re-consider their action when they employed Jake Schafer at a salary of ninety dollars a month. And accept the bid of the lowest bidder, who is capable of doing the work. A citizen, a resident of this county and otherwise qualified, or reduce the salary to seventy dollars per month as previously requested by this organization.

THIRD - That we ask the Board of County Commissioners to reduce the salary of all clerks and stenographers in the various offices to sixty-five dollars per month. This being in line with what others are paying for similar work.

We ask that you make this Resolution a part of your minutes.

Witness our hand and seal this 20th day of June, 1931.

Committee: Ed Tempel, W.H. LaValley, Fred Daleen

ATTEST: R.J. Miller, Secy-Treas. Tax Payers Association

3 Sept. 1931 - County Clerk - John W. Hutchison
County Treasurer - A.R. Coon
Deputy Co. Clerk & Recorder - Clarence Langley

19 Nov. 1931 - Mrs. Harry Greiner working as extra help in the county treasurer's office. Miss Minckler is working as extra help in the county clerk and recorder's office.

8 Oct. 1931 LIBERTY COUNTY TIMES - Most of the crossings at the Court House are completed by Contractor J.B. Hay and the crew will move over to the crossings at the Chester Trading Company.

7 Dec. 1931 - PROCEEDINGS of BOARD of COMM. (Partial)

Sixteen of the batteries comprising the Court House light plant were sold to Martin Skor for \$90 cash. The remaining batteries were sold to Wilbur M. Cavitt for \$90 - \$30 in cash, and the balance due Dec. 1st, 1932 with interest at the rate of 6 per cent, title to the batteries to remain in the County until balance is paid. The motor, dynamo and board of the county light plant were sold to Wilbur M. Cavitt for \$95 - \$35 cash, and the balance due October 1, 1932, with interest at the rate of 6 per cent; title to remain in the County until balance paid.

The clerk was ordered to buy a new typewriter for County Superintendent, Evelyn Jensen.

21 July 1932 - The resignation of Edward Rockman as official gopher poisoner was received and accepted by the Board of Co. Commissioners.

19 Jan. 1933 - County Commissioners asked permission to put in auto passes at ends of section lines.

28 June 1934 - Mrs. James Ried of Bison, Florian Kuhry and Lloyd Shepherd are helping out at the court house.

23 May 1935 - Comm. Proceedings: (Partial)

GENERAL FUND

County officers, April salaries	\$ 1122.67
Montana Power Company, electricity	11.90
Georgia H. Whipps, court reporting service	9.00
B.F. Branahan, auto reference book	1.98
E.A. Bathke, labor	1.00
Thos. F. Walker, laboratory test	75.00
Elvina Keldrauk, stenographer	21.00
Helge Rockman, witness fees	3.00
August Schultz, supplies	4.65
Elizabeth H. Reid, clerk	90.00
Anna S. Harvey, stenographer	90.00
Geo. H. Gau, burial Hawley Wymond	150.00
Chester Telephone Co., rent and calls	20.05
Clarence Kolstad, special deputy sheriff	4.50
Jacob Schafer, janitor	90.00
Otto Fossen, special deputy sheriff	27.00
Town of Chester, water	4.65
Helen Fenzl, stenographer	13.00
Dr. Lande, health officer	66.66
Dodds Keith, mileage and expenses	51.60
Lucille Lyders, clerk	75.00
Lee Violet, oats	7.15

4 Jan. 1937 - Comm. Proceed. The Board of County Commissioners of Liberty County, Montana, met in regular session this day at ten o'clock. There were present B.A. Poppler, Hilmer Johnson and Russell F. Keith, commissioners and John W. Hutchison, Clerk.

21 Jan. 1937 - The new hardwood floors in the Court House are a great improvement.

28 Oct. 1937 - Miss Theresa Oraw is helping out in the office of the Wheat Allotment at the Court House.

25 May 1939 - The county is seeding the lots just south of the Court House to grass, and expect to eventually develop a small park and recreation center.

27 July 1939 - A new coat of paint is being given the Court House on the sides and rear, the roof is being repaired, and the jail will be repainted.

21 Sept. 1939 - **DAMAGED BY FIRE** Complete destruction of the Liberty county Court House was narrowly averted Sunday afternoon, when a blaze of undetermined origin started in the hall-way leading to the basement from the first floor, and before it could be extinguished had enveloped the entire space of the hall and was rapidly spreading to the main floor.

The fire was discovered by Sylvia Schafer, daughter of the custodian of the building, Jake Schafer, who happened to be out of town at the time. Miss Schafer, who happened to be working in one of the offices on the first floor, smelled the smoke, and quickly discovered that the fire was in the basement hallway. She turned in the alarm, and within a comparatively short time help arrived, and the Chester fire department was on the job within a few minutes. The flames had reached such proportions that it was necessary to turn on water, which caused most of the damage. The fire occurred about four o'clock in the afternoon, and had it not been for the fact that Miss Schafer was in the building at the time the entire structure and its contents would probably have been destroyed.

The cause of the blaze is a mystery. An examination of the room in which the blaze started indicates that the origin was on the south side of the basement hall, on the wall between the basement hall and the hall on the first floor. At this point an oil mop was hanging on the wall, and several boxes of inflammable materials, including boxes containing paper rolls and some electric light globes. It is thought possible that the blaze might have started from spontaneous combustion of the oil mop, or perhaps a mouse might have in some way started the fire in one of the boxes. There was no indication that the fire started in the basement room.

Most of the loss, which is estimated at not more than two thousand or twenty-five hundred dollars, was caused by water and damage to the walls and ceilings. Some of the walls will have to be re-plastered, and a considerable amount of repainting and kalsomining will have to be done. There was no great amount of damage to the contents of the building, but the timbers and finishings in the hallway were badly charred.

The loss is covered by insurance. The insurance adjuster had not arrived to determine the full amount of the loss on Thursday morning, but is expected before the end of the week.

29 Sept. 1939 - Work was started this week repairing the damage at the court house caused by the fire of Sunday, Sept. 16th. The insurance companies are paying for the repair work, which consists of laying some new floor, plastering and refinishing some of the walls, and repainting some of the ceilings.

8 Jan. 1942 LIBERTY COUNTY TIMES - Work was started this week installing the new heating plant in the Court House. Workmen have kept most of the offices in an upset condition and the federal officers and their clerks will be glad when the job is completed.

13 Feb. 1945 - TOO BAD! The girls of the Liberty County Court House crew were greatly grieved and slightly peeved that the bill regarding Saturday-off for county employees was killed or died a natural death in the Senate of the Legislature.

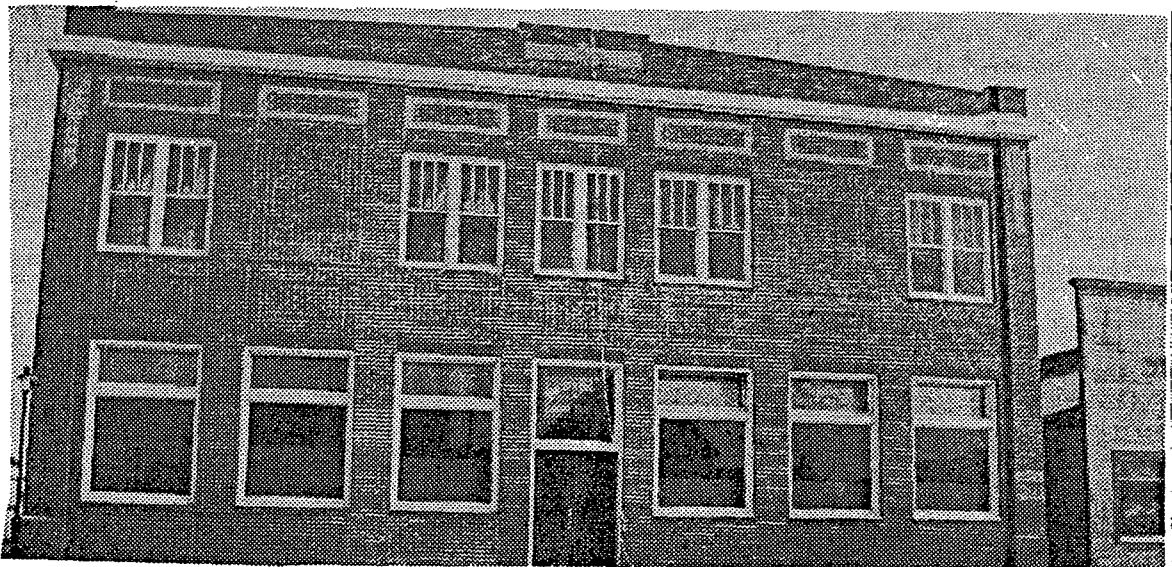
16 June 1949 - \$35,000 IMPROVEMENT PLANNED FOR COURT HOUSE
A 60x30 two-story addition will be built. The two-story addition will extend 30 feet south of the present building. It will house clerk and treasurer vaults and a meeting room for county commissioners. Second story space will be utilized by the Clerk of Court, ACS office, and welfare office. Space in the jail addition will be used for women and juvenile cells and a sheriff's office.

22 Dec. 1949 - Mr. and Mrs. Bob Pantzer and family left for Livingston Friday where they will make their home. Mr. and Mrs. Darby O'Brien and family will move into their home.

Mr. and Mrs. James Hall of Shelby are moving here this week from Shelby. Mr. Hall will be our new county attorney. They will live in the Darby O'Brien home.

April 1953 - James Sargent began work as county agricultural extension agent in Liberty county April 20, 1953, marking the first time this county has had the services of a county agent.

18 Sept. 1958 - A crew began work this week giving the north side of the Court House a face lifting job. When they pulled off the old, cracked siding, local folks were surprised to learn that the building was once a business establishment: "LEE CROWELL CO., INC. GENERAL MERCHANDISE".



Liberty County Courthouse in 1924. To the right is the Chester Reporter which was moved across the street to the present site in 1932. Now known as the Liberty County Times. Notice the street light at the left side of the courthouse.

CITY & COUNTY GOVERNMENT

1 May 1889 RIVER PRESS - A CALL For Democratic Primaries & District Committee election to be held May 14th in Fort Benton, in Helena, July 4th. The Committee recommends that no precinct be represented at the convention except by delegates or alternates, residents of their respective precincts. Places of holding the election for the same, as follows:

Marias Solomon's store
Sweet Grass Hills Barnes' store

11 June 1890 - Among the registration districts and voting precincts and appointed registers by the county commissioners last Saturday include:

District No. 2 Marias Wolf's house Jas. D. Wolf, register

10 Oct. 1894 RIVER PRESS - Voting Precincts and Election Judges

Middle Butte - C.H. Murray, R.A. Barnes, George Hubble.

East Butte - Alex. Hamilton, T.P. Strode, C.R. Kellar

Chester - J. Cunningham, M. Cockrill, E.H. Nacey

Lucille - A.H. Barney, J.R. Cockrill, R.R. Lytle

Marias - Reuben Archer, J.H. Rowe, Chas. Lippard

17 Oct. 1894 - WHERE TO REGISTER:

Chester - H.F. Smith, at section house on October 19 and 20; will be at his home office at East Butte all other days.

Lucille - W.P. Turner, Sr., at his ranch every legal day.

Marias - Geo. D. Patterson, at Moses Solomon's house on Oct. 19 and 20. All other days at the court house, Fort Benton.

Middle Butte - H.F. Smith, on Oct. 12 and 13. All other days at his house in East Butte precinct, except on Oct. 19 and 20 when he will be at Chester.

August 1896 RIVER PRESS - The Republican electors of Chouteau county are requested to meet at the several precincts on Sat., Sept. 5th, 1896 for the purpose of electing delegates to the county convention.

Chester - Weldy's store
Middle Butte - Wittmeier's store
East Butte - Whitlash post office
Lucille - Post office
Marias - Dist. No. 5 school house

23 Nov. 1896 RIVER PRESS - We believe Chester precinct is entitled to the Republican blue ribbon for results at the recent election, having cast nine votes, seven being Republican, while two years ago there were but four votes cast, three being Democratic.

21 Sept. 1898 - Polling places and judges:

Chester, at the Weldy store. B.B. Weldy, Ed Trommer, E.P. Kilroy
Gold Butte, at the school house. R.A. Barnes, Jeff Preuitt, J. Berthelote
East Butte, at the Bourne & Hamilton store. John Wasesha, J.E. Hamilton, J.N. Dorsey
Lucille, at McNutt's house. W.P. Turner, Sr., L.C. Marsh, Louis Mumper
Circle Ranch, at Circle Ranch house. J.P. Lee, William Mitchell, William Brinkman

8 April 1903 - Thos. P. Strode appointed bounty commissioner. (3 are appointed-they appoint others). Strode appointed John McDowell, Gold Butte; James E. Hamilton, Hill; and George Dutro, Chester.

31 April 1903 RIVER PRESS - M.J. Healy, Inspector of Customs injured in a runaway accident traveling from Chester to Hill.

16 Dec. 1909 CHESTER SIGNAL - Last week a warrant was sworn out before a Justice of the Peace charging our Justice of the Peace with assault. It seems to us that in face of such a charge, it would be nothing but right if our people would demand that the Justice of the Peace resign his office. It is the opinion of the Signal that when a man is elected to such an office, it is his duty to set an example for good rather than evil; and when such an officer pulls a gun on a man because of a dispute, which probably entailed a very small amount of money, it was high time he was ousted; and if he will not resign, the people should request the county commissioners to impeach him. We must and will have law in Chester. We cannot afford to have the story go abroad that our peace officer was a gun packer and a gun player.

21 April 1910 - If our people can't realize the great necessity of incorporation they should take a trip around the horn and see what other towns have done and what is the result of incorporating these cities. Business men do not care to invest their money without a form of government and without police protection.

9 June 1910 - The county commissioners have appointed E.A. Engstrom to take the census of Chester preparatory to ordering an election for or against incorporation. (NOTE: Copy of this census appears elsewhere in this history. The original is in the Liberty County Museum).

18 June 1910 RIVER PRESS - In response to a petition signed by a number of residents of that part of Chouteau County, the board of commissioners has created the Township of Chester. The new township is formed principally of the territory within 18 miles south and 30 miles west of Chester.

6 July 1910 - C.A. McCarter has been appointed Justice of the Peace for Chester Township.

4 Aug. 1910 CHESTER SIGNAL - The county commissioners have appointed B.B. Weldy, H.E. Loranger and John Arthurs, judges, and J.J. Dunigan and C.I. Rockman, clerks of the special election to be held on the 16th.

18 Aug. 1910 - INCORPORATION ELECTION GOES THROUGH BY UNANIMOUS VOTE!

25 Aug. 1910 - NOTICE OF FIRST ELECTION OF OFFICERS OF CHESTER, MONTANA
NOTICE IS HEREBY GIVEN, Tat, pursuant to the provisions of Section 3210 of the Revised Codes of Montana, 1907, an election will be held in the Town of Chester, Chouteau County, Montana, on the 26th day of September, 1910 for the election of a Mayor for the said Town, and Two Alderman for the first Ward of said Town and Two Alderman for the second ward of said Town, and two Aldermen for the third ward of said Town, who will hold office until the first Monday in May after such election and until their successors are elected and qualified.

By Order of the Board of County Commissioners. W.R. Leet, County Clerk


Weldy says: "Yes, we can fill each office and have 752 people to tell the seven officers how to run the infant government!"

1 Sept. 1910 CHESTER SIGNAL - Hank Loranger went to Fort Benton Tuesday to help mix some Democratic medicine with the big chiefs.

15 Sept. 1910 - Every citizen of Chester should demand the new city council to order at least two chemical fire engines at once.

CITY COUNCIL MEETS - The council held its first meeting Tuesday evening and organized. Attorney Youell was appointed city attorney and clerk, and Shebel Rehal was appointed alderman in the first ward. Henry Snider has removed to another ward. It is expected that regular meetings will be weekly until the new government is running smoothly.

NOTE: The original of the following document is in the Liberty County Museum.


STATE OF MONTANA
 COUNTY OF CHOUTEAU.

Greeting:

H. R. Lech County Clerk of the County of Chouteau, and State of Montana, do hereby certify that at *Special* election held in said County and State, on the *24th* day of *September* 1910.

E. A. Ernstson received the highest number of votes cast for the office of *Alderman 3rd Ward, Chester & Co. L.* in the County of Chouteau, and State of Montana, and was therefore duly elected to said office as appears from the official election returns and canvass on file in my office.

ELECTION.

Witness my hand and official seal at Fort Benton, in said County, this *13th* day of *October* 1910.

H. R. Lech
County Clerk, Chouteau County, Montana.

To *E. A. Ernstson*
of Chester

M. Wood

1910 Litho Press Pln. Co., Fort Benton, Montana.

29 Sept. 1910 CHESTER SIGNAL - The apparent deficiency in our aldermen is the size of their belts!

GOOD MORNING, MAYOR ARTHURS!

JOHN ARTHURS ELECTED MAYOR - LORANGER, THE TWO SMITHS, SNIDER, BAKER AND ENGSTROM ALDERMEN - Election Was an Exciting One and Full of Interest

The first municipal election of the city of Chester was held on Monday. Voting places were established in each ward and the contest was quite spirited in the second ward.

John Arthurs was elected mayor with a total of 28 votes; W.V.D. Chapman receiving 16 votes. In the first ward B.H. Smith and H. Snider were elected aldermen. There was a tie between Snider and B.B. Weldy that was broken by Weldy conceding the election of Snider. Thos. Smith and H.E. Loranger were elected aldermen in the second ward and E.A. Engstrom and C.F. Baker in the third ward. That the new officers will have a big bunch of hard work before them will not be realized, perhaps until they get down to business, and the work being new to the majority of them, it will be no easy task for them to get the machinery in motion. That mistakes will be made is conceded by all, but none of us are infallible, and we must bear with the errors and seek to correct them at the earliest possible moment. It will be well to go slow and be sure than to rush things and have to do them over. Many eyes are upon us and our wish is that the new council may have a most successful tenure of office.

1913 - HISTORY OF MONTANA by Helen Fitzgerald Sanders

JOHN A. ARTHURS. The history of the city of Chester will always give distinction to the name of its first mayor, Mr. J.A. Arthurs, who was the first official chosen to fill this post when the city was incorporated, and is also the present mayor, having been re-elected.

Mr. Arthurs, who has been identified with northern Montana throughout his active career, was born in St. Joseph, Michigan, March 18, 1880, and was educated in the local schools of that city. He was at an early age thrown upon his own responsibilities, and has won success in business and public honors through the force of his own character and resources. In 1894 he came west and entered the employment of the Benton Cattle Company as a cowboy, his work and headquarters being eighteen miles south of the site of Chester. After eight years with this company, he spent about nine months in Chicago, after which he returned to Montana and started in business for himself at Chester. As a representative business man, his fellow citizens chose him as the first mayor of the new city in 1909, and in May, 1911, again elected him by a large majority. His politics is Republican, and his church is the Methodist.

Mr. Arthurs was married in Chicago, March 6, 1905, to Miss Beatrice Barnes. They have a comfortable home in Chester, and have a large circle of friends in the city and vicinity.

Mr. Arthurs' father was James A. Arthurs, who was born in Ontario, Canada, in early life moved to St. Joseph, Michigan, and was a prospering farmer, but died when his son was about five years old. His wife was Rosa (Des Broe) Arthurs, a native of Michigan, and now living in Kalispell, Montana, at the age of forty-nine.

*The above is out of sequence.



John A. Withers.

8 Dec. 1910 - City ordinances published.

We have just about 2,000 dogs in town. With a tax of \$2 a head, the city government would either begin business with a handsome bankroll or else there would not be so many curs to bark at the moon.

30 March 1911 - There should be a herd law in town against town cows and hogs. No one can have a garden or flower beds until this is done.

6 April 1911 - At the town election, John Arthurs received 29 votes to W.V.D. Chapman's 12, and was again elected mayor of the town. Bret Smith and M.J. Haley were elected aldermen in the first ward, defeating Walter J. Burton and J.A. Greenleish. In the second ward, H.E. Loranger and Thos. P. Snuffer defeated C.E. Biggs and Thos. Smith; and in the third ward, E.R. Furlong and Ellis Clayton were elected. C.F. Baker was the loser. The successful candidates in this election will choose by lot at the first meeting of the new town council which will serve for two years and which will serve for one year.

6 April 1911 - NOTICE: 10 days to clean up back yards and alleys...notice by city, signed by Mayor Arthurs. If citizens don't comply, the job would be done by the city and charged to their property taxes.

20 April 1911 - Notice given to quit dumping garbage into the old cellars north-east of the railroad reservoir.

Chester should have an ordinance limiting the speed of automobiles.

17 Aug. 1911 - The assessed valuation of the Town of Chester, as reported by the Town Clerk is \$299,807.00.

Fall of 1911 - Voting Places for Forming Hill County
JOPLIN TIMES -

Precinct No.	32	Alma - Post office
	33	Hill - Hotel
	34	Chester - Albright Building
	35	Whitlash - Town Hall
	36	Gold Butte - Town Hall
	37	Lothair - Town Hall
	38	Galata - School House
	39	Concord - School House
	40	Dunkirk - School House
	41	Beatrice - Post office
	42	Circle Ranch - Circle Ranch House
	43	Black Coulee - Chas. Brinkman Residence
	75	Laird - Laird Post office
	78	Prescott - Bevan's Ranch
	79	Trommer - Trommer Post office

14 March 1912 - Locations for new Hill County offices are as follows:
County Surveyor, Clerk and Recorder, Treasurer - Over Havre National Bank
Judge's chambers, Clerk of Court - In City Hall. Court will be held in this
building.

Sheriff's Office will be over Boone's Drug Store for the present.

THE SIGNAL is now the official newspaper for Hill County.

The name of the proposed new county on our west is Toole in honor of our former governor.

28
MARRIAGE RECORDS FOR CHOUTEAU COUNTY

DATE	APPLICANT	BRIDE	LICNU	BKNU	PGNU	NOTE
03\17\1888	Emerson, William Henry	Cox, Martha Jane		A	12	
02\28\1889	Edwards, George	Flag, Fannie Eagle		A	41	
05\20\1890	Ellis, Alexander	Burk, Josephine	16	A	87	
12\20\1893	Ellis, Henry	Ball, Jane E.	238	A	310	
10\27\1898	Evans, William C.	Schaap, Catherine	400	B	6	
12\25\1899	Elder, J. C.	Sipple, M. Lenore	475	B	81	
10\31\1900	Esher, William	Bauer, Louisa	525	B	131	
01\22\1901	Engellant, Jurgen	Sommer, Augusta	534	A	140	
02\20\1901	Easbey, Charles F.	Fleming, Kathryn A.	540	B	146	
05\17\1901	English, Oliver	Uerland, Lula	551	B	157	
06\05\1901	English, Hugh W.	Behrens, Linda May	554	B	160	
06\26\1901	Emirson, John E.	Druse, Dorothy E.	561	B	167	
12\04\1901	Eversmeyers, Henry C.	Roush, Mary V.	593	B	199	
02\22\1902	Evers, Herman C.	Lehfeldt, Matilda L.	603	B	209	
03\26\1903	Evans, Henry L.	Schapp, Annie B.	683	B	289	
05\27\1903	Erbes, William O.	Brill, Josephine E.	693	B	299	
09\20\1903	Emery, William	Doxtater, Matilda	717	B	323	
03\02\1908	Elkin, Aliet Benjamin	Carr, Della Julia	1097	C	205	
01\09\1909	Eckroat, Rufus C.	Tempki, Selma Elizabeth	1169	C	277	
06\16\1909	Eastman, Peter	Ducharme, Angeline	1200	C	308	
09\24\1909	Evers, George	Keith, Rose	1225	C	333	
10\06\1909	Ewalt, Roger J.	Long, Lydia	1228	C	336	
12\07\1909	Elkins, Amos	Lynn, Mary	1242	C	350	
06\01\1910	Ekblad, Richard V.	Torkelson, Amanda	1276	C	384	
06\08\1910	Erickson, Charles E.	Ledeau, Mary	1280	C	388	
03\18\1911	Eggen, Harold	Olson, Nellie Ellen	1387	C	495	
11\04\1911	Eskew, Edward E.	Carder, Iva Myrtle	1480	D	86	
02\13\1912	Elderman, Andrew	Bferring, Caroline Augusta	1530	D	137	
05\22\1913	Elliot, Allen	Haakensen, Theresa	1589	D	195	
10\28\1913	Eastlund, John E. F.	Larson, Esther May	1616	D	222	
01\23\1914	Elwell, Arthur T.	Beck, Pearl M.	1641	D	247	
04\10\1914	Emerick, William	Denayer, Julia	1651	D	257	
12\16\1914	Epperson, George	Clark, Katherine	1713	D	319	
12\28\1914	Elwell, H. Rhea	Foster, Edith R.	1720	D	326	LNRT
11\08\1915	Eavly, Fred	Bunting, Lida	1791	D	397	
01\07\1916	Erickson, Roy L.	Hippe, Carey	1804	D	410	
04\10\1917	Engdahl, Percy L.	Bramlette, Nora	1919	E	35	
06\02\1917	Everson, Ever O.	Dickeson, Katherine B.	1932	E	48	
10\27\1917	Ek, Ivar	Pelsey, Susie	1981	E	97	
09\09\1919	Eklund, Frank	Holmes, Margaret	2126	E	242	
03\24\1920	Eggers, Arnel H.	Sortor, Helen June	2149	E	265	
10\09\1920	Elder, Albert L.	Loundagin, Hazel Vivian	2181	E	297	
07\19\1921	Enlow, Charles E.	Paulson, Margaret	2215	E	331	
10\13\1921	Egosque, Barney	Ingalls, Mary	2230	E	346	
11\05\1921	Eyestone, Harold M.	Edwards, Letha	2235	E	351	
02\27\1922	Englander, Maurice F.	Bailey, Avis Lucille	2243	E	359	LNRT
09\15\1923	Evans, Henry William	Sutherland, Ruth	2307	E	423	
07\18\1928	Evans, Ira Benjamin	Brewster, Edith Ruth	2529	F	149	
09\18\1928	Enochson, Henry Sigvald	Ballestad, Alma Sophia	2541	F	161	
11\24\1928	Ellefson, Theodore Edgar	Walter, Elizabeth	2554	F	174	
11\04\1929	Erickson, Frank Erick	Hanna, May A.	2618	F	238	
12\18\1930	Emmet, Howard	Nelson, Vera	2678	F	298	
04\29\1931	Engum, Otis Harley	Brown, Dorothy Allene	2688	F	308	

MARRIAGE RECORDS FOR CHOUTEAU COUNTY

DATE	APPLICANT	BRIDE	LICNU	BKNU	PGNU	NOTE
01\30\1932	Echelard, Joe	Sticka, Eleanor	2734	F	354	
09\03\1932	Englert, Philip M.	Savoie, Irene Rita	2755	F	375	
05\15\1933	Engman, Hilding E.	Tucker, Lucy Fern	2792	F	412	
06\14\1933	Ensley, Charles Norton	Jumper, Lola Laura	2802	F	422	
06\22\1933	Ehlers, Forrest	Smith, Thelma	2805	R	425	
01\02\1934	Eustance, William C.	Sewell, Lillian G.	2843	F	463	
06\29\1937	Emmens, Ray	Driscoll, Margaret	3009	F.	629	
06\21\1937	Elfers, Paul	Morrow, Edna Josephine	3177	G	156	
08\26\1917	Eklund, Garth	Dockum, Virginia	3198	G	177	
11\24\1937	Edens, Walter	Salisbury, Jean	3220	G	199	
10\19\1938	Engelkis, Arthur Johan	Randall, Laura Mae	3302	G	281	
05\23\1939	Engellant, Arnold H.	O'Hara, Madolyn	3366	G	345	
02\23\1940	Edwards, William Dwight	Connelly, Peggy Katherine	3460	G	439	
05\18\1940	Engstrom, Norman L.	Hoffman, Vivian	3489	G	468	
06\15\1940	Ellingston, Conrad D.	Lench, Helen F.	3502	G	481	
01\04\1941	Evanko, John	Corbin, Evelyn A.	3582	G	561	
03\18\1941	Eschenbacher, George Edward	Hall, Geneva Pearl	3607	G	588	
06\19\1941	Erickson, Ray Lee	Good, Fern Maxine	3638	G	619	
09\18\1941	Eastman, Fredrick Adelbert	Dwyer, Harriet	3664	H	3	
06\25\1942	Ebaugh, Harold Christian	Dragge, Hilda Elnore	3754	H	92	
06\22\1942	Eyestone, Ralph L.	Marsh, Udella Rae	3759	H	97	
09\12\1942	Eberhardt, Donald Sevrin	Lande, LaVerne Evelyn	3781	H	119	
03\02\1943	Elmore, John Franis	Stannard, Ida E.	3819	H	156	RINC
06\27\1943	Elliott, S. Sgt. Virgil	Ryerson, Eleanor	3843	H	180	
08\04\1943	Earley, Owen	Harris, Shirley	3855	H	192	
08\12\1944	Erickson, Nels N.	Robertson, H. L. C.	3934	H	272	
01\21\1945	Earl, Wilbur Otto	Bahnmler, Viola Victoria	3982	H	320	
03\07\1945	Engellant, Francis Lloyd	Blythe, Blanche Joy	3996	H	334	
09\08\1945	Ellis, Robert Alexander	Walker, Anita Louise	4041	H	377	
03\16\1946	Erickson, Grant R.	Benema, Georgia	4096	H	431	
04\19\1946	Ekwartzel, Ray Edward	Green, Montana Edith	4108	H	443	
05\23\1946	Elliott, Austin L.	Coleman, Gloria June	4126	H	461	
06\04\1946	Eberl, Frank	Krause, Edrie C.	4130	H	465	
06\14\1947	Elliott, Charles Ray, Jr.	Miller, Ellen Elizabeth	4254	H	590	DIS.
01\15\1948	Ekstrom, Arthur Allen	Nefus, Ella Belle	4313	H	649	
04\16\1948	Elkins, Charles LaVern	Rencurel, Marina Faith	4335	I	21	
10\28\1948	Everz, John J.	Gettel, Anna	4399	I	85	
06\30\1949	Ehnes, John Eugene	Lehman, Harriette Alene	4468	I	155	
03\08\1950	Edwards, Keith Clarence	Petrock, Maxwell Marble	4556	I	243	
12\23\1950	Erickson, George Leonard	Benedict, Felicia Alma	4654	I	341	
05\15\1951	Erwin, Jack	Brockley, Alice Emily	4680	I	367	
07\08\1951	Evans, Robert D.	Doll, Dorothea M.	4692	I	379	
12\05\1951	Everson, Paris E.	Nunzianta, Anna M.	4729	I	416	
06\10\1952	Ehret, Edward M.	Pings, Edith G.	4771	I	458	
08\16\1952	England, Kenneth Carl	Burchfield, Peggy Le	4791	I	478	
12\20\1952	Engum, Carroll Harley	Kotthoff, Joan Estella	4832	I	519	
09\26\1953	Eastman, Albert Joseph	Becker, Esther Arline	4905	I	592	
05\08\1954	Egan, Eugene Edward	Williamson, Donna Marie	4960	J	8	
09\15\1954	Erickson, Lee Ben	Atkins, Susan Elinor	4988	J	36	
03\29\1956	Emerson, Harold Arthur	Canavan, Shirley Ann	5156	J	203	
03\09\1957	Ellingson, Robert Milton	Edgar, Lois Phyllis	5257	J	304	
12\26\1957	Ellifritt, James Herman	Kaiser, Sandra Ellen	5353	J	400	
03\12\1958	Erickson, Stanley Richard	Hovland, Betty Ann	5378	J	425	

MARRIAGE RECORDS FOR CHOUTEAU COUNTY

DATE	APPLICANT	BRIDE	LICNU	BKNU	PGNU	NOTE
03\27\1958	Eklund, Robert Garth	Staats, Sandra Kay	5381	J	428	
04\21\1958	Eberl, Frank Robert	Jones, Dolores Arlene	5390	J	437	
06\02\1958	Eacork, George Frederick	Lange, Pearl Laurette	5404	J	451	
08\02\1958	Everson, Paris Elwyn	Hemburrow, Edith Maud	5440	J	486	
12\16\1958	Eickhoff, Henry	Dorr, Ida	5492	J	539	
03\14\1959	Einan, John Leonard	Kuglin, JoMarie Mary	5515	J	562	
03\22\1959	Evers, Jan Hall	Massimino, Therezinha	5521	J	568	
05\29\1959	Evans, Jack E.	Potter, Helen Laura	5545	J	592	
04\08\1960	Eagen, James T.	Johnson, Christine	5649	K	30	
04\19\1960	Ehnes, Victor Lee	Brunett, Ramona Gay	5652	K	33	
11\10\1960	Engbretson, Clarence Albert	Huttinger, Audrey Euginia	5716	K	98	LNRC
11\30\1960	Enright, John Emery	Martin, Donna June	5722	K	103	
12\03\1960	Edmonds, Jesse I.	Spalding, Chauna C.	5726	K	107	DIS.
08\10\1961	Entsminger, James Charles	Smith, Mary Ellen		K		DNRL
04\22\1965	Evans, Kenneth Robert	Ray, Janet Lee	6053	K	433	
02\07\1966	Easton, Howard Marvin	Vegoren, Penny Lee	6086	K	466	
12\30\1966	Engellant, Edward Lloyd	Wirtala, Lois Jane	6119	K	499	
04\29\1967	Eloff, Larry Thomas	Jordan, Mary Frances	6134	K	514	
09\16\1967	Ensley, Alan Wayne	Hasbrouck, Lois Marie	6159	K	540	
11\11\1967	Ellington, Benjamin Thomas	Sullivan, Constance Mary	6168	K	548	
11\21\1967	Eaton, Dellas Glenn	Naylor, Nancy Lynn	6169	K	549	
11\18\1969	Edwards, Ethan Allen	Wisch, Fontella Kay	6264	L	46	
07\26\1970	Ehrlichmann, James Paul	Madison, Suzanne Esther	6291	L	73	
08\08\1970	Ekwall, Donald Jay	Henderson, Penny Lorraine	6292	L	74	
08\29\1971	Evans, Eldon Earl	Braun, Cheryl Lynn	6346	L	128	
06\10\1972	Everson, Lonnie Ray	Galloway, Betty Eleanor	6377	L	159	
08\25\1972	Evans, Rodger Lee	Hankins, Marlana Fay	6389	L	171	
09\12\1975	Ek, Daniel Ray	Cook, Karen Renea	6530	L	312	
10\26\1975	Eatinger, Mark Carl	Cornett, Cheryl Ann	6535	L	317	
12\06\1975	Elliott, Stuart Miller	Schaefer, Rita Elaine	6546	L	328	
06\25\1977	Eklund, Jay Scott	Dostal, Patricia Anne	6626	L	408	
08\04\1979	Eberlein, Richard J.	Crawford, Kellie Jean	6729	L	511	
09\29\1979	Evans, Thomas Eli	Hightower, Barbara Lea	6736	L	518	
08\08\1980	Engellant, Arnold Hans	Eaves, Margie	6785	L	567	
12\20\1980	Elliott, Peter Martin	May, Kim Colette	6798	L	580	
10\23\1982	Evans, Timothy Allen	Paun, Pamela Ann	6888	M	89	
12\04\1982	Ebeling, Robert Warren	Tanner, Holly Jean	6894	M	94	
06\04\1983	Ernst, Daniel Jacob	Metcalfe, Rosanne Marie	6906	M	108	
06\11\1983	Engellant, Richard J.	Harvey, Brenda Kay	6911	M	112	
02\01\1986	Erickson, Clarence John	Flanagan, Mabel Clara	7019	M	217	
03\22\1986	Elkins, Floyd James	Smith, Teresa Ann	7022	M	221	
09\26\1987	Ellis, Raymond Clarence	Kostelnik, Bernadette Marie	7066	M	269	
01\21\1989	Edwards, Craig Allen	Phillips, Roberta Christine	7112	M	307	
07\07\1990	Earl, Brett William	Eloff, Anna Marie	7164	M	359	
10\12\1991	Evraets, David Michael	Bahnmler, Jeannette Marie	7204	M	398	

MARRIAGE RECORDS FOR CHOUTEAU COUNTY

DATE	APPLICANT	BRIDE	LICNU	BKNU	PGNU	NOTE
06\22\1891	Fort, Lee Pack	Longhair, Miss	81	A	152	
04\13\1893	Fellers, Louis	Lapierre, Elizabeth	158	A	229	
03\21\1894	Forest, S. H.	Marshall, Hessie	210	S	281	
03\21\1894	Fuller, Edgar	Herron, Annie	215	A	286	
12\05\1894	Fitzgerald, William	Reynolds, Etta	244	A	316	
12\11\1895	Frank, Guy O.	McGuinniss, Mary	263	A	335	
02\03\1896	Fitzpatrick, James C.	Wilson, Mary Fitzgerald	272	A	344	
05\01\1896	Farnum, Charles Ernest	Everett, Mary Lizzetta	279	A	351	
08\19\1896	French, Walter Everett	Everett, Melissa Alice	295	A	367	
01\11\1897	Ford, John	Kreger, Millie	319	A	391	
01\26\1898	Flynn, John	Greating, Minnie	370	A	442	
02\28\1898	Fineran, James	Day, Mary Catherine	372	A	444	
05\18\1898	Flanagan, Merrit	Murray, Miss Ida M.	379	A	451	
06\15\1899	Forbes, Edward	Bosley, Adrienne May	438	B	44	
01\30\1900	Fish, Roy L.	Bright, Miss Cora M.	488	B	94	
09\15\1900	Freeman, B. A.	Truscott, Mary E.	518	B	124	
11\11\1900	Fitch, Frank	Plaisted, Affie M.	522	B	128	
10\27\1902	Falcon, Peter	Emily, Adell	659	B	265	
08\09\1903	Fitch, Thomas H.	Hertel, Katie	706	B	312	
08\23\1903	Fox, James E. Jr.	Simmual, Christena	714	B	320	
01\27\1904	Fiant, Buck	Beania, Annie	752	B	358	
08\03\1904	Filler, Edward W.	Trottier, Mary	793	B	399	
12\26\1906	Fish, Carroll Richard	Hadley, Orpha Rebecca	993	C	101	
03\30\1906	Fifer, John A.	Terch, Julia	926	C	34	
06\02\1906	Fitzgerald, Thomas F.	Herbert, Mary C.	937	C	45	
05\25\1906	Fischer, Frederick C. E.	Fischer, Mattie	941	C	49	
07\24\1907	Frye, Ralph L.	Ray, Nellie E.	1033	C	141	
09\21\1907	Frye, R. W.	Wheeler, Pearl E.	1058	C	166	
11\06\1907	Fyant, Zack	Lawrence, Annie	1073	C	181	
11\08\1907	Forge, George L.	Bice, Florence M.	1075	C	183	
06\23\1908	Flanagan, Frank A.	Thibault, Nina C.	1117	C	225	
11\17\1908	Fitzpatrick, John	Hunnewell, Grace P.	1154	C	262	
12\05\1908	Ferguson, James A.	Pringle, Rosette B.	1159	C	267	
06\22\1909	Feist, Frank	Kass, Antonia	1205	C	313	
11\17\1909	Filippis, Salvatore De	Cardarozzo, Carmela	1238	C	346	
05\10\1910	Fromm, John	Seeley, Hazel	1268	C	376	
09\21\1910	Fish, Perry	Heimbigner, Mary	1323	C	431	
02\07\1911	Fijihara, Tsunejirow	Shibata, Kiku	1378	C	486	
04\21\1911	Falcon, Alfred	Emily, Emma	1402	D	8	
06\06\1911	Filion, Charles J.	Loy, Mabel Anville	1421	D	27	
07\21\1911	Forde, Olaf E.	Mattoon, Hazel Fay	1438	D	44	
08\31\1911	Ferguson, John F.	Shoemaker, Gertrude M.	1457	D	63	
11\27\1911	Furlong, Edward R.	Keith, Ina M.	1496	D	102	
03\22\1912	Fay, George E.	Smith, Pearle E.	1536	D	142	
08\08\1912	Footit, Steve	Nottingham, Mabel V.	1553	D	159	
08\04\1913	Fleischman, Frank	Hampton, Dora	1600	D	206	
10\16\1913	Fultz, Luther M.	White, Edith C.	1614	D	220	
11\25\1913	Foster, Malcolm C.	Wright, Mabel Irene	1624	D	230	
12\31\1913	Figley, G. Frank	Pierce, Edna K.	1635	D	241	
08\05\1914	Fletcher, Fred	Fisher, Eva B.	1672	D	278	
09\14\1914	Fritz, William H.	Lee, Kate	1681	D	287	
12\28\1914	Foster, Walter L.	Elwell, Reba A.	1721	D	327	
01\30\1915	Farmer, Arthur J.	Huntley, Hope E.	1731	D	337	

MARRIAGE RECORDS FOR CHOUTEAU COUNTY

DATE	APPLICANT	BRIDE	LICNU	BKNU	PGNU	NOTE
04\17\1915	Fait, Edwin P.	Shields, Ellen Mary	1745	D	351	
12\09\1916	Foster, C. V.	Healy, Loretta T.	1890	E	6	
12\18\1916	Fishbaugh, Dwight J.	Craig, Julia Lavera	1893	E	9	
01\12\1917	Fisher, Clarence	Brodth, Sigrid Mabel	1902	E	18	
05\07\1917	Fisher, Alec	Guardipee, Veronica	1925	E	41	
06\25\1917	Fladstol, Melvin	Stordahl, Gena Mattie	1940	E	56	
06\25\1917	Fishbaugh, Ray	Baack, Augusta E.	1942	E	58	
07\23\1917	Fultz, Earl	Stephan, Emiline A.	1947	E	63	
10\17\1917	Flaten, Otto	Rieland, Gusta	1977	E	93	
11\14\1917	Fairchild, James F.	Thisselle, Eva	1992	E	108	
07\31\1920	Fearon, Edward W.	Stockwell, Gertrude	2173	E	289	
08\03\1920	Freeburg, Harry M.	Johnson, Ethel	2174	E	290	
09\12\1921	Fiehlman, Frank	Crowell, Minerva	2223	E	339	
12\01\1921	Fallwell, Gradie	Reichelt, Flora	2238	E	354	
01\11\1922	Fry, James Robert	Wolf, Emma	2241	E	357	
09\27\1922	Farrell, Tilson George	Wilson, Alice	2263	E	379	
10\18\1922	Fisher, Earl A.	Burchett, Lola C.	2265	E	381	
04\21\1923	Fisher, Bohumer	Melaga, Edna	2288	E	404	
04\21\1923	Fisher, Louis	Vravel, Julia	2287	E	403	
06\18\1923	Fischer, Heide Joseph	Giles, Ruth Ethel	2296	E	412	
08\18\1923	Frank, William Peter	Gallagher, Rose	2305	E	421	
11\26\1924	Ferguson, Donald	Webber, Gladys	2354	E	470	
09\17\1925	Faber, Theodore M.	Kane, Mary E.	2381	F	1	
09\10\1927	Fowler, Burl Howard	Johnson, Hazel	2474	F	94	
10\29\1927	Farmer, Clyde C.	Stepman, Clara Unis	2490	F	110	
10\19\1927	Frank, Paul George	Garrity, Edna	2484	F	104	
11\19\1928	Fyffe, Clarence	Stapleton, Valene J.	2534	F	157	
01\24\1929	Ferguson, Howard	Marzetts, Jeanette	2560	F	180	
04\29\1929	Farmer, Frederick William	Powell, Alma	2566	F	186	
10\05\1929	Ferris, Gordon Haswell	Sagen, Lucille Virginia	2611	F	231	
01\06\1930	Faber, John Russell	Shaffer, Ruth	2632	F	243	
06\07\1930	Farrell, Maurice LaPine	Adams, Ruth Marie	2646	F	266	
06\20\1931	Fritz, Sebastian	Zelenka, Mildred	2699	F	319	
07\06\1931	Fickler, Emerson	Drobbs, Annie Catherine	2702	F	322	
07\27\1932	Fairchild, James F.	Morris, Marion J.	2749	F	369	
10\24\1932	Fish, Charles	Konesky, Helen	2765	F	386	
07\26\1933	Fey, Joe Ambrose	Kirkendall, Leona	2810	F	430	
09\02\1933	Fezzey, Willis E.	Hodge, Edith Myrtle	2817	F	437	
01\21\1934	Flanery John Huston	Moses, Mildred	2845	F	465	
06\16\1934	Fjelstad, Elbert R.	McConahay, Helen W.	2876	F	496	
06\23\1934	Flasted, Edward J.	Baker, Dorothy	2878	F	498	
09\10\1934	Foster, J. Howard	Merkel, Dorothy Frances	2894	F	514	
10\13\1934	Fredrickson, George	Kind, Helen	2905	F	525	
10\13\1934	Foster, Warren A.	Gies, Cecelia	2908	F	528	
12\15\1934	Foreman, Vincent Fred	Letz, Marcella Patricia	2922	F	542	
01\02\1935	Fedge, Howard D.	Smith, Bessie	2928	F	547	
02\19\1935	Flubacher, Fred John	Gianoulis, Arleen Ann	2942	F	562	
03\30\1935	Fulbright, James E.	Birkland, Louise	2949	F	569	
05\24\1935	Fisher, Joe Bert	Jochem, Mildred Mary	2957	F	577	
06\25\1935	Frey, Carl Martin	Hilderbrand, Hilda	2986	F	606	
06\28\1935	Fish, Otto H.	Stewart, Zella	2992	F	612	
06\29\1935	Felton, William Pruden	Bedell, Mabel Kathern	3007	F	627	
11\27\1935	Fjelstad, Maurice Raymond	Linhart, Lillian Kathryn	3036	G	14	

MARRIAGE RECORDS FOR CHOUTEAU COUNTY

DATE	APPLICANT	BRIDE	LICNU	BKNU	PGNU	NOTE
03\19\1936	Fritz, Jack	Talire, Sadie	3059	G	38	
06\18\1936	Freeberg, Francis William	Karaffa, Cecelia K.	3083	G	62	
01\25\1937	Fagenstrom, Cregor Patrick	Anderson, Avis Joan	3131	G	110	
03\04\1937	Fedge, Hans Olson	Munson, Mary Alvina	3137	G	116	
04\19\1937	Francisco, Charles A.	Baluka, Elizabeth	3150	G	129	
11\03\1937	Fisher, Joe	Bailey, Elva	3213	G	192	
07\20\1938	Farmer, Herbert Hamilton	VanWinkle, Vera Viola	3268	G	247	
08\05\1938	Fitterer, Pete	Fitterer, Anna	3275	G	254	
09\03\1938	Frisbee, Sumpster Arnold	Korby, Martha Elizabeth	3281	G	260	
11\04\1938	Forsman, Arthur Carl	Kimmerle, Wilma Leonora	3304	G	283	
04\03\1939	Ford, Gordon J.	Estell, Clara A.	3344	G	323	
06\01\1939	Ferda, George	Henrikson, Helen	3372	G	351	
09\08\1939	Fanderick, Daniel	McVey, Kathryn	3408	G	381	
03\13\1940	Fisher, Martin	Coates, Betty	3472	G	451	
04\27\1940	Fox, William	Curry, Catherine A.	3484	G	463	
09\04\1940	Floren, Wallace	Kapperud, Helen	3536	G	515	
09\14\1940	Fuller, Harold G.	Dolven, Zelma	3543	G	522	
10\05\1940	Frey, William Anthony	Koski, Florence Helma	3549	G	528	
01\20\1941	Fredrickson, Gene W.	Browman, Kay	3589	G	568	
05\15\1941	Fertterer, Leo	Sanders, Gertrude Roe	3625	G	606	
01\21\1942	Florek, Edward L.	Gentry, Ann	3710	H	48	
03\12\1942	Furrow, George F.	Coleman, Emma Dora	3728	H	66	
10\10\1942	Fredrickson, Gene W.	Johnson, Sarah Ann	3788	H	126	
07\11\1943	Fragomini, John, Jr.	Jahnke, Maribelle	3848	H	185	
09\22\1943	Fishbaugh, Fred Charles	Tschache, Grayce Maude	3870	H	207	
06\30\1944	Fox, Harvey Wesley	Murray, Virginia May	3920	H	257	
10\06\1944	Ferko, Martin	Schultz, Freda	3954	H	292	
04\15\1946	Fredrickson, Gene W.	Johnson, Sarah A.	4105	H	440	
05\25\1946	Ferko, John Albert	Nomee, Bessie	4128	H	463	
06\05\1946	Frank, James B.	Stokes, Jane	4132	H	467	
09\07\1946	Freeman, David Anderson	Arps, Marie Marcella	4175	H	510	
10\11\1946	Frey, Donald	Kavran, Emma	4184	H	519	*
12\28\1946	Forney, Monte J.	O'Connor, Geneva	4210	H	546	
01\12\1947	Francetish, William	Romundstad, Delores	4213	H	549	
01\22\1947	Ferguson, Robert William	Schweitzer, Selma Irene	4215	H	551	
02\07\1948	Farmer, Jack Royal	Schultz, Beryle Angeline	4319	I	5	
03\15\1948	Farmer, Dayle Edward	Briscoe, Shirley Mae	4327	I	13	
12\18\1948	Faison, Maxwell L.	Calkins, Martha Marie	4415	I	102	
05\14\1949	Fairbanks, Charles N.	Painter, Bernadine Lois	4450	I	137	
06\06\1949	Frieling, John Eugene	Siebenaler, Genevieve Elizabeth	4458	I	145	
08\19\1949	Figarelle, Tony	Anderson, Bonnie Lorraine	4484	I	171	
08\16\1949	Frieling, George Gerald	Cooper, Elna Ann	4485	I	172	
08\20\1949	Flesch, Lyle Robert	Wilson, Carol Marie	4486	I	173	
10\03\1949	Frost, Roy Dean	Rasco, Clara Elizabeth	4508	I	195	
08\19\1950	Fox, Robert James	Blend, Betty Lou	4608	I	295	
09\01\1950	Flatt, Francis Claire	Fish, Freda Evelyn	4612	I	299	
09\09\1950	Faber, Leo M.	Bull, Beverly June	4614	I	301	
10\08\1950	Forslund, Edward Henry	Carroll, JoAnn	4628	I	315	
12\16\1950	Fultz, William Otto	Belle, Hellen Anna	4651	I	338	
12\19\1950	Frank, Paul George	Marcotte, Dorothy Daila	4653	I	340	
08\28\1951	Freeman, Milton E.	Andrus, Joan Louisa	4701	I	388	
11\17\1951	Fleming, Arthur Martin	Spencer, Velma Joy	4724	I	411	
05\09\1953	Fraunhofer, Martin	Lussier, Bertha Bell	4866	I	553	

MARRIAGE RECORDS FOR CHOUTEAU COUNTY

DATE	APPLICANT	BRIDE	LICNU	BKNU	PGNU	NOTE
07\10\1953	Flanery, Robert Donald	Kelly, Eva Lorraine	4884	I	571	
08\09\1953	Fisher, Clay Dean	Rowe, Frances Ione	4889	I	575	
09\19\1953	Fiers, Albert Joseph	Kittock, Ruth Marie	4904	I	591	
12\31\1953	Faller, Charles Oliver	Carpenter, Amy Lee	4933	I	619	
02\22\1954	Frieling, James Harm	Brinkman, Donna Lorraine	4941	I	627	
07\27\1954	Fisher, Floyd Gene	Peterson, Dimitra	4976	J	24	
10\30\1954	Fry, James Edward	Silvan, Libby	5001	J	48	
12\27\1954	Febach, Kenneth E.	Armstrong, Claudia	5025	J	72	
04\23\1955	Fuller, Raymond James	Turner, Sharon Dawn	5043	J	89	
05\04\1955	Feltner, James Michael	Zachary, Merlene Dele	5044	J	90	
06\01\1955	Farrington, Edward Albert	Lydon, Mary Ann	5053	J	99	
06\11\1955	Flatness, Olaf H.	Hall, Nina Mae	5060	J	106	
09\30\1955	Fischer, Albert John	Green, Mary Beatrice	5097	J	144	
01\20\1956	Freudenberg, Gerald Dean	Moran, Dorothy Jean	5134	J	181	
02\12\1956	Ferree, Gary Buel	Bratvold, Ethel Mae	5140	J	187	
11\03\1956	Fiskum, Ernest Orram	Teed, Margaret Louise	5233	J	280	
12\29\1956	Fertterer, Anton, Jr.	Alexander, Elsa Bell	5247	J	294	
05\11\1957	Fisher, Robert Clarence	Carpenter, Mary Theresa	5279	J	326	
09\07\1957	Frieling, Donald Hipe	Mulkins, Sharril Ann	5315	J	362	
10\10\1957	Francis, Alfred Murrel	Ledbetter, Betty May	5331	J	378	
11\25\1957	Frieling, Stanley Anthony	Briese, Shirley Jean	5340	J	390	
01\20\1958	Figarelle, August	Richardson, Linda Jean	5364	J	411	DIS.
01\28\1958	Finch, William Joseph	Conner, Lillian Caroline	5366	J	413	
01\31\1958	Fuller, Wayne Raymond	MacKenzie, Margaret Alexina	5368	J	415	
09\20\1958	Farrell, Frederick B.	Green, Rose Mae	5466	J	513	
11\08\1958	Furhmann, Willard Anthony	Doyle, Patricia Aleen	5480	J	527	
12\29\1958	Ferda, Robert	Sedlock, Mary Ellen	5500	J	547	
05\22\1959	Frank, Paul George	Kelly, Josephine Agnes	5544	J	591	
03\05\1960	Feiden, John Richard	Woodward, Judith Ann	5634	K	15	DIS.
07\27\1960	Frieling, George G.	Hyatt, Alice Joyce	5680	K	61	
12\21\1960	Forest, Albert Joseph	Nelson, Bertha Helen	5729	K	110	
03\25\1961	Ferda, John Robert	Chapman, Jenny Lee	5760	K	141	
06\09\1961	Fairhurst, James Leslie	Brown, Diana Jessie	5788	K	169	
10\06\1961	Fultz, James E.	Caudell, Beverly J.	5828	K	209	
05\29\1962	Ferrell, Mark William	Allen, Patricia Grace	5877	K	258	
08\04\1962	Ferris, James Bruce	Smole, Shirley Marie	5894	K	274	
04\08\1963	Fletcher, Richard Vernon	Peterson, Donna Lee	5959	K	339	
12\06\1963	Frieling, George G.	Willson, Alice J.	5997	K	377	
05\15\1965	Firman, Paul Francis	Besette, Patricia Louise	6055	K	635	
12\16\1966	Fialkosky, Paul Andrew	Hannah, Marlene Kay	6115	K	495	
07\22\1967	Fetters, Gerald Lee	Wigger, Sheryl Elin	6150	K	530	
07\22\1969	Frink, Herbert D.	Engen, Linda Louise	6253	L	35	
01\03\1970	Fultz, Waden George	Leinart, Deborah Evon	6270	L	52	DIS.
04\11\1970	Forney, Bruce Clayton	Erlandson, Wanda Lee	6279	L	61	DIS.
05\16\1970	Feldman, Elmer Eugene	Good, Mary Elizabeth	6283	L	65	DIS.
08\29\1970	Frazier, Dennis Owen	Cline, Karen Lynn	6298	L	80	DIS.
09\05\1971	Fox, Charles Rea	Durnell, Debra Jean	6351	L	133	
12\04\1971	Foussard, Charles Arthur	Rose, Lillian Marie	6360	L	142	
12\30\1971	Fawcett, Roy Richard	Halvorson, Shirley Mae	6366	L	148	
05\05\1972	Fultz, Terry Lee	Mills, Lauri Maria	6374	L	156	DIS.
06\16\1973	Faber, Gerald James	Trepina, Judith Sharon	6420	L	202	DIS.
06\23\1973	Fannan, Frank John III	Larson, Carol Ann	6421	L	203	
01\25\1974	Francis, Michael Harlowe	Sibra, Karen Lou	6448	L	230	DIS.

-35-
MARRIAGE RECORDS FOR CHOUTEAU COUNTY

DATE	APPLICANT	BRIDE	LICNU	BKNU	PGNU	NOTE
12\28\1974	Forster, Murray Edwin	Siebenaler, Mary Rose	6498	L	280	
11\26\1976	Frieling, Daryl John	Sink, Karren Lee	6589	L	371	
06\12\1977	Fultz, Thomas Edward	Walborn, Jacquelynn Lee	6620	L	402	
06\17\1978	Fisher, Randall Edward	Eve, Darla Marie	6673	L	455	
07\23\1978	Fultz, Robert Coy	Navarro, Alice Romelle	6683	L	465	
07\02\1980	Fultz, Wilbur Rodger	Hankins, Diana Marie Clark	6774	L	556	
08\23\1980	Fink, Bartley Richard	O'Malley, Margaret Mary	6789	L	571	
06\25\1983	Farwick, Timothy Paul	Ferda, Cindy Sue	6916	M	115	
09\03\1983	Fultz, Terry Lee	Offerdahl, Donita Lucille	6924	M	124	
09\30\1983	Faber, Timothy John	Drew, Colleen Elizabeth	6928	M	128	
07\12\1984	Fuller, Rueben Wayne	Clark, Martha Mae	6957	M	156	DIS.
07\21\1984	Faber, Michael Joseph	Kulbeck, Brenda Lee	6958	M	157	
08\11\1984	Fusk, Leonard James	Qunell, Sarah Louise	6959	M	160	
06\29\1985	Frieling, Danel Hipe	Tacke, Mary Frances	6975	M	194	
11\14\1985	Fuller, Gary Dean	Moore, Denise Kay	7008	M	209	
02\15\1986	Farmer, Robert Arthur	Hays, Cindy Lee	7021	M	220	DIS.
08\23\1986	Feltham, Glenn Douglas	Wigger, Tammara Sherise	7036	M	236	
06\29\1988	Fromm, Hyrum Joseph, Jr.	Steck, Debra Visser	7092	M	289	DIS.
12\14\1989	Fidler, James William	Chafin, Kathryn Louise	7141	M	336	
01\15\1990	Ferebee, Billy Lee	Walker, Aldreena Marie	7144	M	340	
08\04\1990	Ferguson, Jeffrey Scott	Lloyd, Barbara Lynn	7166	M	361	
03\13\1992	Fox, Timothy Andrew	Medean, Kristy Lynn	7212	M	408	

**THANK OF APPREICATION
TO RUBY LANGEL AND UNA MOOG**

This Volume of the Tri-County Searcher is dedicated to Liberty County which was created in 1920. They have celebrated their 75th birthday in Feb., the County Library celebrated 50 years in Jan; VFW and Auxiliary was 50 years in Mar; American Legion 75 years in May; Incorporation of the Town of Chester is 85 years old in Aug; the United Post Office 100 years old in Nov. The material used in Volume 15 No 2 on the Chester Post Office and this issue Volume 16 No1 on the County was researched and compiled by Ruby Langel who has put the material in a book called "Chester Country" which sells for \$62.50. If interested in this book it covers things from early days to the present time. Information taken out of News Papers. It contains 1208 pages. If interested in buying this book or have any questions please call or write Ruby Langel- 2367 Village Square-Missoula, Mt. 59801-Ph 406-542-3150 or Betty Marshall-Box 476-Chester, Mt. 59522-ph. 406 759-5627. A big THANK YOU for doing a great job to of compiling the happenings thur the years. I know it was a big job! Thanks again we appreciate all the work and the consent to use it in our publication.

Also the marriage index from Chouteau County, Fort Benton, Mt. is being transcribed and compiled by Una Moog. I know for a fact what a job this can be to read these records. I want to extent a big thank you and express our appreciation. It is also a lot of work. Thank you Una. The Broken Mountains Genealogical Society are in the process of Transcribing and Compiling the Marriage Records from Chouteau Co. and will let you know when they are ready. Both of these people are members of the Broken Mountains Genealogical Society in Chester, Mt.