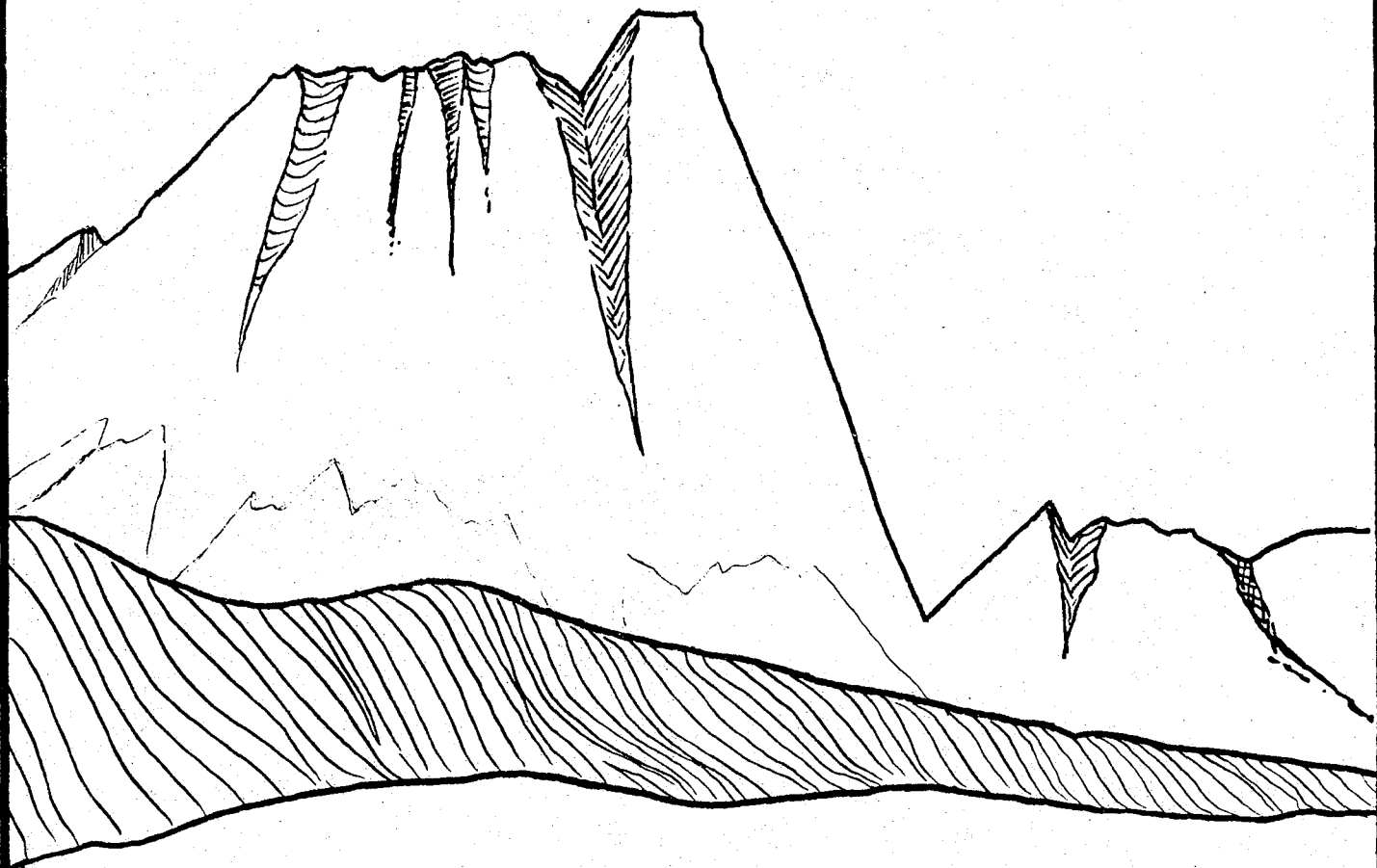


Broken



Mountains

GENEALOGICAL SOCIETY
BOX 261, CHESTER, MT

The Tri-County
Searcher

vol. 5 no. 2

TSS 0742-5015

The Tri-County

SEARCHER

Published by the Broken Mountains Genealogical Society

ISSN 0742-5015

September 1984

Chester, Montana

Volume 5, Number 2



TABLE OF CONTENTS

PRESIDENT' MESSAGE38
GOLD BUTTE TRIP.39
GOLD BUTTE CEMETERY.43
GRANDVIEW CEMETERY45
LIST OF EXCHANGES FOR 198446
FENTON'S HILL COUNTY, MONTANA, DIRECTORY 1915.51
FOUR-GENERATION ANCESTOR CHART, BETTY MARSHALL65
FOUR-GENERATION ANCESTOR CHART, ALICE M. SHEPHERD.67
PRAIRIE INN REGISTER (CONTINUING LISTINGS)70

MESSAGE FROM THE PRESIDENT

Montana is gearing up to celebrate its Centennial in a few years and what a great time that would be for all genealogists to concentrate on their Montana roots! Efforts are being made state-wide to have oral histories made of all our old timers and that makes a search for ancestors much more valuable in years to come. Can you imagine what it would be like to find an oral history of your great grandparents? That would really make history come alive.

It seems that as we get a little older, the past becomes even more important to us. Perhaps it takes maturity to realize that all of our past and our roots makes us who we are now. Finding one's ancestors is not merely recording dates and places, but learning the history of the area and the lifestyle of that area.

I am always fascinated with the long ocean trips the earliest settlers made in unbelievably small ships. And in reading accounts of the rigors of the life they led makes me cringe when I think of all the labor saving devices both men and women have today--and still we feel overworked at times.

I had the privilege in September of doing research in Salt Lake City at the Mormon Genealogical Center. What an experience that was! The vast amount of information found there is mind boggling. I was disappointed that more of their accumulation didn't seem to pertain to me, but at the same time I realize that perhaps I need to learn more how to search and tie together the information I have. How to proceed from step 1 to 2 with the information I have, is really very important. I do hope that you will all have an opportunity to visit that library.

Sharon Aalberg

MEMBERSHIP: Annual dues (payable March 1) \$10.00 for individual membership, \$15.00 family membership. Honorary membership is given to senior citizens. Members are entitled to free query privileges and to one year's subscription to the "Tri-County Searcher" published March and September.

Subscription to publication is \$4.00 per year and \$2.00 for back issues. Non-subscribers wishing to submit queries may at the rate of 5¢ per word. Send queries to Broken Mountains Genealogical Soc. Box #261, Chester, Mt. 59522.

MEETINGS: Meetings are held the first Thursday of every month except July and August, at the Liberty County Library, Chester, Montana, 7:30 p. m.

GIFT AND DONATIONS: The Society welcomes donations of cash or other material, particularly genealogical related. Contributions, gifts and donations are deductible for Federal income tax purposes.

BROKEN MOUNTAIN'S TRIP TO GOLD BUTTE

The Broken Mountains Genealogical Society had long planned a trip to the Sweet Grass Hills' Gold Butte, early day mining area, to research the cemetery and to view the old townsite. This trip had been attempted a previous year. That trip was not finished because of rain which forced us back to safer roads.

On 14 July 1984, we finally made the planned trip. We started out from Chester in a rented school van, our driver, Wayne Wardell, and members, Una Moog, Betty Marshall, Janell Wardell, who grew up in the general area of the Hills, Frances Hochberger, Anna Mae Hanson, and a guest Debbie Huhtala. As pre-arranged, we stopped in Lothair, Montana, and enjoyed breakfast with our tour guide, Austin Stratton and guest of his, Paul Versteven, a friend from Europe.

After breakfast, which we enjoyed outdoors on Austin's deck, we all got into the van and headed for the Sweet Grass Hills, with Austin as our guide. He told us many interesting anecdotes along the way. Paul sat next to the van door. He was thereafter our official doorman for the van's sliding door. This seating arrangement also dictated that he be official gate opener, as we were in cattle country.

We traveled westward to Devon, via U.S. highway No. 2. Devon was formerly called Concord. Because of U.S. mail confusion in the early pioneer days with the name Conrad and Concord being so near alike, the name Concord was changed to Devon. Austin grew up in the 'Hills' area that we were passing through so he could speak from first-hand knowledge, remembrances and experiences; also events related to him by his parents and other relatives.

The crops this year are very bad because of drought and Austin passed on to us one of Ambjorg Scalese's amusing jokes. "Perhaps we'll have Norwegian wheat this year--nothing in the heads. Here I thought Amby was Norwegian!" Austin exclaimed. He commented on the wherefore and why of the need for correction lines, the oil well activity of years gone by compared to present-day drilling practices. He stated that all the old rural school houses in the area have disappeared. Hawthorne School was one in particular that he mentioned. The original Hawthorne school had burned down and was replaced with a steel building. When no longer in use and the school was abandoned, it was purchased and later moved to Joplin by Con May, Austin believed, where it is being used as a residence today.

We traveled the old freight road used by teams of horses to Gold Butte.

This is not the main road used today. On the foothills of West Butte one can see the remaining buildings of the McDermott coal mine. We stopped at the James Woods residence. This is the former Joe Berthelote ranch. Joe was one of the first county commissioners of Hill County when it split from Chouteau County. He was also a government surveyor. We had a pleasant visit with Jim and Norma Woods. They invited us into their home and showed us some old Gold Butte pictures and allowed us to take pictures of their snap shots. Anna Mae used a 2X convertor on her camera and our pictures turned out quite well. Jim and Norma gave us first-hand accounts of Gold Butte in its hey-day. Norma lived some of her childhood in Gold Butte where her father owned the general store.

We passed a spring from which many people had hauled their water. Some people still do get their water there. We passed the old Billy Zebrunky place. Billy had married Agnes Bubnash. Austin understood they had met when they both worked at the old Turner ranch south of Galata. To the east of us was the old Stark place, later owned by Arthur Fey, and is now part of the Gordon Christian ranch. From Christian's lands we progressed to Robert Parsell lands. There had been large bands of sheep and shearing sheds in that area in the early days.

At the Stratton place in the bootlegger days, one could see the lights coming from Gold Butte. Austin's dad would comment on seeing the lights and say, "the bootleggers are busy again". Mr. Stratton was stopped and searched several times for transporting illegal liquor and was very indignant, saying, "You can stop me but you never seem to stop the bootleggers; you make sure of that!".

We stopped at the old Cameron Reservoir. Mr. Cameron was married to Mary Monahan. He died and Mary married Roy Woods in Galata. They had two daughters, Hazel Hannah and Mary Zell. Later Mary married Robert Cockrell and they had one child. They formerly lived in Shelby. Above Cameron 'Lake' stands an old house which was the Appley house. Mrs. Kenneth Leck, of Galata, is the youngest of the Appley's.

We saw some remnants of the old Cameron sheep shearing corrals where they sheared sheep every spring. Lucius Stratton and Chet Parsell were two of the top shearers of the time.

We passed a tall pile of stones on a hill. Austin said it was known as Shepherd's Monument. When the shepherders didn't have anything to do they would gather rocks and pile them high on the hill. This monument was used, then,

many times later as a landmark, especially during blizzards and other inclement weather.

We headed into Gold Butte, passing the old Judge McDowell place. The house has been moved away. One could see old gold mine scars on the hills and remnants of a dam that had long since washed out. There had been a nice lake there at one time. The lake is where Paul Fey drowned many, many years ago. We stopped at the first Gold Butte cemetery, just west of the townsite. We couldn't believe our eyes when we discovered the 'missing' tombstone of Jessie Rowe was back in place at her grave. The tombstone had been taken and was missing for about seven years. (A related story in Broken Mountains Genealogical Society The Searcher, Volume 2, Number 1, March 1981.) Where the tombstone had gone and how it had gotten back, remains a mystery. We later questioned one miner who was panning gold up a near-by gully. He said he had noticed the stone being back there, but didn't know how nor when it had been returned. A few rocks and depressions marked or indicated other graves close at hand.

McHale, Gardipee, Pete Wagner, Pratt were some of the families that had lived there. Wagners came from Dakota and Pratt from Pannsylvania. Austin talked of Pete Wagner shooting the fellow named Pratt for wanting to cross over his land, in about 1911. He got off scott-free but his life didn't go too well after that. He lived through many unfortunate hardships.

We ate lunch at the old Gold Butte site. We noticed several camps of people who are mining or panning for gold there now.

Some evidences of the placements of buildings still remain. We recalled the snapshots shown to us by the Woods' to help re-construct the lay-out of the town in our minds. During lunch time we were joined by Albert and Gloria Fey. This meeting had been pre-arranged by Austin. The Fey's brought along pictures of Gold Butte as it once was. We certainly enjoyed their company and insight into the area. After lunch we journeyed on to the Gold Butte cemetery, about one mile north of the old townsite. It is fenced and quite well kept up. There are a surprising number of graves and one lone pine tree stands guard there making a very picturesque site.

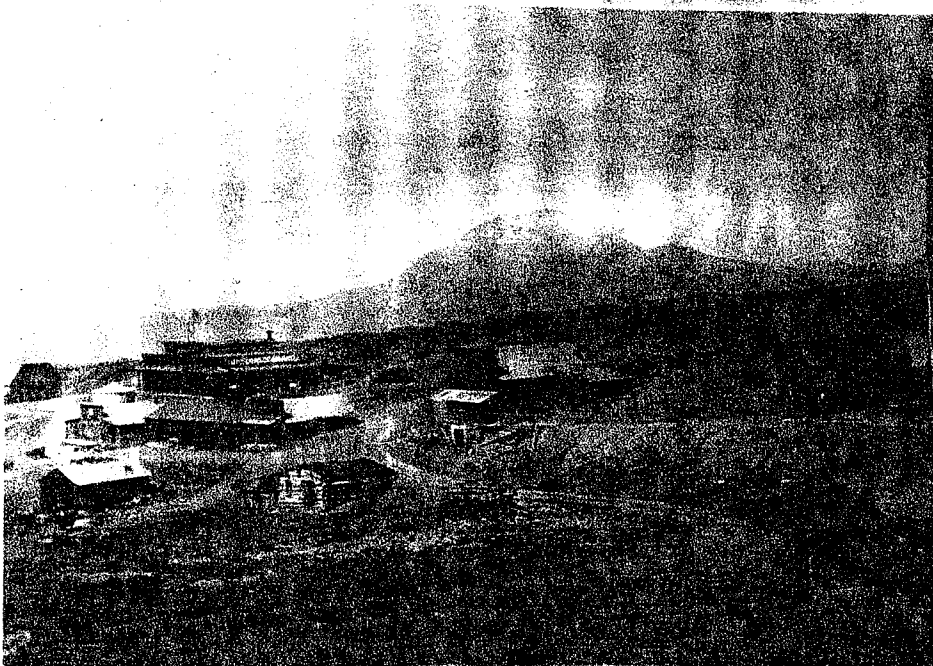
We passed the old McDermott coal mines and visited the Con Price place, one of the earliest ranches in the area. This old log cabin, no longer in use, stands on the Walter Clark ranch. It seems quite well preserved from what we could see from the outside and is well worth seeing. Con Price was a friend,

and I believe, a partner of Charlie Russell, the nationally known western artist and sculptor.

We continued on our journey and passed the Barnes place and Fred Parsell place, then traveled on to Whitlash. Whitlash doesn't have much remaining compared to the early days. The present town location is just a few hundred yards east of the original townsite. There is a post office with Karen Kultgen, the postmaster, several families in town but many in the surrounding area, a church and rectory, community hall, two school buildings, two teachers and two teacher-ages. This is the last rural school in Liberty County. A Port of Entry into Canada is located approximately two miles north of Whitlash. We stopped in the shade of the church to enjoy refreshments before continuing on our way. The new lady pastor of the church visited with us as we relaxed.

We started back toward Galata; the crops all look the same. The hot, dry summer has taken toll. Near the old Forseth place we took a side trip and Austin showed us an old cemetery, called the Grandview cemetery. There are seven graves there and they are all graves of children; they are marked with rocks. Recently, Shelby Boy Scouts put small funeral-home markers on each grave as a community project, we understand.

We arrived in Lothair where we left Austin and Paul, then returned home. We all agreed it was a 'fun and knowledgeable' day. It was also a very productive day as far as historical value and the charting of two cemeteries and the viewing of a third one. Thank you, Austin, for being our guide, Wayne for driving us and Frances for getting the enjoyable lunch arranged and put together.



Gold Butte in the early days
Photo courtesy of Norma and Jim Woods

GOLD BUTTE CEMETERY

Gold Butte cemetery is located in Toole County. From Devon drove 30 miles north to the Christian Ranch. Then turn right and go east 4 miles to Gold Butte. The cemetery is approximately 1 mile north of the old townsite. It is a very nice cemetery and very picturesque with a lone pine tree standing guard. The map location is Township 36N, Section 18, Range 3E.

Marie BARNES
no date

Josie BARNES
born July 17, 1891
died Apr. 27, 1909

Rodney BARNES
b. Feb. 8, 1854
d. Jan. 26, 1925

Mother
Verona BARNES
1860-1946

Wayne BARNES
1893-1941

Robert CHRISTIAN
no date

Betty J. FROMM
1924-1934

John FROMM
1861-1931

Joseph GARDIPEE
1853-1927

William GARDIPEE
1910-1936

Elnore J. LAMMERDING
1921-1980

Isaac LANDRY
1861-1931

Peace Perfect Peace
Bertha Mae McDERMOTT
Nov. 22, 1895
Aug. 29, 1925

Edward J.
McDERMOTT
1902-1977

Ethel V. McDERMOTT
1925-1929

Patrick H. McDERMOTT
1941-1944

Father
Peter H. McDERMOTT
1890-1953

Rosemary McDERMOTT
Nov. 4, 1924
Feb. 27, 1927
A little bud of love
to bloom with God above

William V. McDERMOTT
1932-1978

MORLEY Infant
no dates

Our Beloved Mother
Melvine NELSON
1899-1923

Chet PARSELL
1877-1941

Leonard G.
PARSELL
1904-1940

Leon Edward SANDS
Tec. 4 U.S. Army
World War II
Feb. 19, 1909-Jan. 13, 1979

Archibald SANFORD
1874-1918

Stylam SAYER
no dates

Aleth SIMMONS
no dates

Glenn A. SWENSON
U.S. Army
Sept. 19, 1926-June 27, 1980

Pete WAGNER
1854-1928

Gloria WHITE
no dates

June Elsie YATES
1888-1968

13 Unknown graves

My life is but a weaving
between my God and me,
I do not choose the colors,
He worketh steadily.
Oftimes He weaveth sorrow
and I in foolish pride,
Forget He sees the upper
and I the underside.
Not til the loom is silent
and shuttles cease to fly
Will God unroll the canvas
and explain the reason why.
The dark threads are as needful
in the skillful Weaver's hand
as the threads of gold and silver
in the pattern He has planned.

Anonymous

GRANDVIEW CEMETERY

Grandview cemetery is located in Toole County. From Galata, Montana, drive 19 miles north, on the Galata grade to the Oilmont road. Turn left, go 1 mile west then make another left turn and go 1 mile south. The cemetery is located to your right. The map location is Township 34N, Section 5, S.E. corner, Range 3E.

Baby SHURSON
no date

Elma Florence BROWN
1916-1916

Richard T. STONER
1910-1920

Baby KJOS
1912-1912

Lenore HALES
1914-1916

Baby STROM
1912-1912

Frances HURT
Sept 14-26
1911
Our Darling Baby

The Lost is Found and Returned

In Volume 2, Number 1, page 4 of the Tri-County Searcher there was a story about Miss Jessie Rowe stating that the stone on this grave was missing. On 14 July 1984, some of our society took a trip to the Sweet Grass Hills area and Gold Butte. We found that the stone that was missing is back in place where it belongs. The story as to who took the stone is unknown but it is back where it belongs and reads as follows:

Miss Jessie
ROWE

Born Mar. 9, 1887

Died Sept.30, 1902

Remember me as you pass by
As you are now so once was I
As I am now so you must be
Prepare for death and follow me.

LIST
OF EXCHANGES FOR
1984



These exchanges are housed in the Genealogy section at the Liberty County Library in Chester.

ARKANSAS:

1. "The Arkansas Family History", Arkansas Genealogical Society, 4200 "A" Street, Little Rock, Ark. 72205

Arizona:

2. "Copper State Bulletin", Arizona State Genealogical Society, P.O. Box#42075, Tucson, Arizona 85733-2075

California:

3. "The Searcher", Southern California Genealogical Society, 103 South Golden Mall, Burbank, California 91502
4. Genealogical Society of Medera, P.O. Box # 495, Medera, California 93639-0495
5. "Golden Roots of The Mother Lode", Tuolumne County Genealogical Society, P.O. Box # 3956, Sonora, California 95370
6. Sequoia Genealogical Society Inc., Box # 3473, Visalia, California 93278

Canada:

7. "Relatively Speaking", The Alberta Genealogical Society, P.O.Box# 12015, Edmonton, Alberta, Canada T5J-3L2
8. "Branch Notes", Waterloo-Wellington Branch, Ontario Genealogical Society, P.O. Box# 603, Kitchner, Ontario, Canada N2G-4A2
9. "Bruce & Grey Branch", Ontario Genealogical Society, Box #1606, Port Elgin, Ontario, Canada, NOH-2C0

Colorado:

10. "The Colorado Genealogist", Colorado Genealogical Society, P.O. Box # 9671, Denver, Colorado 80209.

Connecticut:

11. Stamford Genealogical Society, Ferguson Library, 96 Broad Street, Stamford, Connecticut 06901

Florida:

12. "Heritage", Genealogical Society of Greater Miami, P.O. Box # 541607, Opa-lacka, Florida 33054

Con't List of ExchangesIdaho:

13. "The IGS Quarterly", Idaho Genealogical Society, Inc.,
2373 Old Penitentiary Rd., Boise, Idaho 83702

Indiana:

14. "Michiana Searcher", Elkhart County Genealogical Society,
1812 Jeanwood Drive, Elkhart, Indiana 46514

Iowa:

15. DesMoines County Genealogical Society, P.O. Box #493,
Burlington, Iowa 52601
16. Key City Genealogical Society, P.O. Box # 13, Dubuque,
Iowa 52001
17. "The Ill-Ia-Mo-Searcher", Mrs. Mary Alma Kay, R. R. # 1,
Box # 182, Keokuk, Iowa 52632
18. NorthWest Iowa Genealogical Society, LeMars Public Library,
46 First Street S. W., LeMars, Iowa 51031
19. "Genie Bug", North Central Iowa Genealogical Society, P.O.
Box # 237, Mason City, Iowa 50401-0250

Kansas:

20. "The Seeker", Crawford County Genealogical Society,
Pittsburg Public Library, 211 West Fourth Street,
Pittsburg, Kansas 66762

Kentucky:

21. "The East Kentuckian", Clayton Cox, Editor, Box # 24202,
Lexington, Kentucky 40524

Michigan:

22. The Flint Genealogical Society, P.O. Box # 1217, Flint,
Michigan 48501

Minnesota:

23. "Branching Out", Twin Ports Genealogical Society, P.O.
Box #6895, Duluth, Minnesota 55806
24. Olmsted County Historial Society, P.O. Box # 6411, Rochester,
Minnesota 55903
25. St. Cloud Area Genealogists Inc., P.O. Box #213, St. Cloud,
Minnesota 56302-0213

Con't List of ExchangesMissouri:

26. St. Louis Genealogical Society, 1695 So. Brentwood Blvd., Suite 203, St. Louis, Missouri 63144
27. "The Prairie Gleaner", West Central Missouri Genealogical Society & Library Inc., Mr. Gale Yocum, Editor, Twin Cedars, R. R. # 3, Warrensburg, Missouri 64093

Montana:

28. "The Gen-Bug News", The Yellowstone Genealogy Forum, c/o Parmly Billings Library, 510 North Broadway, Billings, Montana 59101
29. "Gallatin Trail", Gallatin Genealogy Society, Box # 1783, Bozeman, Montana 59715
30. "Treasure State Lines", Great Falls Genealogy Society, Paris Gibson Square, 1400 1st Ave North, Great Falls, Montana 59401
31. Big Horn Genealogical Society, 616 North Cody, Hardin, Montana 59034
32. "Smoke Signals", Assiniboine Genealogical Society, Box # 321, Havre, Montana 59501
33. Lewis & Clark County Genealogical Society, P.O. Box # 5313, Helena, Montana 59604
34. "Trees & Trails", Flathead Valley Genealogical Society, P.O. Box #584, Kalispell, Montana 59901-0584
35. Lewistown Genealogy Society, 701 West Main, Lewistown, Montana 59457
36. Western Montana Genealogical Society, P.O. Box # 2714, Missoula, Montana 59807
37. Montana Oral History Newsletter, c/o Mansfield Library, University of Montana, Missoula, Montana 59812

Nebraska:

38. "Nebraska Ancestry", N. E. State Genealogical Society, P.O. Box #756, Alliance, Nebraska 69301

North Dakota:

39. Bismark-Mandan Historical Genealogical Society, Box # 485, 2708 N. 4th St., Bismark, North Dakota 58505

Con't List of Exchanges

40. "North Central North Dakota Genealogical Record", Mouse River Loop Genealogy Society Library, Box # 1391, Minot, North Dakota 58702-1391

Ohio:

41. "The Certified Copy", The Greater Cleveland Genealogical Society, Box # 40254, Cleveland, Ohio 44140-254

Oregon:

42. Oregon Genealogical Society, P.O. Box #10306, Eugene, Oregon 97440-2306
43. Coos Genealogical Forum Bulletin, Coos Genealogical Forum Library, P.O. Box #1067, North Bend, Oregon 97459
44. Genealogical Forum of Portland, Neighbors of Woodcraft Bldg. Suite 812, 1410 SW Morrison St., Portland, Oregon 97205

South Dakota:

45. "The Tree Climber", The Aberdeen Area Genealogical Society, P.O. Box #493, Aberdeen, South Dakota 57401
46. "The Pierre", Fort Pierre Genealogical Society, Box # 925, Pierre, South Dakota 57501
47. South Dakota Genealogical Society, Box # 873, Pierre, South Dakota 57501
48. "Black Hill Nuggets", Rapid City Society for Genealogical Research, Box # 1495, Rapid City, South Dakota 57701
49. "Pioneer Pathfinder", Sioux Valley Genealogical Society, Box # 655, Sioux Falls, South Dakota 57101
50. South Dakota Genealogical Society, Mrs. Dorothy A. Sargent, SDGS Library Chairman, R.R. 2, Box # 148, Wolsey, South Dakota 57384

Texas:

51. Montgomery County Genealogical Society Inc., P.O. Box # 751, Conroe, Texas 77305-0751
52. "The Quarterly", Genealogy Exchange Periodical Asst., Dallas Public Library, 1515 Young Street, Dallas, Texas 75201

Washington:

53. Seattle Genealogical Society, P.O. Box # 549, Seattle, Washington 98111

Con't List of ExchangesWisconsin:

54. "Milwaukee County Genealogical Society Reporter", Milwaukee County Genealogical Society Inc., P.O. Box # 27326, Milwaukee, Wisconsin 53227

Complimentary Copies:

1. Great Falls Public Library, c/o Genealogy Dept., Great Falls, Montana 59401
2. Montana Historical Society Library, 255 N. Roberts St., Helena, Montana 59601
3. Newspapers and Periodical Unit, State Historical Society, 816 State Street, Madison, Wisconsin 53706
4. Library of Congress, Exchange and Gift Division, Washington, D. C. U. S. A. 20540
5. Acquisitions- Serials, Genealogical Department, 50 East North Temple, Salt Lake City, Utah 84150

Subscriptions:

1. The Genealogical Helper
2. National Genealogical Society Quarterly
3. The Second Boat

Subscribers to the Tri-County Searcher:

Mildred Blackstone, Box # 2272, Mesa, Arizona 85204
 Violet Broadhurst, Star Route, Box # 56, Ledger, Montana 59456
 Lilly Fritz, Box # N, Chester, Montana 59522
 Shirley Lybeck, Chester, Montana 59522
 Ona Mae Schwan, Box # 196, Lothair, Montana 59461
 Alida E. Snuffer, Box # 204, Lothair, Montana 59461
 Maxine Ward, Box # 233, Chester, Montana 59522
 Bob Wigen, 610 Copper Court, Great Falls, Montana 59405



FENTON'S HILL COUNTY DIRECTORY
CLASSIFIED LIST OF HOMESTEADERS

Not Having Proved Up Prior to March, 1915

Name.	P. O.	S. T. R.	Val.
AASE, Alfred Olson.....	Havre	1-35-16	20
AARDEL, Gyda	Havre	29-34-17	25
AABERG, Lars.....	Havre	5-34-14	20
AASE, John.....	Rudyard.....	5-30- 9	25
AAFELDT, Jorn.....	Hingham.....	6-30-11	315
AAFELDT, Iver.....	Fresno.....	32-32-14	330
AAGSON, Otto.....	Fairchild.....	22-37-11	25
AAGSON, Osmund.....	Fairchild.....	27-37-10	350
ACHATZ, Ralph.....	Havre.....	23-32-17	25
ACISON, Bill.....	Havre.....	29-33-14	475
ACKER, Webster.....	Hingham.....	13-31-10	65
ACKERMAN, K. L.....	Cottonwood.....	13-35-12	230
ACME, Harvester Co.....	Peoria, Ill.		400
ADAMS, J.	Chester	27-34- 5	452
ADAMSKI, Geo.	Chester	17-30- 7	180
ADAMS, Frank	Hingham	11-30- 9	40
ADAMS, Frank	Brinkman	14-29- 8	115
ADAMS, C. L.	Brinkman	14-29- 8	420
ADAMS, Richard	Brinkman	15-29- 8	20
ADAMS, W. M.	Fresno	7-31-14	150
ADAMSON, P. E.	Joplin	35-32- 7	300
ADAMS, Chas. M.	Inverness	13-33- 8	397
ADDINGTON, I. J.	Gildford	6-34-12	30
ADAMS, Maurice	Cottonwood	4-37-14	20
AGLE, Ben	Miller	28-36-13	20
AHLGREN, Olaf	Lothair	31-33- 4	50
AINLEY, Albert	Chester	9-30- 6	30
AINLEY, John	Chester	9-30- 6	100
AINLEY, Mrs. E. A.	Chester	5-30- 6	35
AKSDAL, Steve	Inverness	27-30- 8	30
AKER, B. B.	Gildford	18-32-11	435
AKER, Chas.	Box Elder	20-30-12	25
ALLEN, Fred B.	Gildford	13-31-11	789

Classified List of Homesteaders

Montana Fenton's Hill County Directory 1915

Name	P. O.	S. T. R.	Val.
ALMAS, Nels	Rudyard	12-34- 9	90
ALFDAHL, Kute	Rudyard	29-33- 9	515
ALEX, Toney	Rudyard	23-34- 9	330
ALTERMAT, Geo.	Lothair	7-31- 5	350
ALTERMAT, Frank	Lothair	7-31- 5	525
ALLEN, Frank	Buelow	30-33- 7	310
ALBERTSON, Alfred	Kremlin	17-33-13	910
ALLEGER, D. G.	Fresno	29-32-14	255
ALLEN, Albert	Casady	17-34-17	285
ALBRIGHT, L. F.	Big Sandy	29-30-11	25
ALLINSON, John	Selma	33-29- 4	40
ALLEN, Claude	Cottonwood	26-35-13	25
ALBRECHT, Dora	Phipps	15-37-15	20
ALBERT, Otto	Phipps	9-36-17	20
ALFSON, Chas.	Phipps	6-37-16	40
AMUNDSON, Victor	Havre	28-35-15	210
AMUNDSON, Knute	Havre	24-35-16	380
AMUNDSON, Minnie	Havre	23-35-16	25
AMUNDSON, Bertha	Havre	25-35-16	25
AMUNDSON, Emil	Gildford	23-31-11	75
AMUNDSON, Otto	Joplin	21-33- 7	1000
AMUNDSON, Ole	Anetta, N. D.	26-35-16	25
AMB, Mrs. R.	Inverness	5-33- 8	75
ANTOL, Jos.	Havre	9-33-17	125
ANDERSON, Erick	Havre	34-35-13	70
ANDERSON, Carl	Havre	15-35-15	20
ANDERSON, Henry	Havre	3- 35-15	20
ANDERSON, Andrew F.	Havre	7-35-15	125
ANDERSON, Albert	Havre	7-35-17	20
ANDERSON, Art and Theo.	Havre	4-37-13	460
ANDERSON, Agnes Kidd	Havre	18-33-15	50
ANDERSON, Jens,	Havre	19-33-15	150
ANDERSON, Julius	Havre	9-33-15	520
ANGLIN, Mrs. Mike	Chester	14-30- 7	100

Classified List of Homesteaders

Montana Fenton's Hill County Directory 1915

Name	P. O.	S. T. R.	Val.
ANGLIN, Mike	Chester	19-31- 7	200
ANFINSON, R. J.	Chester	22-34- 6	40
ANDERS, A.	Chester	9-34- 5	100
ANDERSON, Lars	Chester	33-34- 5	25
ANDERSON, P. T.	Joplin	25-31- 6	50
ANDERSON, Harry	Joplin	17-30- 8	25
ANDERSON, Joe	Joplin	26-30- 7	25
ANDERSON Freman	Joplin	14-30- 7	30
ANDERSON, Peter	Joplin	27-31- 7	510
ANDERSON, Andrew	Joplin	27-31- 7	154
ANDERSON, E. C.	Joplin	12-32- 7	365
ANDERSON, Simon C.	Joplin	14-32- 7	605
ANDERSON, Roy	Joplin	8-33- 8	150
ANDERSON, F. G.	Box Elder	34-31-12	40
ANDERSON, Wm.	Box Elder	30-30-12	25
ANDERSON, Carl T.	Inverness	26-33- 8	60
ANDRIST, Fred	Gildford	11-31-10	340
ANDERSON, Dan	Gildford	13-31-11	295
ANDERSON, Chris	Gildford	34-31-11	517
ANDERS, John	Gildford	6-33-11	30
ANDERSON, Hans D. M.	Gildford	10-32-11	420
ANDERSON, Arthur	Lothair	29-34- 4	35
ANDERSON, Andrew	Lothair	29-34- 4	35
ANDERSON, Alfred	Lothair	14-32- 4	50
ANDERSON, Selma	Lothair	22-32- 4	30
ANDERSON, H. A.	Rudyard	31-32- 9	115
ANDERSON, O. Andurs	Kremlin	20-33-13	550
ANGUS, Harvey	Sage	21-36- 9	335
ANGUS, Nettie	Sage	15-36- 9	35
ANDERSON, Clara	Amos	1-36-14	25
ANSTINE, H. I.	St. Joseph	33-36-16	20
ANDRUS, Forest	St. Joseph	25-36-15	275
ANDERSON, Thorvald M.	Cottonwood	22-35-13	245
ANNIS, Richard	Cottonwood	21-36-13	465

Classified List of Homesteaders

Montana Fenton's Hill County Directory 1915

Name	P. O.	S. T. R.	Val.
ANDRUS, S. M.	Burnham	12-32-14	25
ANDERSON, Algot.	Hill	8-34- 4	40
ANDERSON, C. O.	Alma	23-36- 7	1910
ANDERSON, Theodore	King	7-36- 8	50
ANDERSON, Steve	King	28-37- 8	285
ANDERSON, Clara	Plentywood	21-35-15	20
AINLEY, Arthur	Chester	8-30- 6	30
APPLE, John	Box Elder	28-30-12	25
ARNTZON, Carl	Havre	29-36-15	20
ARMSTRONG, Theo.	Chester	6-30- 7	80
ARICK, Alex	Chester	28-33- 5	272
ARTHUR & AINLEY	Chester	8- 30- 6	470
ARONON, Bons	Gildford	7-33-11	840
ARNDT, Nick	Gildford	13-35-11	25
ARNOLD, N. J.	Burnham	3-33-14	265
ARNTZEN, Alm.	Miller	28-36-13	20
ARNTZEN, Sigud	Miller	29-36-16	20
ARMSTRONG, Sam	Sage	28-35- 9	315
ARNETT, Wm.	Phipps	17-37-17	20
ARMSTRONG, Emma	Havre	5-32-16	722
ARMSTRONG, Homer	George	25-30- 6	30
ARCHER, A. G.	Whitlash	5-37- 6	40
ARNOLD, Joe	Chinook	15-32-17	50
ASPVIG, Herbert	Hingham	15-30- 9	25
ATKINSON, Harry	Havre	19-34-17	125
AVERY, Andy	Kremlin	34-33-12	360
AUSK, Ralph O.	Simpson	26-37-11	25
AUSK, Chas.	Simpson	26-37-11	425
AUSK, Clifford	Simpson	27-37-11	35
AULD, Margaret	Havre	18-34-17	30
AULD, Hazel	Havre	24-34-16	20
AUSK, Eltel	Havre	35-37-11	20
AUSTIN, M. G.	Sage	24-36- 8	667
AUBRECHT, Adolph	Hingham	23-30- 9	25

Classified List of Homesteaders

Montana Fenton's Hill County Directory 1915

Name	P. O.	S. T. R.	Val.
AXVIG, O. G.	Fresno	15-32-13	410
BADER, Alex	Chester	14-33- 5	180
BARRINGER, Roy	Sage	25-35- 8	60
BAUGH Bros.	Havre	14-33-14	505
BADER, John	Chester	24-33- 4	790
BANGS, W. W.	Sage	10-36- 8	330
BANGS, H. R.	Sage	22-36- 8	40
BANGS, W. D.	Sage	11-36- 8	335
BARNS, Glenn	Gildford	1-34-11	25
BARTON, Myrtle	Gildford	18-35-11	580
BARTON, Jack C.	Gildford	24-36-10	30
BAKKE, P. A.	Gildford	25-32-11	1304
BAJAR, Geo.	Chester	22-34- 5	40
BANER, Lucas	Chester	33-30- 7	600
BARNARD, Mrs. I.	Chester	26-30- 5	50
BARTLETT, E. C.	Chester	20-34- 5	40
BARTLETT, Geo. W.	Chester	20-34- 5	230
BAKER, G. C.	Joplin	7-30- 8	50
BALLINGER, Adam	Joplin	17-34- 7	130
BARRY, Jim.	Joplin	33-34- 7	40
BAAKE, Miss Theo.	Joplin	21-34- 8	40
BAILEY, F. L.	Joplin	14-30- 7	25
BATTLESON, T. W.	Inverness	28-30- 8	10
BATTLESON, Andrew W.	Inverness	28-30- 8	25
BARRINGER, C. J.	Inverness	3-32- 8	490
BAILEY, Geo.	Rudyard	21-30- 9	175
BALLENTINE, E. P.	Rudyard	17-33- 9	590
BAKKEN, A. R.	Hingham	2-31-10	25
BANKS, W. D.	Hingham	15-33- 9	100
BAILEY, Fred	Lothair	5-30- 6	35
BATHKE, E. A.	Lothair	21-30- 5	300
BARROW, J.	Box Elder	15-30-11	235
BARROW, H. L.	Box Elder	10-30-11	135
BANGS, R. H.	Box Elder	26-30-12	330

Classified List of Homesteaders

Montana Fenton's Hill County Directory 1915

Name	P. O.	S. T. R.	Val.
BANGS, J. H.	Box Elder	26-30-12	210
BALDWIN, H. A.	Alma	2-35-7	235
BARZEE, A. L.	Alma	8-36-7	400
BARZEE, Clifford L.	Alma	8-36-7	115
BALL, W. F.	Kremlin	34-32-12	275
BANKS, Speneer C.	Kremlin	13-32-12	525
BAKER, Will	Kremlin	21-34-12	25
BAN, Mathias	Kremlin	2-31-13	30
BARROW, J. B.	King	2-37-8	420
BAZELEY, Thomas	Selma	26-29-4	25
BARLEOW, W. R.	Beatrice	30-30-5	715
BARTOS, John	Goldstone	13-35-9	250
BARRY, Ike	Fairchild	35-37-10	120
BALDWIN, E. S.	Simpson	4-36-12	220
BAILLION, Mytro	Phipps	24-37-16	25
BAKER, G. W.	Phipps	27-37-16	20
BAKER, Wm. G.	Phipps	34-37-16	30
BARNES, Chas. H.	Fresno	31-32-14	320
BACHELOR, Harry	Fresno	14-33-13	365
BAKER, Wm. V.	Big Sandy	27-30-11	50
BARNES, Millie O.	Galata	7-34-4	40
BARTLEY, A. W.	Deer Lodge	22-36-14	25
BARRINGTON, Mrs.	St. Joseph	2-35-15	20
BANDY, F. W.	Phipps	4-36-16	20
BEISEKER, Chas.	Havre	18-33-17	235
BEAR, Sarah	Havre	11-34-15	20
BERTHOLF, Aaron	Havre	33-31-16	155
BELL, Albert T.	Havre	33-32-17	50
BELL, C. A.	Havre	34-32-17	40
BECK, Henry	Burnham	21-32-14	50
BERDAL, Lars	Fresno	8-31-14	25
BEILKIE, Henry	Fresno	25-32-13	25
BEILKIE, Wm.	Fresno	25-32-13	1501
BEILKIE, Frank	Fresno	24-32-13	85

Classified List of Homesteaders

Montana Fenton's Hill County Directory 1915

Name	P. O.	S. T. R.	Val.
BECK, John	Fresno	20-32-14	40
BENGTSON, Carl	Joplin	4-30-7	40
BERGERUD, Martin	Joplin	19-31-8	405
BECWAR, E. R.	Hingham	26-33-10	185
BECWAR, A. J.	Hingham	2-32-10	860
BENEDICT, A. J.	Hingham	14-31-10	410
BERLONG, M. O.	Hingham	18-31-11	50
BEECHER, Hattie	Gildford	35-36-11	70
BENNETT, Aron	Gildford	10-30-11	35
BERNHARD, X.	Gildford	32-33-12	50
BERNHARD, Imogene	Gildford	36-33-12	25
BERNHARD, John	Gildford	30-33-12	945
BECHER, Justus	Gildford	33-36-11	730
BECHER, Ernest	Gildford	12-35-11	325
BECHER, Emil	Gildford	-36-11	250
BENSON, O. K.	Gildford	21-31-11	75
BERGER, Bertha M.	Kremlin	27-32-12	25
BESCH, Fred	Kremlin	10-31-13	25
BERGMAN, G. R.	Kremlin	22-34-12	75
BERGLIN, Emil	Kremlin	32-32-13	25
BERGLIN, J. O.	Chester	20-32-6	250
BETON, John	Chester	22-33-5	265
BERRYMAN, Vern	Chester	7-30-6	25
BEVAN, J. E.	Chester	27-34-6	890
BERGER, Peter	Chester	29-32-5	455
BERG, Martin	Chester	25-31-5	30
BERGLIN, Martin	Kremlin	32-32-13	150
BEAUREGARD, J. J.	Inverness	21-31-8	130
BEIER, John J.	Inverness	9-30-8	540
BELOW, A. T.	Inverness	34-31-8	25
BERGER, Art	Inverness	12-33-8	50
BERGULAND, E. E.	Box Elder	21-31-13	40
BELLRUD, C. A.	Box Elder	31-30-13	75
BENNETT, F. G.	Box Elder	17-31-12	600

Classified List of Homesteaders

Montana Fenton's Hill County Directory 1915

Name	P. O.	S. T. R.	Val.
BERG, Knute H.	Beatrice	1-29- 4	415
BERG, Marie H.	Beatrice	12-29- 4	30
BERG, Christ H.	Beatrice	12-29- 4	775
BERG, Peter H.	Beatrice	12-29- 4	72
BERG, Olga	St. Joseph	19-36-17	20
BERG, O. E.	St. Joseph	30-36-17	90
BELLER, C. F.	Simpson	5-36-12	100
BENNER, Geo.	Cottonwood	21-35-14	20
BEKKERUS, Gilbert	Alma	-36- 7	410
BERRY, C. P.	Sage	17-35- 9	455
BELFIELD, E. W.	King	34-37- 8	480
BEASY, Paul	Amos	13-36-14	20
BECHMAN, J. T.	Amos	9-35-14	200
BECKMAN, Dietrich	Amos	15-37-14	20
BERLAND, Olaf	Amos	35-37-14	20
BERGREN, Wilbert	Miller	29-37-13	35
BEMER, Henry	Phipps	35-37-16	20
BERGSLIN, Sigfred	Rudyard	1-33- 9	30
BENSON, Ole	Alma	28-37- 7	35
BECK, John M.	Casady	8-34-17	25
BENICK, Anton	Goldstone	32-37-10	360
BERGE, Ed.	Goldstone	20-37- 9	210
BIELAN, Herman	Kremlin	14-33-13	40
BIXBY, Tracy	Kremlin	25-32-12	25
BIXBY, Wm.	Kremlin	31-32-13	1340
BILLINGS, Mark E.	Gildford	33-31-11	25
BILLINGS, John	Gildford	1-30-11	25
BILLINGS, Chas. G.	Gildford	28-31-11	1095
BILLEK, John	Rudyard	13-30- 8	205
BILLEN, Martin	Inverness	17-30- 8	25
BIRD, James A.	Box Elder	26-31-12	475
BIRCH, Roy	Joplin	6-31- 7	50
BINDER, R. B.	Amos	33-36-14	380
BISHOP, Allen	Cottonwood	7-35-13	20

Classified List of Homesteaders

Montana Fenton's Hill County Directory 1915

Name	P. O.	S. T. R.	Val.
BIEBER, Frederick	Chester	24-31- 5	252
BISHOP, W. E.	Lothair	10-30- 4	40
BICKLE, Herb	Brinkman	13-29- 8	165
BJERKE, Christ	Phipps	35-36-15	20
Bjormstad, Carl	Alma	10-36- 7	410
BJORNSGAARD, M. H.	Kremlin	26-32-12	25
BJERTNES, Andrew	Chester	25-32- 6	215
BLOUGH, C. E.	Havre	32-36-17	30
BLOEMKER, Mary	Lothair	9-32- 4	40
BLACKWOOD, W. T.	Brinkman	11-29- 8	185
BLACKMAN, Carley	Gildford	20-32-12	135
BLOWERS, A.	Alma	25-36- 6	60
BLOMQUIST, Alvin	George	6-29- 7	25
BLANCHARD, Sumner	Kremlin	32-35-12	25
BLAIR, Wm. H.	Kremlin	33-33-13	200
BLANCHARD, Myrtle	Sage	20-36- 9	40
BLANCHARD, Roland	Sage	7-35- 9	35
BLACKMAN, F. C.	Chester	2-33- 6	555
BLEVINS, E. Lee	Whitlash	3-36- 4	50
BLADES, E. J. Mrs.	Whitlash	13-36- 4	275
BLUNDEN, Arthur	Miller	21-36-13	25
BOUCHER, Chas.	Havre	6-29-17	155
BONNEAU, Ramie	Havre	18-29-17	25
BODING, Christine	Havre	10-32-16	485
BOND, Archie T.	Havre	17-35-17	20
BOYD, Fine	Havre	2-33-16	105
BOLME, Mary	Havre	7-33-15	75
BOSTRACK, John	Havre	2-33-16	605
BOSTRACK, Marie	Havre	3-33-16	45
BOULLION, Nick	Joplin	31-33- 7	255
BOELTER, T. H.	Hingham	9-34-10	335
BOSEN, Julius	Trommer	10-34- 4	35
BORG, Oscar	Beatrice	30-30- 4	15
BOLMA, E.	Hill	22-34- 5	270

Classified List of Homesteaders

Montana Fenton's Hill County Directory 1915

Name	P. O.	S. T. R.	Val.
BOWER, J.	Lothair	2-31- 4	125
BOLSTAD, Peter	Lothair	21-31- 5	25
BOTTEN, James	Lothair	7-30- 5	165
BORTON, J. K.	Oscar	14-31-16	295
BOWEN, F. C.	Chester	31-31- 7	676
BORYS, Stanley	Chester	4-29- 7	60
BOONE, A. A.	Chester	7-32- 6	275
BORDE, Anton	Box Elder	15-31-12	265
BORLOCK, Harry	Box Elder	4-30-13	25
BOGNIS, James	Chester	5-32- 6	160
BOETTGER, Rudolph	Phipps	7-37-16	185
BOYCE, Geo.	Amos	17-36-15	20
BOTTGER, Albert.....	Amos	10-35-14	25
BORTVEDT, Sam	Pondera	29-29- 4	65
BORTVEDT, A. R.	Pondera	30-29- 4	25
BOURNE, Chas.	Gildford	7-34-12	120
BORTVEDT, Berge	Pondera	28-29- 4	310
BOURNE, Will	Gildford	6-34-12	75
BOE, Lars	Gildford	28-35-12	320
BORISON, Henry	Rudyard	2-34- 9	55
BOOTH, Leslie G.	Kremlin	32-33-13	370
BOHLIG, E. C.	Kremlin	13-32-13	192
BROADWATER PEPIN Co.	Havre		9625
BROADWATER, Harry	Havre	-31-16	830
BROOKE, Thomas A.	Havre	32-36-16	30
BRONSON, Kimbal	Havre	6-36-16	295
BRITTON, A. L.	Havre	18-31-16	136
BROOKS, Mrs. W. F.	Havre	4-33-14	45
BROOKS, W. F.	Havre	32-34-14	180
BRYSON, Albert	Havre	34-34-16	310
BRANDEN, W. G.	Havre	27-33-15	305
BRADLEY, Tom	Havre	15-36-15	20
BROWN, W. W.	Havre	10-34-16	75
BROWN, Herbert	Havre	24-33-15	250

Classified List of Homesteaders

Montana Fenton's Hill County Directory 1915

Name	P. O.	S. T. R.	Val.
BROWN, Chas. L.	Havre	13-34-15	275
BROWN, Dora A.	Havre	18-34-16	25
BRUBAKER, E. J.	Kremlin	19-34-12	220
BROWN, James C.	Kremlin	2-31-13	22
BRUCE, Geo. E.	Kremlin	35-32-12	357
BRUCE, J. E.	Kremlin	2-31-12	160
BROWN, Robt.	Chester	22-33-6	40
BROCKELSBY, Thomas	Fresno	22-32-14	25
BRIGHT, Thomas A.	Joplin	7-35-8	140
BRYDAHL, Nels	Joplin	7-30-8	30
BRANDT, T. M.	Joplin	13-32-7	595
BRYANT, Wm.	Hingham	26-31-10	330
BREWER, G. W.	Hingham	8-31-10	1100
BROWN, Geo.	Hingham	11-33-10	714
BREVIK, O. N.	Hingham	22-32-10	562
BREDIDAHL, Oscar	Hingham	13-33-10	165
BREDIDAHL, Carl	Hingham	2-33-10	715
BRANDT, Gust	Hingham	5-32-10	435
BRADY, Lebo E.	Gildford	31-33-12	360
BROWN, J. W.	Gildford	32-36-11	725
BREZINOVE, Marie	Gildford	5-32-12	25
BROWNLEE, J. R.	Gildford	6-31-11	507
BROWER, Jacob	Rudyard	35-32-9	365
BRANDVOLD, Adolph	Rudyard	34-31-9	255
BRANDVOLD, John	Rudyard	35-31-9	365
BROWN, A. C.	Rudyard	33-33-9	40
BROTTEN, Nels	Rudyard	18-30-9	25
BRADBERRY, Ed.	Rudyard	15-33-9	365
BRADBERRY, Augusta	Rudyard	15-33-9	385
BRADBERRY, C.	Rudyard	3-33-9	480
BROWN, Wm.	Box Elder	9-30-14	295
BROATEN, Olaf	Box Elder	10-31-12	60
BRANDON, Amund	Amos	22-35-14	80
BRIGHTWEISER, Chas.	Amos	17-35-14	282

Classified List of Homesteaders

Montana Fenton's Hill County Directory 1915

Name	P. O.	S. T. R.	Val.
BROWN, L. I.	Amos	4-35-14	220
BRYERS, Joseph	Amos	25-35-14	85
BROWN, S. M.	Inverness	8-34- 8	675
BROWN, J. R.	Inverness	32-33- 8	382
BROWN, I. M.	Inverness	19-31- 9	180
BROWN, Chas. A.	Inverness	5-30- 8	530
BREDAL, John	Inverness	34-30- 8	25
BRAUN, Nick	Goldstone	8-37-10	25
BRAUN, Joseph	Goldstone	17-37-10	360
BRIGGS, Fred	Lothair	14-30- 5	35
BRIGGS, Worey	Lothair	14-30- 5	30
BRIGGS, Wm.	Lothair	10-30- 5	30
BROKKE Carl	Lothair	33-33- 4	190
BRABANDER, Edw.	Lothair	28-32- 4	80
BROWNING, C. W.	Fairchild	5-36-11	510
BRANDER, Iver	Fairchild	22-37-10	25
BRUMHOLD, Percy	Phipps	4-37-16	20
BRUHALM, Fred	Phipps	14-37-15	20
BRUHALM, Wm. F.	Phipps	15-37-15	105
BRATSCH, Chas	Phipps	5-37-16	95
BRATSCH, Walter	Phipps	5-37-16	20
BRIGGS, W. H.	Phipps	14-36-16	140
BRIGGS, W.L.	Phipps	14-36-16	25
BROWLER, Wm.	George	1-29- 6	20
BRAIN, Sam'l.	George	35-30- 6	635
BRAIN, Olaf	George	25-30- 6	30
BROWN, Henry	Cottonwood	1-36-13	90
BRESTER, John	Cottonwood	7-35-13	20
BRADY, Joe	Cottonwood	14-34-13	205
BRINKMAN, Ruth	Brinkman	3-29- 8	625
BRIDGES, Geo. and Son	Brinkman	12-29- 8	344
BROWN, A. B.	Brinkman	28-30- 8	175
BRIDGES, Geo. T.	Brinkman	12-29- 8	60
BRENNAN, John	Simpson	8-37-13	60

Classified List of Homesteaders

Montana Fenton's Hill County Directory 1915

Name	P. O.	S. T. R.	Val.
BREVICK, Christ	Trommer	5-33- 4	35
BROWN, Clyde E.	Simpson	11-37-11	240
BRADSHAW, Victoria	Simpson	20-36-12	20
BRENNAN, Thomas	Alma	23-37- 7	270
BROWNL, Christine	Selma	9-29- 4	60
BRADY, N. E.	Grandview	30-34- 4	25
BROWN, Elmer M.	Whitlash	24-37- 4	260
BRAUN, Rudolph	St. Joseph	26-36-15	90
BROOKE, Julus	Galata	30-31- 4	300
BRANDL, Amelia	Washburn	21-33-15	25
BURKETT, Frederic	Havre	15-33-15	190
BURWELL, Edw. S.	Havre	32-35-14	85
BURBANK, Edw. W.	Havre	2-31-16	195
BUNTON, Alex	Havre	7-37-15	190
BUTTERFIELD, H. C.	Havre	12-36-15	25
BUTTREY, F. A. Co.	Havre	9-32-16	800
BUCK, W. A.	Havre	23-34-14	60
BUSHFIELD, Geo	Gildford	31-32-12	25
BUSHFIELD, Tom	Gildford	29-32-12	220
BUCK, Ray E.	Joplin	12-29- 7	25
BUCK, Louis C.	Joplin	2-29- 7	25
BUFFINGTON, M. T.	Joplin	15-33- 7	1005
BUSKERUD, Henry J.	Joplin	30-31- 7	40
BURNS, Ira	Joplin	11-32- 7	720
BUCK, Iva	Joplin	11-29- 7	30
BURKE, Mrs. John	Chester	9-30- 7	50
BUCKI, Frank	Chester,	2-29- 7	65
BURUD, Oscar J.	Rudyard	30-30- 9	430
BUSHART, C.	Rudyard	12-30- 8	35
BUTTON, C. B.	Box Elder	22-30-12	452
BUELING, Geo.	Box Elder	17-30-14	210
BUFORD, Many	Inverness	14-34- 8	40
BUCK, E. W.	Inverness	18-34- 8	200

Classified List of Homesteaders

Montana Fenton's Hill County Directory 1915

Name	P. O.	S. T. R.	Val.
BUCK & TONER	Inverness	-34- 8	200
BULLMAN, Arthur J.	Inverness	34-33-13	635
BUMP, Geo.	Lothair	12-30- 4	20
BUSH, Simon	Goldstone	14-37- 9	320
BUSH, Anton	Goldstone	5-37- 9	510
BUSCH, Bert	Trommer	25-34- 4	337
BUNTON, Frank	Simpson	25-37-11	414
BUNTON, R. G.	Simpson	10-37-11	20
BURKHARTSMEYER, G.	Goldstone	29-37-10	370
BURKE, J. M.	Alma	22-37- 7	460
BUSTA, Mary F.	Hingham	31-32-10	460
BURNS, Mary	Hingham	31-31-10	65
BURKHARTSMEYER, John	Hingham	32-33-10	65
BUDGE, John	Hingham	25-32- 9	105
BUSTA, John	Hingham	31-32-10	480
BUSTA, Chas.	Hingham	29-32-10	365
BYRON, W. L.	Hingham	31-32-11	330
BYER, Henry	Chester	11-32- 5	475

To Be Continued--

QUERIES???????

AUERY: Searching for information about William John Regan. B-Feb. 14, 1877 in Seattle, Washington, (King County). d. Sept. 6, 1936 in Butte, Montana. m. Clara Wiegstein in Granite early 1900-1905. Submitted by Pat Lugwig (granddaughter) Box 554, Chester, Mt. 59522.

SNOW

VANNESS Need information about the parents of Levi and Jane Vanness Snow. They were listed in the 1850 Census for Nobel Township Indiana. They had a son, Arthur Millard Snow, Born Jan. 19, 1859, in Kendellville, Indiana.

MILLSAPS: I am searching for info about Martha Millsaps, who was married to Arthur Millard Snow. They had a daughter, Dawn Margaret, born Dec. 2, 1881. We believe that they lived in the Little Rock, Ark...Alice Shepherd, Box 326, Chester, Mt. 59522

Name of Compiler Betty Marshall

FOUR GENERATION ANCESTOR CHART 65

Address Box #476 205 3rd St. E. Person No. 1 on this chart is the same person as No. _____ on chart No. _____.

Chart No. 1

City, State Chester, Mt. 59522

Date April 5, 1984

Form A24-Copyright by The Everton Publishers, Inc., P.O. Box 508, Logan, Utah 84321, publishers of THE GENEALOGICAL HELPER. Send for a free catalogue with lists and full descriptions of many genealogical aids.

b. Date of Birth
p.b. Place of Birth
m. Date of Marriage
p.m. Place of Marriage
d. Date of Death
p.d. Place of Death

4 BECKNER, Nicholas
b. 6 Oct. 1806 (Father of No. 2)
p.b. Fincastle, Virg.
m. 8 Sept. 1842
p.m.
d. 1879
p.d. Round Creek, Brock Co., Ky.

2 BECKNER, Jacob (Jake)
b. (C) 1845 (Father of No. 1)
p.b. Hawkins Co. Tenn.
m. 23 Oct. 1864
p.m. Hawkins Co. Tenn.
d. Aug. 1889
p.d. Rankins, Tenn.

5 WALKER, Millie
b. (c) 1825 (Mother of No. 2)
p.b. ?Tenn. or N.C.
d.
p.d.

1 BECKNER, Mary Elizabeth
b. 4 July 1868
p.b. Hawkins Co. Tenn.
m. 1884
p.m. Tenn.
d. 4 April 1946
p.d. Rockport, Mo.

6
b. (Father of No. 3)
p.b.
m.
p.m.
d.
p.d.

3 CAMPBELL, Catherine
b. (c) 1842 (Mother of No. 1)
p.b. Tenn.
d. (c) 1887
p.d. Tenn.

7
b. (Mother of No. 3)
p.b.
d.
p.d.

WOOD, John William
b. 18 Jan. 1861 (Spouse of No. 1)
p.b. Stokes Co. N.C.
d. 26 Feb. 1944
p.d. Haute, Hill Co. Mt.

8 BECKNER, Jacob
b. (a) 1782-85 (Father of No. 4)
p.b. Cont. on chart No. _____
m. 23 Dec. 1805
p.m. Botetourt Co. Va.
d. after 1850
p.d. Hawkins Co. Tenn.

9 KIRFMAN, Katherine
b. (c) 1789 (Mother of No. 4)
p.b. Cont. on chart No. _____
d.
p.d.

10
b. (Father of No. 5)
p.b. Cont. on chart No. _____
m.
p.m.
d.
p.d.

11
b. (Mother of No. 5)
p.b. Cont. on chart No. _____
d.
p.d.

12
b. (Father of No. 6)
p.b. Cont. on chart No. _____
m.
p.m.
d.
p.d.

13
b. (Mother of No. 6)
p.b. Cont. on chart No. _____
d.
p.d.

14
b. (Father of No. 7)
p.b. Cont. on chart No. _____
m.
p.m.
d.
p.d.

15
b. (Mother of No. 7)
p.b. Cont. on chart No. _____
d.
p.d.

Name of Compiler Betty Marshall

FOUR GENERATION ANCESTOR CHART 66

Address Box # 476

Person No. 1 on this chart is the same person as No. 8 on chart No. .

City, State Chester, Mont. 59522

Chart No. 2

Date April 4, 1984

8 BECKNER, Nicholas Sr.

b. (Father of No. 4. Cont. on chart No.)

p.b.

m.

p.m.

d.

p.d.

9

b. (Mother of No. 4. Cont. on chart No.)

p.b.

d.

p.d.

4 BECKNER, Nicholas Jr.

b. (c) 1725 (Father of No. 2)

p.b. Germany

m.

p.m.

d. 1813

p.d. Botetourt Co. Va.

2 BECKNER, Abraham

b. before 1760 (Father of No. 1)

p.b. Penn.

m.

p.m.

d. Nov. 1806

p.d.

10

b. (Father of No. 5. Cont. on chart No.)

p.b.

m.

p.m.

d.

p.d.

5 Anna

b. (Mother of No. 2)

p.b.

d.

p.d.

11

b. (Mother of No. 5. Cont. on chart No.)

p.b.

d.

p.d.

1 BECKNER, Jacob

b. (c) 1782-1785

p.b. Penn.

m. 23 Dec. 1805

p.m. Boutetourt Co. Va.

d. after 1850

p.d. Hawkins, Tenn.

12

b. (Father of No. 6. Cont. on chart No.)

p.b.

m.

p.m.

d.

p.d.

6 (Father of No. 3)

b.

p.b.

m.

p.m.

d.

p.d.

13

b. (Mother of No. 6. Cont. on chart No.)

p.b.

d.

p.d.

3 Christena

b. (Mother of No. 1)

p.b.

d.

p.d.

14

b. (Father of No. 7. Cont. on chart No.)

p.b.

m.

p.m.

d.

p.d.

7 (Mother of No. 3)

b.

p.b.

p.d.

KIRFMAN(CORFMAN), Katherine

b. (c) 1789 Spouse of No. 1.

p.b.

d.

p.d.

15

b. (Mother of No. 7. Cont. on chart No.)

p.b.

d.

p.d.

Form A24. Copyright by The Everton Publishers, Inc., P.O. Box 506, Logan, Utah 84321, publishers of THE GENEALOGICAL HELPER. Send for a free catalogue with lists and full descriptions of many genealogical aids.

b. Date of Birth
p.b. Place of Birth
m. Date of Marriage
p.m. Place of Marriage
d. Date of Death
p.d. Place of Death

Name of Compiler Alice M. Shepherd

FOUR GENERATION ANCESTOR CHART 67

Address Box 326

Person No. 1 on this chart is the same person as No. _____ on chart No. _____

City, State Chester, Montana

Chart No. 1

Date _____

Form A24. Copyright by The Everton Publishers, Inc., P.O. Box 506, Logan, Utah 84321, publishers of THE GENEALOGICAL HELPER. Send for a free catalogue with lists and full descriptions of many genealogical aids.

b. Date of Birth
p.b. Place of Birth
m. Date of Marriage
p.m. Place of Marriage
d. Date of Death
p.d. Place of Death

4 George Nathan Shepherd

b. Oct. 16, 1866 (Father of No. 2)
p.b. Bentonsport, Iowa
m. Oct. 9, 1889
p.m. Leosauqua, Iowa
d. Sept. 12, 1946
p.d. Havre, Montana

2 Glen Stanley Shepherd

b. March 26, 1892 (Father of No. 1)
p.b. Bentonsport, Iowa
m. July 3, 1913
p.m. Chester, Montana
d. Nov. 24, 1981
p.d. Kalispell, Montana

5 Addie Barbara Bell

b. May 11, 1870 (Mother of No. 2)
p.b. Keosauqua, Iowa
d. March 19, 1960
p.d. Chester, Montana

1 Neil Shepherd

b. June 11, 1923
p.b. Chester, Montana
m. Oct. 26, 1946
p.m. Missoula, Montana
d.
p.d.

6 William Mitchell

b. 1862 (Father of No. 3)
p.b.
m.
p.m.
d. 1929
p.d.

3 Lottie Mitchell

b. Sept. 27, 1893 (Mother of No. 1)
p.b. Ft. Benton, Montana
d. Dec. 6, 1945
p.d. Havre, Montana

7 Martha Ann Coleman

b. 1864 (Mother of No. 3)
p.b.
d. 1952
p.d. California

Alice Marie Nelson

b. Oct. 27, 1925 Spouse of No. 1.
p.b. Missoula, Montana
d.
p.d.

8 Henry Clay Shepherd

b. March 7, 1839 (Father of No. 4)
p.b. St. Louis, Missouri Cont. on chart No. _____
m. Sept. 17, 1863
p.m. Van Buren County, Iowa
d. May 12, 1922
p.d. Bentonsport, Iowa

9 Hannah Stull

b. Sept. 7, 1846 (Mother of No. 4)
p.b. Cont. on chart No. _____
d. June 1, 1927
p.d.

10 John R. Bell

b. Nov. 14, 1836 (Father of No. 5)
p.b. Hancock Co., Ill. Cont. on chart No. _____
m. 1859
p.m.
d. Oct. 15, 1908
p.d. Keosauqua, Iowa

11 Sarah A. Bridell

b. (Mother of No. 5)
p.b. Cont. on chart No. _____
d. March 11, 1871
p.d.

12 John Mitchell

b. Sept. 22, 1831 (Father of No. 6)
p.b. Cont. on chart No. _____
m. Jan. 19, 1860
p.m.
d. 1917
p.d.

13 Catherine McEwen

b. July 14, 1840 (Mother of No. 6)
p.b. Cont. on chart No. _____
d. 1919
p.d.

14

b. (Father of No. 7)
p.b. Cont. on chart No. _____
m.
p.m.
d.
p.d.

15

b. (Mother of No. 7)
p.b. Cont. on chart No. _____
d.
p.d.

Name of Compiler Alice M. Shepherd

FOUR GENERATION ANCESTOR CHART 68

Address Box 326

Person No. 1 on this chart is the same person as No. 8 on chart No. 1.

Chart No. 2

City, State Chester, Montana 59522

Date _____

Form A24. Copyright by The Everton Publishers, Inc., P.O. Box 306, Logan, Utah 84321. Publishers of THE GENEALOGICAL HELPER. Send for a free catalogue with lists and full descriptions of many genealogical aids.

b. Date of Birth
p.b. Place of Birth
m. Date of Marriage
p.m. Place of Marriage
d. Date of Death
p.d. Place of Death

4 William Shepherd
(Father of No. 2)
b. _____
p.b. _____
m. _____
p.m. _____
d. April 1, 1856
p.d. _____

2 Dr. Nathan Shepherd
(Father of No. 1)
b. June 2, 1806
p.b. Mt. Pleasant, Iowa
m. March 11, 1830
p.m. Cynthiana, Kentucky
d. March 31, 1889
p.d. near Bentonsport Iowa

5 Catherine Rippeth
(Mother of No. 2)
b. Jan. 11, 1780
p.b. _____
d. Sept. 7, 1843
p.d. _____

1 Henry Clay Shepherd
b. March 7, 1839
p.b. St. Louis, Missouri
m. Sept. 17, 1863
p.m. Keosauqua, Iowa
d. May 12, 1922
p.d. Bentonsport, Iowa

6 William Stewart
(Father of No. 3)
b. Oct. 28, 1765
p.b. Westmoreland Co. Virginia
m. May 17, 1796
p.m. Harrison Co. Ky.
d. Oct. 9, 1853
p.d. Bentonsport, Iowa

3 Zerina Stewart
(Mother of No. 1)
b. Nov. 30, 1810
p.b. _____
d. March 4, 1887
p.d. _____

7 Malinda Price
(Mother of No. 3)
b. April 11, 1775
p.b. _____
d. Jan. 15, 1847
p.d. Bank Lick Creek, Ky.

Hannah Stull
(House of No. 1)
b. Sept. 7, 1847
p.b. _____
d. June 1, 1927
p.d. _____

8 Dr. Nathan Shepherd
(Father of No. 4)
Cont. on chart No. _____

b. _____
p.b. _____
m. _____
p.m. _____
d. 1849
p.d. Marshall Co., Virginia

9 Elizabeth Chapman
(Mother of No. 4)
Cont. on chart No. _____
b. _____
p.b. _____
d. _____
p.d. _____

10 William Rippeth
(Father of No. 5)
Cont. on chart No. _____
b. 1749
p.b. _____
m. _____
p.m. _____
d. Aug. 19, 1843
p.d. Leesville, Ohio

11 Sarah Ross
(Mother of No. 5)
Cont. on chart No. _____
b. _____
p.b. _____
d. 1844, Leesville, Ohio
p.d. _____

12 William Stewart
(Father of No. 6)
Cont. on chart No. _____
b. _____
p.b. _____
m. _____
p.m. _____
d. _____
p.d. _____

13 Susan
(Mother of No. 6)
Cont. on chart No. _____
b. _____
p.b. _____
d. _____
p.d. _____

14 Christopher Price
(Father of No. 7)
Cont. on chart No. _____
b. 1750
p.b. _____
m. _____
p.m. _____
d. 1833
p.d. _____

15 Mary Hatfield
(Mother of No. 7)
Cont. on chart No. _____
b. _____
p.b. _____
d. _____
p.d. _____

Address Box 326Person No. 1 on this chart is the same
person as No. _____ on chart No. _____.

Chart No. _____

City, State Chester, Montana

Date _____

8 Lars Svensonb. April 15, 1802 (Father of No. 4.
Cont. on chart No. _____)

p.b. Varmland, Sweden

m.

p.m.

d. Feb. 24, 1874

p.d. Varmland, Sweden

4 Nils Larsson

b. June 29, 1844 (Father of No. 2)

p.b. Varmland, Sweden

m. Dec. 20, 1870

p.m.

d. Jan. 1906

p.d. Jamtland, Sweden

9 Kjerstin Ersdatterb. Jan. 1, 1810 (Mother of No. 4.
Cont. on chart No. _____)

p.b. Varmland, Sweden

d. Jan. 15, 1859

p.d. Varmland, Sweden

b. Date of Birth
p.b. Place of Birth
m. Date of Marriage
p.m. Place of Marriage
d. Date of Death
p.d. Place of Death2 Nels Otto Nelson

b. Jan. 29, 1896 (Father of No. 1)

p.b. Jantland, Sweden

m. March 4, 1922

p.m. Butte, Montana

d. Dec. 20, 1962

p.d. Missoula, Montana

10 Nils Jonssonb. April 18, 1829 (Father of No. 5.
Cont. on chart No. _____)

p.b. Jamtland, Sweden

m. Sept. 30, 1860

p.m.

d. May 13, 1874

p.d. Jantland, Sweden

5 Koren Nilsdatter

b. Nov. 14, 1860 (Mother of No. 2)

p.b. Jantland, Sweden

d. Nov. 29, 1919

p.d. Jantland, Sweden

11 Ingeborg Andersdotterb. Jan. 1, 1836 (Mother of No. 5.
Cont. on chart No. _____)

p.b. Jamtland, Sweden

d.

p.d.

1 Alice Marie Nelson

b. Oct. 27, 1925

p.b. Missoula, Montana

m. Oct. 26, 1946

p.m. Missoula, Montana

d.

p.d.

12 Timothy Monteliusb. July 12, 1818 (Father of No. 6.
Cont. on chart No. _____)

p.b. Reamstown, Pa.

m.

p.m. Richmond, Virginia

d. Dec. 27, 1893

p.d. Colorado

6 William F. Montelius

b. June 17, 1860 (Father of No. 3)

p.b. Pennsylvania

m. Feb. 27, 1897

p.m. Wallace, Idaho

d. Dec. 27, 1931

p.d. Missoula, Montana

13b. (Mother of No. 6.
Cont. on chart No. _____)

p.b.

d.

p.d.

3 Esther Martha Montelius

b. Jan. 21, 1905 (Mother of No. 1)

p.b. Missoula, Montana

d. Nov. 23, 1979

p.d. Missoula, Montana

14 Arthur Millard Snowb. Jan. 19, 1859 (Father of No. 7.
Cont. on chart No. _____)

p.b. Kendallville, Indiana

m.

p.m.

d. March 2, 1941

p.d. Rogue River, Oregon

7 Dawn Margaret Snow

b. Dec. 2, 1881 (Mother of No. 3)

p.b.

d. Feb. 22, 1931

p.d. Libby, Montana

15 Martha Millsapsb. (Mother of No. 7.
Cont. on chart No. _____)

p.b.

d.

p.d.

Neil Shepherd

Spouse of No. 1

b. June 11, 1923

p.b. Chester, Montana

d.

p.d.

NAME	RESIDENCE	TIME	ROOM	REMARKS
Monday Oct. 25, 1909				
D. G. Afferbaugh	Kalispell, Mont.	L	C	Paid
W. H. Dillenber	" "	L	C	"
8 O. J. Hansen	Sherwood, N. D.	L	B	"
8 Tom McDonald	" "	L	B	"
8 Lewis Anderson	" "	L	C	"
Brownes ? Streuis ?	Fergus Falls, Minn.		C	"
J. W. Adams	Curtis, Neb.		2	"
E. P. Uss?er??l	Curtis, Neb.			"
Geo. Richwood ?	" "			"

St. Paul

Alma Smith Nanton

October 26

Alma Smith	Nanton, Alta	B	² 1	Paid
Isla Thompson	Plains, Montana	B	²	"
Charley A. Smith		B	³	"
John D. Smith		B	²	"
O. or A. Golberg	Enderlin, N. D.		C ⁶	"
I. A. Haskins & Wife	Nanton, Alta	S	7	"
Louis Teel			C	"
M. Trill			C	"
T. D. Williams	Galata		C	"
Charles Frabont	Irby, Wash.		4	"

Wednesday Oct 27, 1909

J. J. Moede St. Paul B "

Clarence Langley City

J. T. Crime	Wis.	S		"
Mr & Mrs. Fradet		S	1 ^{2.40}	"
Miss Della Young		B	2	"
Abr. Kassis		B	B	"
John Shicany		B	B	"
Chas. Kassis		B	B	"
A. G. Kassis		C	B	"

Emil J. Jeppesen

Loyd Rogers C "

Thursday Oct. 28, 1909

Mr. & Mrs. Geo. W. LaValley	Rogers, N. Dak.	B	P	Pd
Mr. & Mrs. A. B. Anderson	Dazey, N. Dak.	B	P	"
S?ire Week	Duluth, Minn.	B	9	"
D. W. Belt	Spokane	B		Pd

NAME	RESIDENCE	TIME	ROOM	REMARKS
D. F. Stanley	Great Falls, Mont.	B		Paid
W. O. Midbon	Elbow Lake, Minn.	B	C	"
Clarence Langley	City	S	1	"
Moz Silverman	Helena		B	"
Geo. B. Crater	Duluth	B		"
C. W. Montgomery & Wife	Chester	S	2	"
Geo. Walden	Stavely, Alta	S	C	"
Thomas B. Row	Chester	S	C	"
Roy Walden	Chester	S	B	"
W. B. Walden & Wife	Canada	B	7	"
T. Sauby & Wife	Canada	B	7	"
C. Casement ?			C	"

Mrs G P Strode Whitlash Mont
Annie Strode

Geo. Brack

Friday Oct. 29, 1909

W. B. Wallace	Greybull, Wyo.	B	P	Paid
J. L. Hatfield	Culbertson			"
<i>David Reid</i>	<i>Chester</i>		<i>3C</i>	
H. L. Short	Havre	L	3C	"
M. L. Freng	Great Falls	L	3C	"

Saturday Oct 30, 1909

G. H. Earl		B	✓	Pd
M. H. Ness		B	✓	"
E. J. Blanchard	Coeur D'Alene	S	3C	"
H. J. Blanchard	Post Falls	S	3C	"
Jos. Martin	" "	S	3C	"
Harry Fields	Stavely	B	P	"
Eugene Diemert	Stavely	B	P	"
Harold Eggen	LaCrosse, Wis.	B	✓	"
Gust Sundgourden ?	" "	B	✓	"
Paul Johnson	" "	B	✓	"
Armand Paulson	" "	B	✓	"

S O Carp Stavely Alta

K. Hamilton, M.D.	Malta, Mont.	S	BB	"
Miss Ella Seahr	Missoula, Mont.	L	9	"
T. Williams	Galata, Mont.	L	BC	"
E. McMahan		L	P	"
Mrs. W. G. Pitzer	Nanton	L	7/1	"

NAME	RESIDENCE	TIME	ROOM	REMARKS
Sunday Octo 31st, 1909				
R. C. Brusnahan	City	B	✓	Paid
<i>Geo Walden</i>	<i>City</i>	B	P	"
F. O. Earp & Wife	"	B	B	"
Thomas B. Row		B	3	"
D. W. Browne	City	B		
H. C. Smith	Soo City, Iowa	B	9	"
<i>Rev Kellborn</i>	<i>City</i>	B		
<i>A Nordstrom</i>	<i>"</i>	S	P	"
W. Mitchell	Havre	S	P	"
J. T. Pritzin & son	Nanton	L	BC	"
T. D. Williams	Galata, Mont.	L	3d	"
Gunerius ?	Yae ???	L	"	"
A. Dahl	Kalispell	L	"	"
S. McClaran	Mpls	L	"	" 25
J. A. Lincoln	Shelby	L	"	"
Jno. Brinkman		S	BB	"
W. G. Pitzer	Nanton	S	1	Pd 10/2

Monday Nov 1st, 1909

Ray Brusnahan	City	L	C	
McMahan		L	P	Pd
Geo. Walden <i>Reg</i>		S	BC	
J. A. Lincoln <i>Reg</i>		D	3c	
Rev. W. J. Gordon	Kalispell	S	B	"
Miss Stahr	Missoula	S	7	"
T. D. Williams	Galata, Mont.	S	P	"
Berger Johnson <i>Reg</i>	Nanton, Alta	L	3B	Paid
F. H. Clare	Choteau	S	P	Pd
Jacob Beaken		L	3B	
H. F. Yeosh ?		L	3B	
Jacob Hardt, Jr.		L	3C	
L. Emerson	Spokane, Wash.	L	BC	

Al Merrifield *Benton*

Tuesday Nov. 2nd, 1909

Joe Connelly	Augslup	D	P	Paid
J. R. Buckley	S. F.	S	7	"
H. E. Moody	Concord	S	P	"
R. B. Hamilton	Botteneau, N. D.	B	P	"

Ray Brusnahan *City*

NAME	RESIDENCE	TIME	ROOM	REMARKS
Frank N. Lowe	Whitlash	S	✓	Paid
T. O. Johnson	Whitlash, Mont.	L	B	"
C. Hermanson		L	C	"
G. G. Signor	St. Paul	L		

Wednesday Nov 3

John Barta & Wife	Chinook	B	✓	Pd
Wilber W. Flint	Claresholm	B	✓	"
A. D. Flint	"	B	✓	"
C. P. Megquis ?	Denver, Colo.	L	3B	"
T. D. Williams	Galata	L	3B	"
Robt Seegen and Wife & son	Reubens, Ida	L	7	"
	"	L	7	"
A. T. Ross		L	3B	"
E. R. Stalay		L	3B	"
W. A. Hagen	Helena	L	3c	"
J. H. Schlack & Wife	Post Falls, Ida	S	2B	"
Mrs. Anna Johnson	" "	S	2B	"
Jack Ness	" "	S	3B	"
F. Henry	Hill	L	3B	"
H. D. Haverson	Havre	B	3B	"
W. E. Fitzsimons	Havre	B	3B	"
H. C. Haywood	Havre	B	3B	"

Thursday Nov 4, 1909

W. J. Roney	Billings	B	✓	"
Wilber M. Flint	Claresholm, Alta	B		✓
D. W. Browne	City	B		
Andy Flint	Claresholm, Alta	B		✓
G. G. Wilcox	St. Paul	B	7	Paid
G. F. Elstone	"	B	3B	"
Harry E. Teed	Gold Butte	L	3C	✓
Andy Flint		S		
Jacob Hardt Jr.		S	3B	"
Henry Cock or Cook		S	3B	✓
Wilber W. Flint				
N. J. Ferguson	Millaukee	L	P	"
Fred Hamilton & Wife	Spokane	L	9	"

Louie Dargent Alma, Mont.

Mrs. Jno Keish ?	Alma, Mont	S	4	"
Mrs. Tom Keish	" "	S	4	"
Miss Belinda	" "	S	4	"
Gallsway	City	S	5	"
Jas. Reid	Gt Falls	L	3C	"
C. E. Wells	Glasgow			

NAME	RESIDENCE	TIME	ROOM	REMARKS
Friday Nov 5, 1909				
Jno. Kindschy	Inverness, Mont.	S	✓	Pd
F. Mulls or Mills	" "	S	✓	"
Jacob Hardt Jr.				
Henry Cock or Cook				
Jacob Becker				
O. J. Hansen & Wife	Sherwood, N. D.	L	4	"
Mrs. H. Anderson	" "	L	7	"
Estes Coskrey ?	" "	L	7	"
S. M. Sorenson	Minot	L	2B	"
Ott Anderson	Sherwood	L	2B	"
H. Spaulding	"	L	2B	"
<i>Fred Russell</i>	<i>Chicago</i>	L	9	"
Joe Lampher	Arcola, Saschas.	L	P	Paid <i>28</i>
C. A. Johnson	Minot, N. D.	L	P	Pd
Geo. Nelson	" "	L	3B	Paid
Jas. Leonard	Madison, Wis.	L	3B	Pd
Saturday, Nov 6, 1909				
H. J. Stevens	Duluth	S	2	Paid
Paul DeNurry ?	Palco, Kans.	S	3B	"
Alfred Stinsen	" "	S	3B	"
C. E. Davis	Whitefish	S	1	"
H. O. Warehom	Calgary, Alta	S	4	"
Mrs. Ellis	Provost, Alta	L	9	"
Fred Sachrison		L	P	"
Peter McSweeny ?		L	P	"
T. D. Williams	Galata, Mont.	L	2B	"
Fred Altman	Odessa	L	7	"
Wm Schroer	Kalispell	L	2B	"
Frank Schroer	"	L	2B	"
<i>Frank Holloway</i>				<i>Paid</i>
Sunday Nov 7th, 1909				
J. W. Hamblock	Sterling, Ills.	B		Pd
H. J. Flock	Spring Coulee, Alta	B		"
Peter McSweeny		L	3B	"
Fred Sackerson		L		
E. G. Allen	Mpls	S	1	"
C. J. Burkhardt	Butte	S	1	Paid
<i>Judge Foley Helena</i>		S	2	"
Jno. F. Steele	St. Louis	S	9	"
C. B. Richards	Kalispell, Mont.	L	P	"

NAME	RESIDENCE	TIME	ROOM	REMARKS
C. B. Roberts	Kalispell, Mont.	L	P	Pd
J. Hewins ?	Odessa	L	P	"

Monday Nov 8th

G. Gazez ?	Bozeman	S	2B	Paid
A. A. Bradley	Eureka, Mont.	S	1	"
W. A. Sterrett	Havre, Mont.	S	2	"
Geo. Cuiney ?	" "	S	2	"
Fred Sachrison		L	3B	"
Peter McSweeney	Stavely	L	3B	"
W. L. Brooks	Lethbridge	L	P	"
A. Bemenuts ?	Butte	L	1P	"
D. K. Matelum	Post Falls, Idaho	L	P	"
Saf Grethom	Stavely, Alta	L	3c	"
John Mayer	Ilo, Idaho	S	BC	"
M. M. Langmire	Moscow, Ida	S	BC	"
A. D. Stipp	Moscow, Ida	S	BC	"
Mrs. H. N. Clingan	Lewistown, Mont.	L	9	"
H. Clingan	Great Falls			

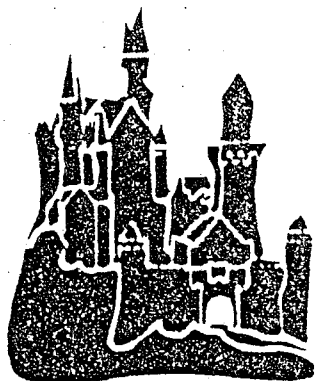
Tuesday Nov 9, 1909

T. M. Golberg	Havre, Mont.	B		"	
B. F. Eberhard		L	1	"	
P. J. Becker	Whitlash, Mont.	L	1	"	
T. M. Saubey		L	9	"	
R. Albertson	Knot, N. Dak.	S	P	"	
John Mayer	Ilo, Idaho	S	BC	"	
J. T. Tasker	St. Paul	S	BB	"	
J. F. Harper	Stavely	}			
R. E. Walden	Stavely		S	3B	" DP
W. R. Turnbow	"		S	3B	"
James Muir			S	3B	"
<i>Andrew Muir</i>		S	3B	"	
S. Thompson	St. Joseph	L	P	" DP	
C. L. Curtis	Vollmer, Id	L	P	"	
John Slattery		L	3C	"	
M. M. Longmire	(Sniders)	L		" DP	

Wednesday Novr 10, 1909

D. P. Brown & Wife	Spokane	BL	1	"
W. T. Fitzpatrick	Helena	B		"
J. F. Harper	Stavely	L		"
A. J. Brutzman	Seattle	S	9	"
J. F. Chase	Nanton	L	30	" Paid DP Paid DP aas 1/2
Jn. F. Davis ?	Polson, Mont.	L	P	"
G. M. Hunt	Kalispell	L	16	"
T. D. Williams	Galata, Mont.	L	P	" DP

GENEALOGICAL TOURS
GERMANY, SWITZERLAND & AUSTRIA
Summer 1985



Pennsylvania German Research and Travellers International Tour Operators, Inc. are again offering escorted genealogical tours to the homeland of your ancestors.

Tour Austria, Germany, and Switzerland by luxury, air-conditioned, private motorcoach. Visit archives of interest, research church records, and attend cultural and historical programs planned for you. Day-trips and sightseeing will be provided for the non-researcher.

Features include:

- Round trip, economy class transatlantic TWA flight.
- Land transportation by luxury, air-conditioned private motorcoach.
- All hotel accommodations, incl. private bath.
- Continental breakfast daily, and most dinners
- Baggage handling at airports and hotels.
- Full time services of an Experienced Tour Director.
- Professional Genealogist on hand to assist you with research.
- Advance arrangements for research in Speyer, Kaiserslautern, Karlsruhe, Lucerne, Geneva, Vienna, Munich, and more.
- Preliminary genealogical research both here and abroad on each individual's family history.

For further information, write:

Carolyn B. Dryfoos
Pennsylvania German Research
R.D.
Sugarloaf, PA 18249